

MONROE COUNTY - U.S. PUBLIC LAND SURVEY MONUMENT RECORD

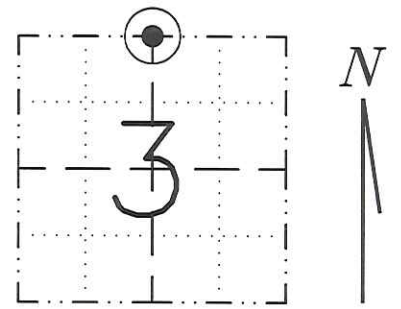
TYPE OF MONUMENT: Harrison Cast Iron Monument
 REFERENCED FOR SURVEY RECORDED IN CSM# _____ OR CSR# _____
 SURVEYOR'S FILE# OR PROJECT# HSE File 15072
 DRAWN BY: NRH
 WITNESS: _____

CORNER VOL. _____, PAGE _____
 CORNER# 6 22004340020
 SECTION 3, T 19 N, R 4W

GEOGRAPHIC LOCATION:

LATT: _____
 LONG: _____
 ELLIPSOID HEIGHT _____ m _____ ft.
 ORTHO HEIGHT _____ m _____ ft.
 Estimated height accuracy \pm _____ ft.

NAD 83 (91)
 WISCRS - MONROE COUNTY
 COUNTY COORDINATE SYSTEM
 (TO BE ASSIGNED BY COUNTY)
 N = 457852.6270
 E = 618260.7912



LOCATION
 (INDICATE W/ MONUMENT SYMBOL)

BASIS FOR MONUMENT LOCATION

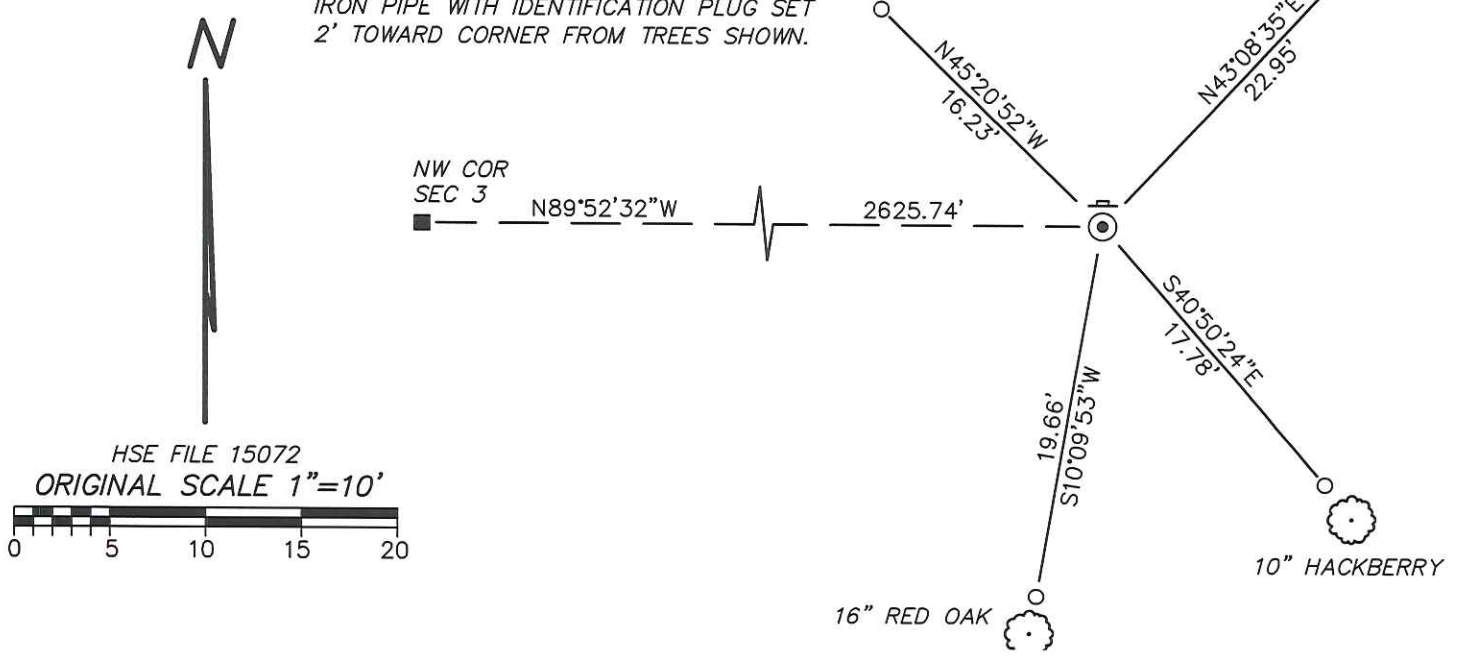
Please describe if this is a found, obliterated or lost corner. Give a complete history of the corner listing the vol. & page, dates, surveyor and description of found monument. Please list all parole testimony and who provided it as well as other witness' of recovery. Please describe the best way to reach this corner. Indicate how obstructed this monument might be for GPS observations. Continue on backside if necessary.

C.M. Keach, in Jackson County Survey Record (CSR) 527, Volume 2, Page 272, dated 1906, found both original bearing trees and set a stone 28 x 14 x 3-1/2 at the corner. In 1949, David A. Blencoe used this corner for a survey in Sec. 3, T19N, R4W. Harley A. Sime used this corner in 1973 (survey may not be recorded) and in 1986, Bryan H. Meyer filed a Monroe County tie sheet on the corner. He cut a cross in the top of the stone and set a Harrison monument 0.73 foot east as a witness. I found the stone broken. I believe it broke along the east-west part of BHM's cross. I used a point on the break 0.73 foot west of the Harrison as the corner. I referenced this point, then removed the Harrison. The stone broke about halfway down when I tried to move it. I reset the Harrison at the point I had referenced and laid the broken pieces of the stone on the east side of the Harrison. I set a Jackson County witness post and sign 1.0 foot north of the corner. At this time, the corner is open for GPS observations due to recent clear cutting to the north, but new growth will soon obstruct it.

CERTIFIED CORRECT AND COMPLETE
 TO THE BEST OF MY KNOWLEDGE
 AND BELIEF:
Norman Ray Hurlburt
 Registered Land Surveyor
 DATE: 2/5/16

TIE SKETCH

ALL REFERENCES ARE 1-1/4" OD X 24" IRON PIPE WITH IDENTIFICATION PLUG SET 2' TOWARD CORNER FROM TREES SHOWN.



I, Bryan H. Meyer, do hereby certify that on the 26th day of September 19 86, I found (evidence) ~~(no evidence)~~ of the North 1/4 corner of Section 3, T. 19 N, R. 4 W Fourth Principal Meridian, and I re-established said corner according to the Wisconsin Statutes as shown and described hereon.

Dated this 15th day of Dec. 1986.

Bryan H. Meyer
Deputy County Surveyor
Title

History of corner establishment since Original Government Survey

C. M. Keach was here at some point during the early 1900s (I believe 1906) and set a stone. David Blencoe was here in September and October of 1949 and found Keach's stone. H. A. Sime found Keach's stone in July of 1973.

Description of corner evidence found:

I found a 4"x10" sandstone up 4" and chiselled a cross in the top center. I accepted the top center of the stone as the corner.



COUNTY SURVEYOR FORM NO. 1

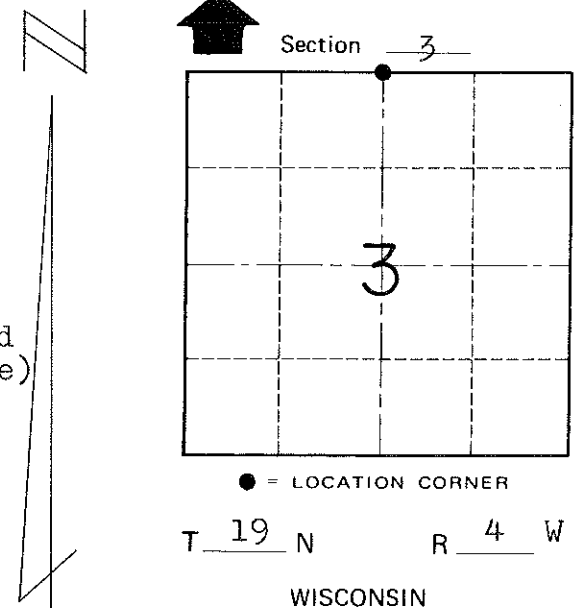
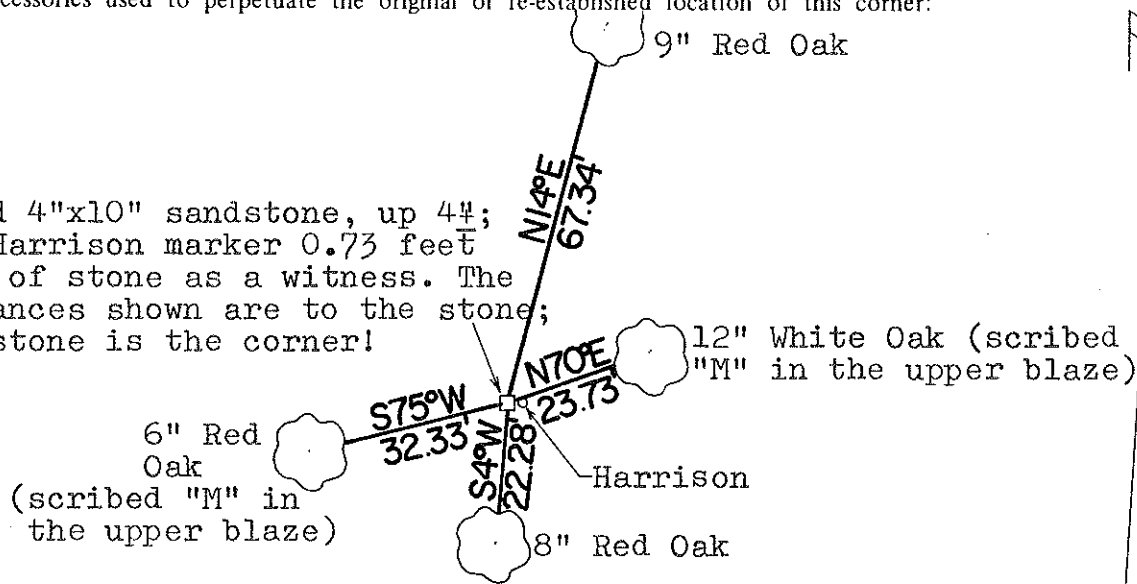
Description of corner and witness monuments, references and accessories used to perpetuate the original or re-established location of this corner:
Meyer, Kenworthy
September 26, 1986
Overcast, 70°+.

Witnesses to corner location:

Bryan Meyer

John "Rory" Kenworthy

Found 4"x10" sandstone, up 4";
Set Harrison marker 0.73 feet
East of stone as a witness. The
distances shown are to the stone;
The stone is the corner!



NOTE: The four trees shown are double blazed; each distance shown is to a nail set in a hack in the side of each tree. The bearings shown are magnetic hand compass bearings.

SURVEY CONTROL ORDER

Horizontal	_____
Vertical	_____

WISCONSIN COORDINATE SYSTEM

Corner	East (X)	North (Y)	Elevation (Z)	Zone
Control Sta. Name				

~~City, Village or~~ Town of Little Falls

County of Monroe