

CERTIFIED LAND CORNER

22004340000

CERTIFICATE

I, Harley A. Sime, do hereby certify that on the 14th day of November 19 80, I found (evidence) (~~no evidence~~) of the NE corner of Section 3, T 19 N, R 4 W Fourth Principal Meridian, and I re-established said corner according to the Wisconsin Statutes as shown and described hereon.

Dated this 20th day of Feb. 19 81.

Harley A. Sime, R.L.S. 355

County Surveyor

Title

History of corner establishment since Original Government Survey

Keach set a stone here in the early 1900's.
Blencoe found Keach's stone here in 1949.
H. Sime found this stone in June of 1973.

Description of corner evidence found:

Found Keach's stone as described in Blencoe's notes.
New ties were taken.

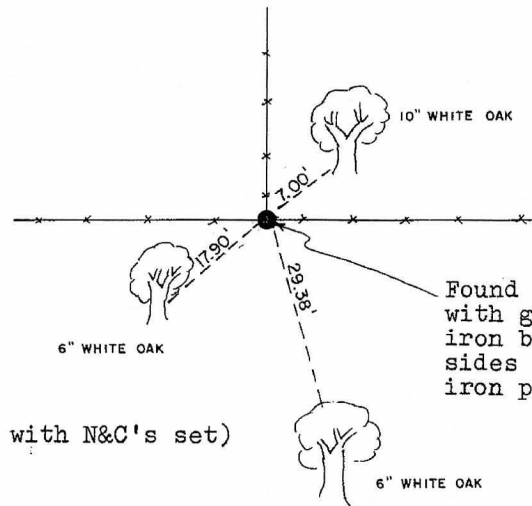
COUNTY SURVEYOR FORM NO. 1

Description of corner and witness monuments, references and accessories used to perpetuate the original or re-established location of this corner:
(All fences are in poor condition)

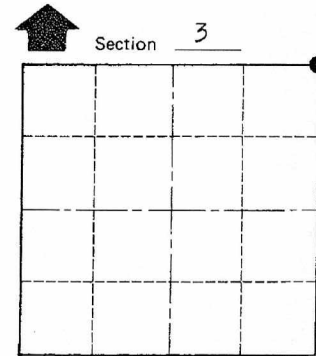
Witnesses to corner location:

G. Dechant

B. Meyer



Found stone flush with ground, set 3/4" iron bars on E and W sides of stone. Ex. iron pipe 1 1/2' to east.



T 19 N R 4 W

WISCONSIN

Approved: **HARLEY A. SIME**
MONROE CO. SURVEYOR

SURVEY CONTROL ORDER

(All trees double blazed with N&C's set)

Horizontal				
Vertical				
Corner	East (X)	North (Y)	Elevation (Z)	Zone
Control Sta. Name	91643.4504	47496.9909		

Jackson County ~~XXXXX~~ WISCONSIN COORDINATE SYSTEM NAD83(91)

City, Village or Town Little Falls

County of Monroe

22004340000

I, Harley A. Sime, do hereby certify that on the 14th day of November 1980, I found (evidence) (~~no evidence~~) of the NE corner of Section 3, T. 19 N, R. 4 W Fourth Principal Meridian, and I re-established said corner according to the Wisconsin Statutes as shown and described hereon.

Dated this 20th day of Feb. 1981.

Harley A. Sime, R.L.S. 355

County Surveyor
Title

History of corner establishment since Original Government Survey

Keach set a stone here in the early 1900's.
Blencoe found Keach's stone here in 1949.
H. Sime found this stone in June of 1973.

Description of corner evidence found:

Found Keach's stone as described in Blencoe's notes.
New ties were taken.

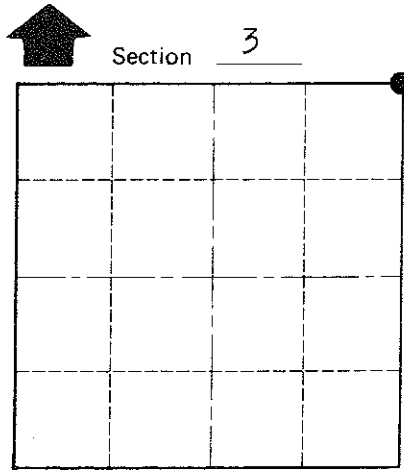
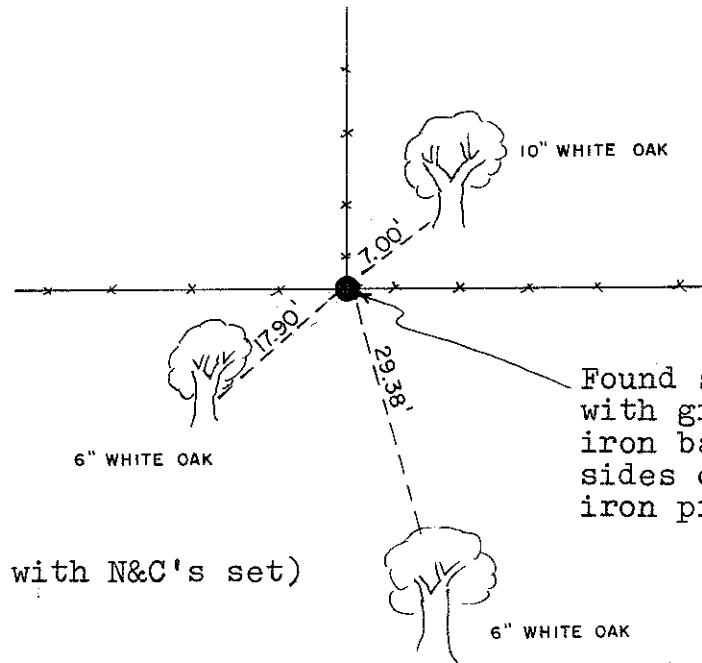
COUNTY SURVEYOR FORM NO. 1

Description of corner and witness monuments, references and accessories used to perpetuate the original or re-established location of this corner:
(All fences are in poor condition)

Witnesses to corner location:

G. Dechant

B. Meyer



• = LOCATION CORNER

T 19 N R 4 W

WISCONSIN

Approved: **HARLEY A. SIME**
MONROE CO. SURVEYOR

SURVEY CONTROL ORDER

(All trees double blazed with N&C's set)

Horizontal	_____
Vertical	_____

WISCONSIN COORDINATE SYSTEM

Corner	East (X)	North (Y)	Elevation (Z)	Zone
Control Sta. Name				

~~City, Village or Town~~ Little Falls

County of Monroe