

21904040020

I, Harley A. Sime, do hereby certify that on the 11th day of June 1981, I found ~~(evidence)~~ (no evidence) of the N¼ corner of Section 9, T 19 N, R 4W, Fourth Principal Meridian, and I re-established said corner according to the Wisconsin Statutes as shown and described hereon.

Dated this 27th day of August 1981.

Harley A. Sime, R.L.S. 355

County Surveyor

Approved: HARLEY A. SIME

MONROE CO. SURVEYOR

Description of corner and witness monuments, references and accessories used to perpetuate the original or re-established location of this corner:

History of original corner establishment:
Schroeder was here in May of 1886.

Description of corner evidence found:

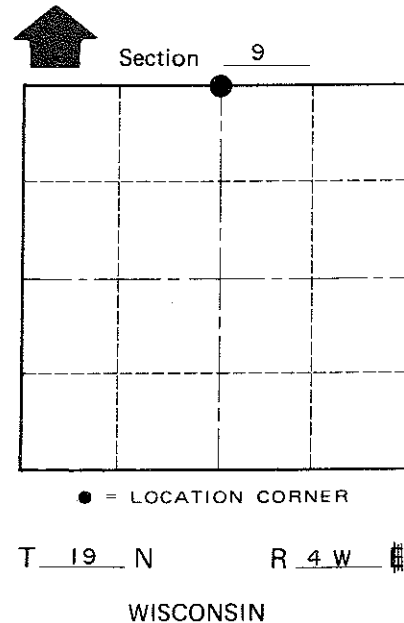
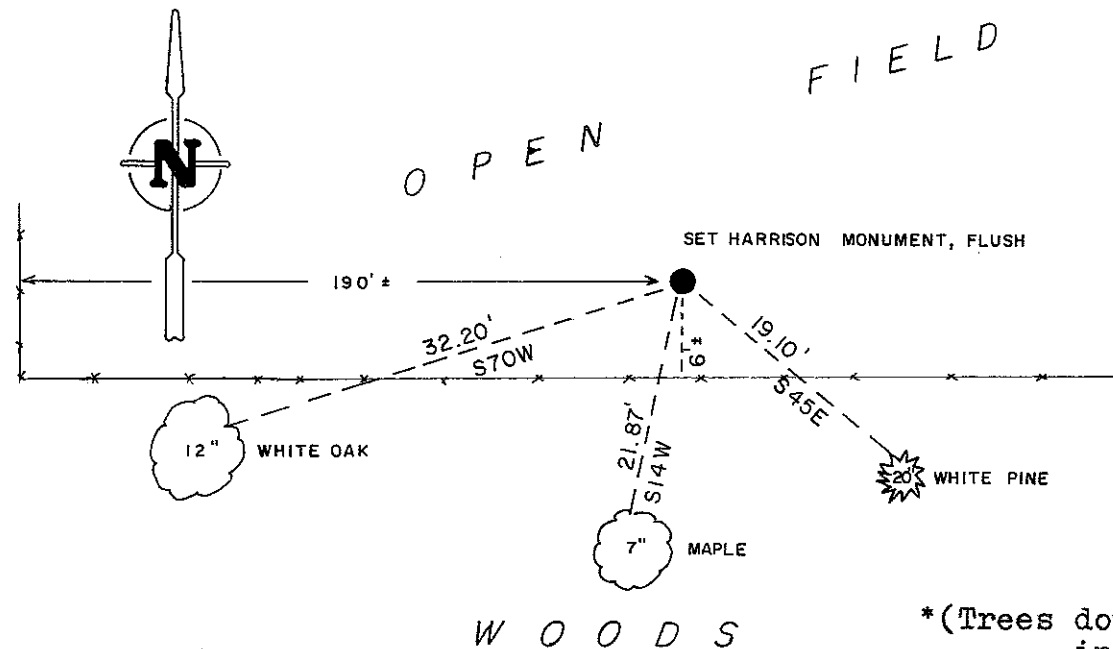
Projected a line from the S¼ corner through the CN 1/16 corner to a point on line from the Northeast corner of Sec.9, which is an existing monument, to a fence corner 190 feet west of this N¼ corner.

COUNTY SURVEYOR FORM NO. 1

Witnesses to corner location:

B. Meyer

C. Pietz



• = LOCATION CORNER

T 19 N R 4 W

WISCONSIN

(Trees double blazed with nail set in lower blaze)

SURVEY CONTROL ORDER

Horizontal	_____
Vertical	_____

WISCONSIN COORDINATE SYSTEM

Corner	East (X)	North (Y)	Elevation (Z)	Zone
Control Sta. Name				

~~City/Village~~ Town Little Falls

County of Monroe