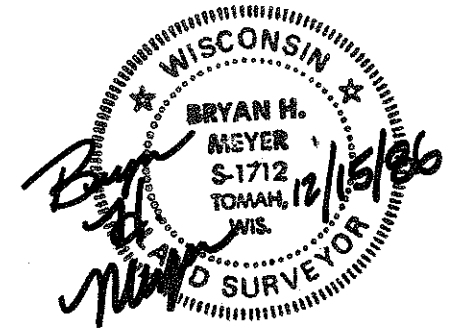


21904032000



I, Bryan H. Meyer, do hereby certify that on the 26<sup>th</sup> day of September 1986, I found (evidence) ~~no evidence~~ of the East 1/4 corner of Section 3, T 19 N, R 4 W Fourth Principal Meridian, and I re-established said corner according to the Wisconsin Statutes as shown and described hereon.

Dated this 15<sup>th</sup> day of Dec. 1986.

Bryan H. Meyer  
Deputy County Surveyor  
Title

History of corner establishment since Original Government Survey

C. M. Keach was probably here at some point during the early 1900s (I believe 1906). Fred Holden was here in October of 1909. David Blencoe was here in October of 1949 and set a large sandstone. H.A. Sime used this stone in his July, 1973 survey. Description of corner evidence found:

I found a 10"x22" sandstone, up 12" between two large posts. Said stone has a large cross on top. I accepted the stone as the corner.

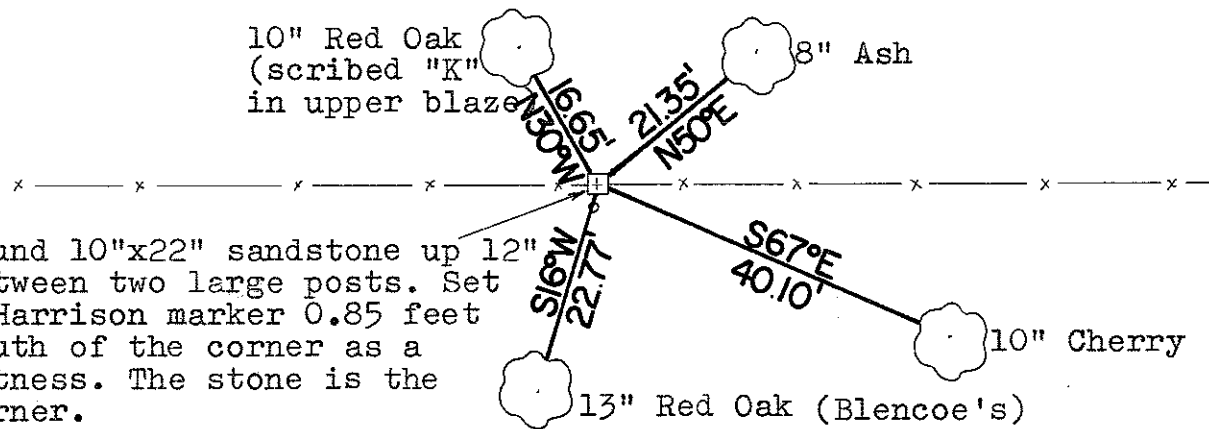
COUNTY SURVEYOR FORM NO. 1

Description of corner and witness monuments, references and accessories used to perpetuate the original or re-established location of this corner:

Crew: Meyer, Kenworthy  
Date: September 26, 1986  
Weather: Clearing, 80°±.  
Witnesses to corner location:

Bryan Meyer

John Kenworthy



Found 10"x22" sandstone up 12" between two large posts. Set a Harrison marker 0.85 feet South of the corner as a witness. The stone is the corner.

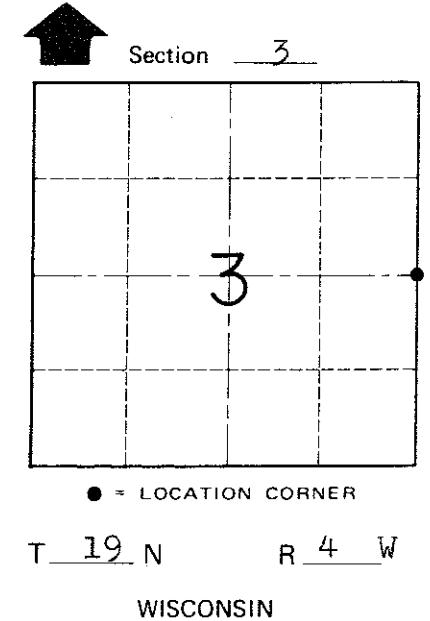
NOTE: The four trees shown are double blazed; each distance shown is to a nail set in a hack in the side of each tree. The bearings shown are magnetic hand compass bearings. Built a mound of dirt around stone; pit 5.5 feet North.

WISCONSIN COORDINATE SYSTEM

SURVEY CONTROL ORDER

Horizontal	_____
Vertical	_____

Corner	East (X)	North (Y)	Elevation (Z)	Zone
Control Sta. Name				



~~City/Village~~ Town of Little Falls  
County of Monroe