

21904030020

I, Harley A. Sime, do hereby certify that on the 14th day of November 19 80, I found (evidence) (~~was~~) of the S<sup>1</sup>/<sub>4</sub> corner of Section 3, T 19 N, R 4 W Fourth Principal Meridian, and I re-established said corner according to the Wisconsin Statutes as shown and described hereon.

Dated this 20th day of Feb. 19 81.

Harley A. Sime, R.L.S. 355

County Surveyor  
Title

History of corner establishment since Original Government Survey  
D. Blencoe set a stone(+) here in 1949.

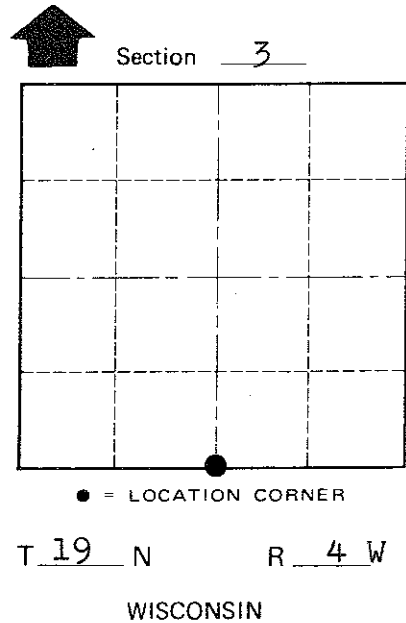
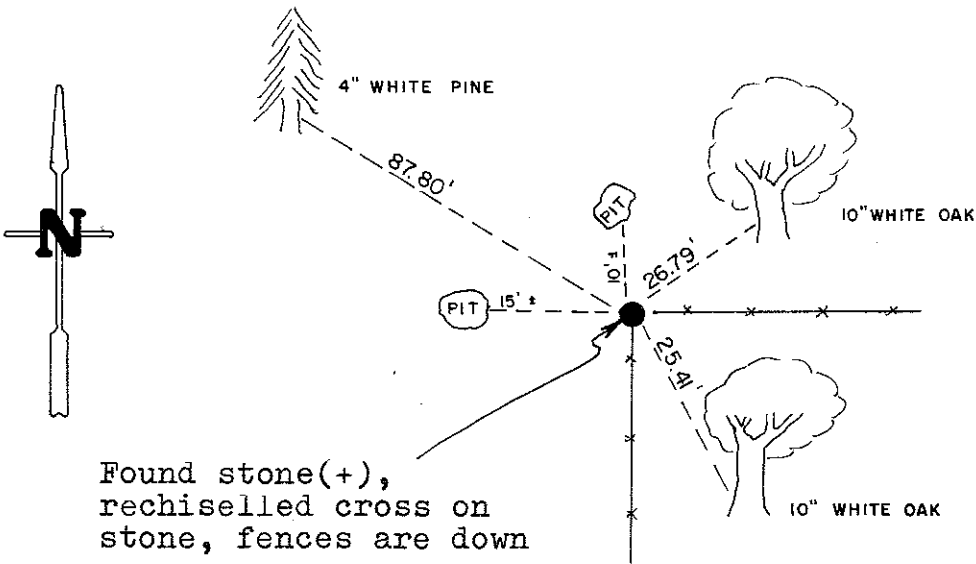
Description of corner evidence found:  
Found Blencoe's stone(+) as described in his notes. New ties were taken.

Description of corner and witness monuments, references and accessories used to perpetuate the original or re-established location of this corner:

Witnesses to corner location:

G. Dechant  
B. Meyer

COUNTY SURVEYOR FORM NO. 1



Approved: **HARLEY A. SIME**  
**MONROE CO. SURVEYOR**

SURVEY CONTROL ORDER

Horizontal	_____
Vertical	_____

WISCONSIN COORDINATE SYSTEM

Corner	East (X)	North (Y)	Elevation (Z)	Zone
Control Sta. Name				

(All trees double blazed with N&C's set)

~~City Village or~~ Town Little Falls  
County of Monroe