

21904022000

I, William C. Jung, do hereby certify that on the 3rd day of August 1983 I found (evidence) ~~(no evidence)~~ of the East 1/4 corner of Section 2, T19 N, R4 W Fourth Principal Meridian, and I re-established said corner according to the Wisconsin Statutes as shown and described hereon.

Dated this 25th day of August 1983.

William C. Jung

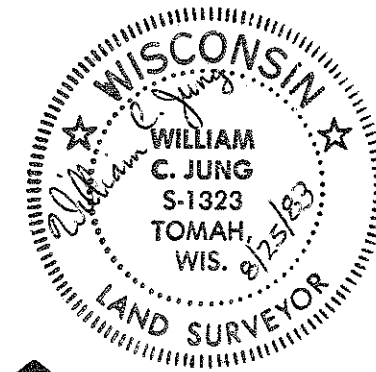
Deputy County Surveyor, R.L.S. 1323
Title

History of corner establishment since Original Government Survey

Fred Holden was at this corner in September of 1904 and found an original tree standing. He was again at this corner in October of 1909 and found the original tree in the NW quadrant. In his notes of November, 1929, David Blencoe calls for a stone being at this corner. At a later date Ray Hurlburt found the stone and set an iron on the North side as a witness marker.

Description of corner evidence found: (see reverse side of this sheet)

I found the stone of record at the corner.



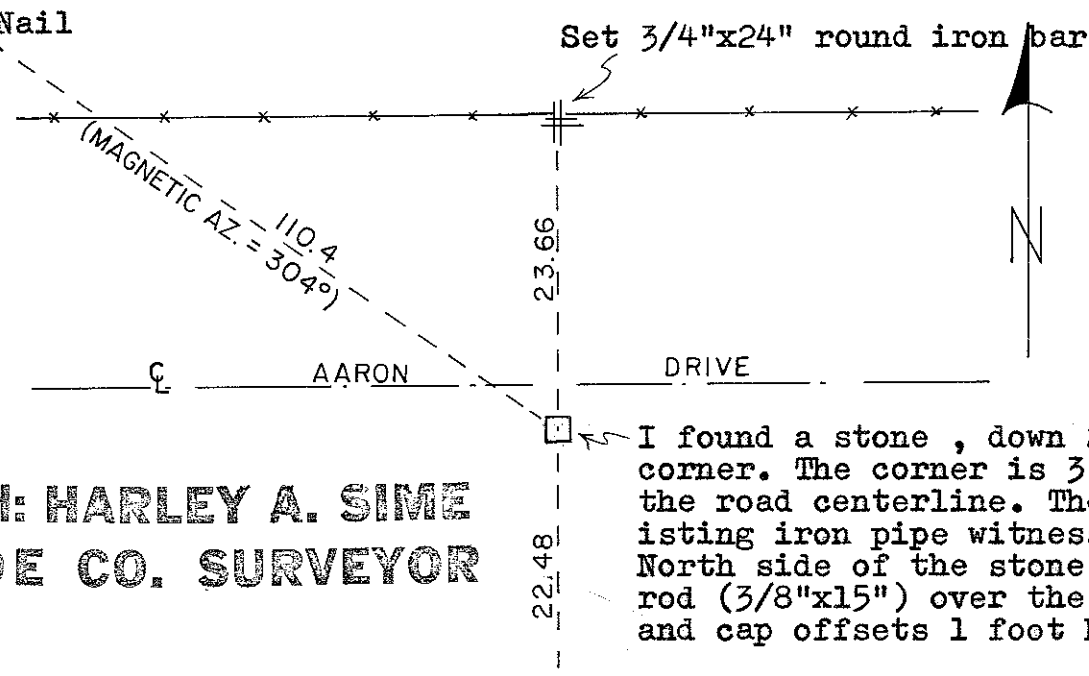
COUNTY SURVEYOR FORM NO. 1

Description of corner and witness monuments, references and accessories used to perpetuate the original or re-established location of this corner:

Unblazed burr oak (not a white oak), C=11.5 feet original bearing tree
Witnesses to corner location:

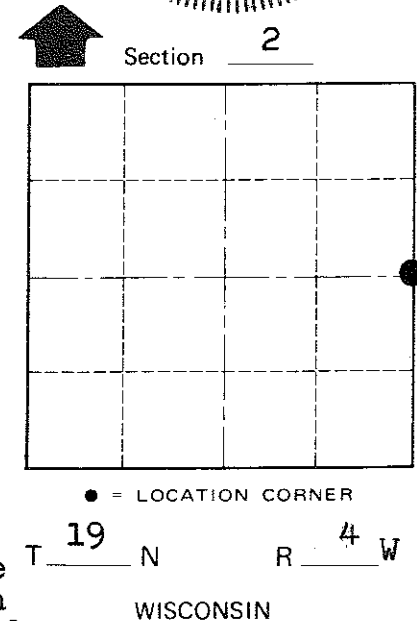
William C. Jung

Dallas Wilhite



I found a stone, down 22", at the corner. The corner is 3 feet South of the road centerline. There is an existing iron pipe witness marker on the North side of the stone. I set an iron rod (3/8"x15") over the stone with nail and cap offsets 1 foot North and 1 foot East.

Approved: **HARLEY A. SIME**
MONROE CO. SURVEYOR



SURVEY CONTROL ORDER

Horizontal	_____
Vertical	_____

WISCONSIN COORDINATE SYSTEM

Corner	East (X)	North (Y)	Elevation (Z)	Zone
Control Sta. Name				

Set a 3/4"x24" round iron bar. I did not find Hurlburt's witness iron.

~~City, Village~~ or Town Little Falls
County of Monroe
Wisconsin