

21904020020

I, Harley A. Sime, do hereby certify that on the 2nd day of June 1976, I found (evidence) (~~no evidence~~) of the N 1/4 corner of Section 11, T 19 N, R 4 W, Fourth Principal Meridian, and I re-established said corner according to the Wisconsin Statutes as shown and described hereon.

Dated this 15th day of March 1978.

Harley Sime

County Surveyor  
Title

History of original corner establishment:

Fred Holdon re-established this corner in November of 1904. He set stone at the corner.

**Holden was also at this corner in Oct. of 1909.**

Description of corner evidence found:

Found and accepted a stone as the corner. Also found iron bar, angle iron, and wood stake beside stone.

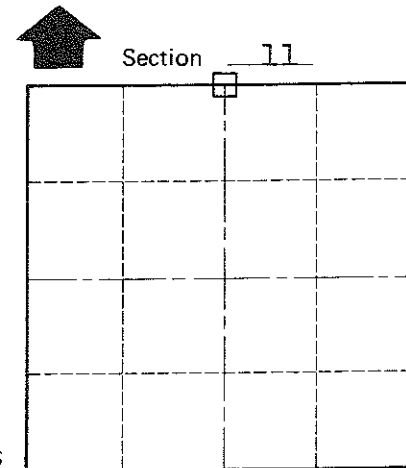
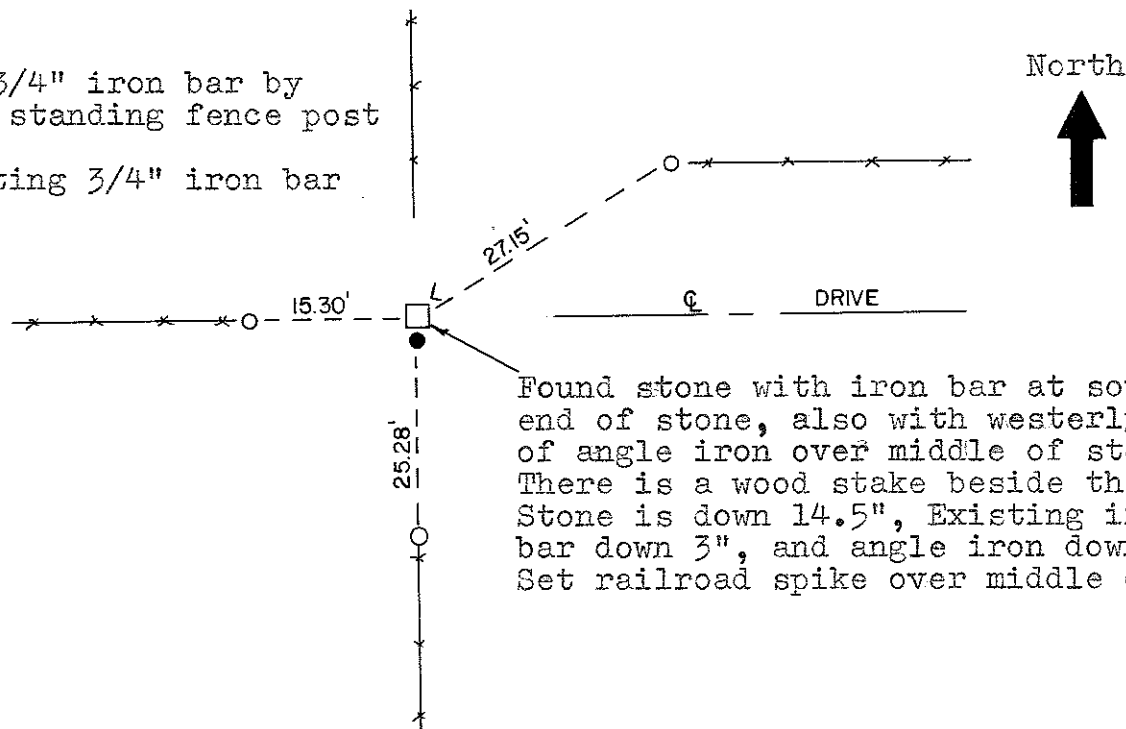
Description of corner and witness monuments, references and accessories used to perpetuate the original or re-established location of this corner:

Witnesses to corner location:

D. Malliet-Crew Chief

A. Lueck

- =Set 3/4" iron bar by last standing fence post
- =Existing 3/4" iron bar

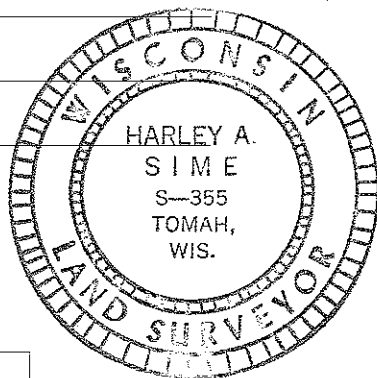


○ = LOCATION CORNER

T 19 N R 4 W

WISCONSIN

COUNTY SURVEYOR FORM NO. 1



SURVEY CONTROL ORDER

Horizontal \_\_\_\_\_

Vertical \_\_\_\_\_

WISCONSIN COORDINATE SYSTEM

Corner	East (X)	North (Y)	Elevation (Z)	Zone
Control Sta. Name				

City, Village or Town Little Falls

County of Monroe