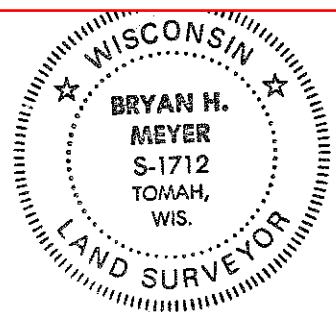


21904020000



H. A. Sime and Associates  
P. O. Box 705  
Tomah, Wisconsin 54660  
Phone: (608)-372-5392

I, Bryan H. Meyer, do hereby certify that on the 30th day of October 1992, I found ~~(no evidence)~~ of the Northeast corner of Section 11, T 19 N, R 4 W Fourth Principal Meridian, and I re-established said corner according to the Wisconsin Statutes as shown and described hereon.

History of corner establishment since Original Government Survey

Keach was here in November and December of 1902 and set a stone "3 feet South of Burlingame's corner" (Obviously a surveyor by the name of Burlingame was here prior to Keach). Holden was here in November of 1904 and set a stone with a cross. Holden was here again in October of 1909 and again states that he set a stone with a cross. Blencoe was here sometime in the 1920s and set a stone "6 links SE of Holden's stone".

Description of corner evidence found:

There appears to be a great deal of confusion and possibly some dispute regarding this corner. I found two stones in the area of this corner. The one to the Southeast I suspect is Blencoe's. The one to the Northwest I suspect to be Holden's. These stones are 3.8 feet apart. After discussing this corner location at length with County Surveyor Gary Sime, it was decided to use Holden's stone as the corner as it fit the current occupation best. Also, Holden was Monroe County Surveyor at the time he set his stone(s).

Dated this 31st day of Dec. 1992

Bryan H. Meyer

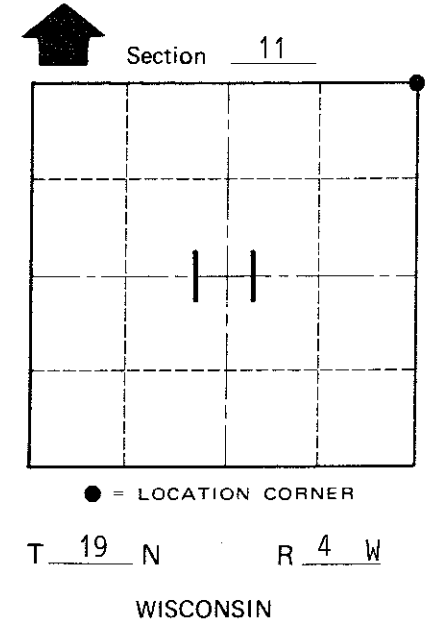
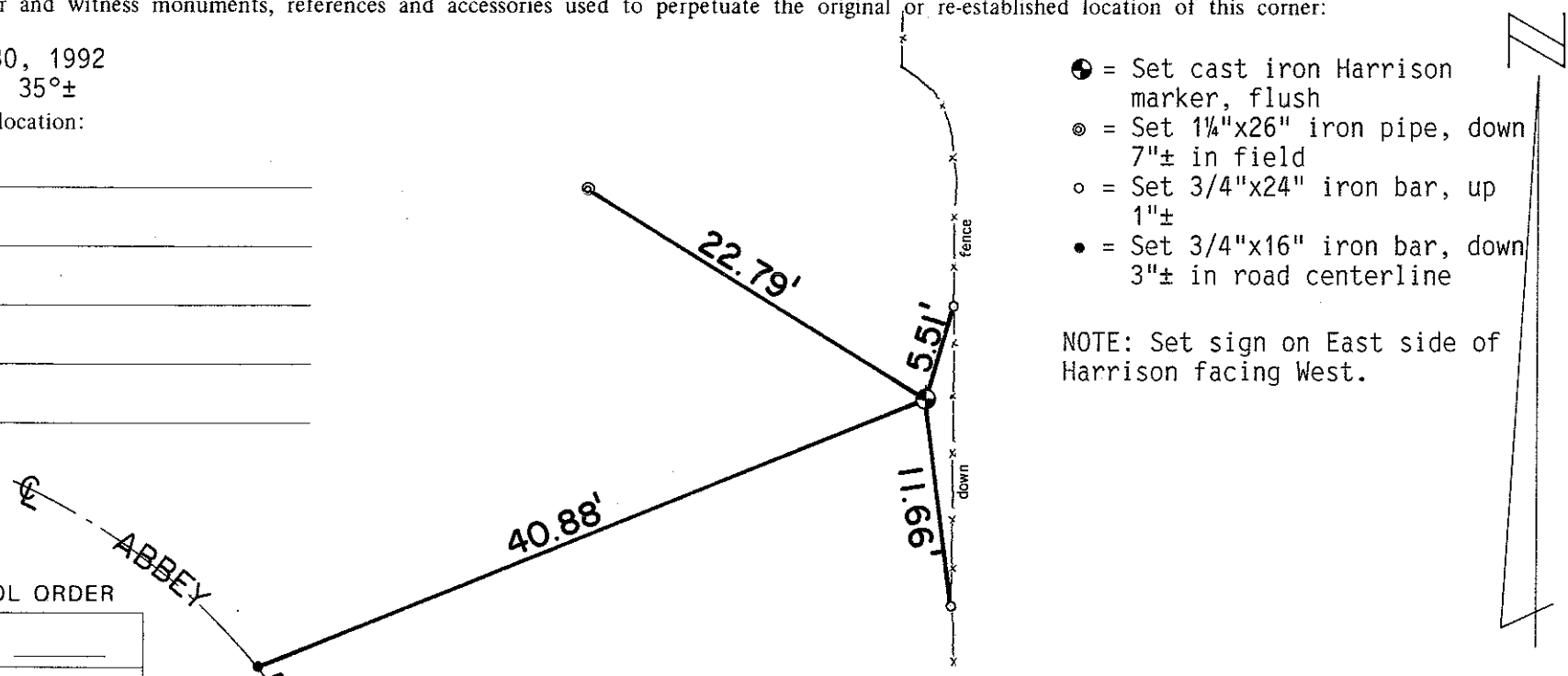
Deputy County Surveyor  
Title

COUNTY SURVEYOR FORM NO. 1

Description of corner and witness monuments, references and accessories used to perpetuate the original or re-established location of this corner:

Crew: Meyer  
Date: October 30, 1992  
Weather: Clear, 35°±  
Witnesses to corner location:

Bryan H. Meyer



SURVEY CONTROL ORDER

Horizontal	_____
Vertical	_____

WISCONSIN COORDINATE SYSTEM

Corner	East (X)	North (Y)	Elevation (Z)	Zone
Control Sta. Name				

~~City/Village of~~ Town of Little Falls  
County of Monroe