

21904010020

I, Harley A. Sime, do hereby certify that on the 26th day of October 1981, I found (evidence) ~~(evidence)~~ of the N/4 corner of Section 12, T19 N, R4 W Fourth Principal Meridian, and I re-established said corner according to the Wisconsin Statutes as shown and described hereon.

History of corner establishment since Original Government Survey Blencoe set a stone here in November of 1929.

Dated this 29th day of Oct 1981.

Harley A. Sime, R.L.S. 355

County Surveyor

Title

Approved: **HARLEY A. SIME**

MONROE CO. SURVEYOR

Description of corner and witness monuments, references and accessories used to perpetuate the original or re-established location of this corner:

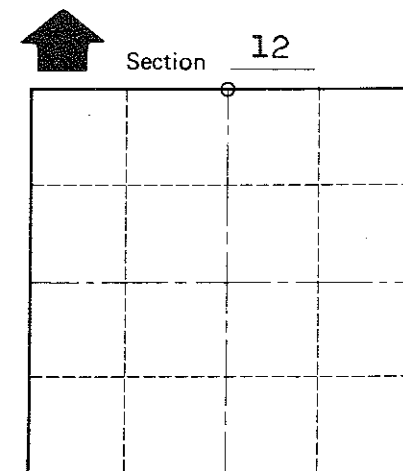
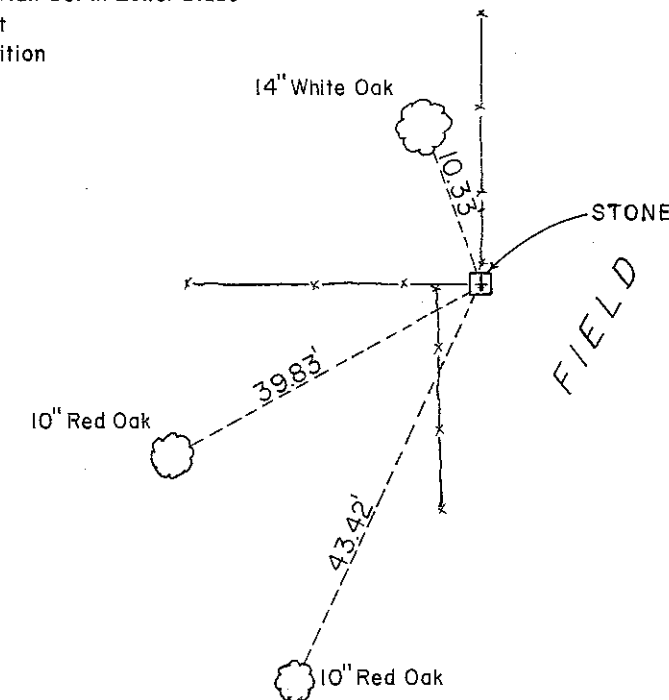
- Trees Double Blazed Nail Set in Lower Blaze
- Pits Dug East & West
- Fences in Poor Condition

Witnesses to corner location:

G. Dechant

B. Meyer

C. Pietz



O = LOCATION CORNER

T 19 N R 4 W

WISCONSIN

(Trees double blazed with nails set)

Approved: **HARLEY A. SIME**
MONROE CO. SURVEYOR

SURVEY CONTROL ORDER

Horizontal	_____
Vertical	_____

WISCONSIN COORDINATE SYSTEM

Corner	East (X)	North (Y)	Elevation (Z)	Zone
Control Sta. Name				

~~Village~~ Town Little Falls
County of Monroe

COUNTY SURVEYOR FORM NO. 1