

CERTIFICATE

CERTIFIED LAND CORNER

No. 33

21904010000

I, Harley A. Sime, do hereby certify that on the 21st day of October 1981, I found (evidence) ~~(evidence)~~ of the SW corner of Section 6, T19 N, R3 W Fourth Principal Meridian, and I re-established said corner according to the Wisconsin Statutes as shown and described hereon.

Dated this 29th day of Oct. 1981.

Harley A. Sime, R.L.S. 355

County Surveyor
Title

History of corner establishment since Original Government Survey

Keach set a stone(+), 17"x10"x5½", here in October of 1902. He also shows a B.T., a B. Oak, N56E, 7 lks. Blencoe found this corner and used it in a survey in November of 1929. Fred Holden was at this corner in September of 1904.

Description of corner evidence found:

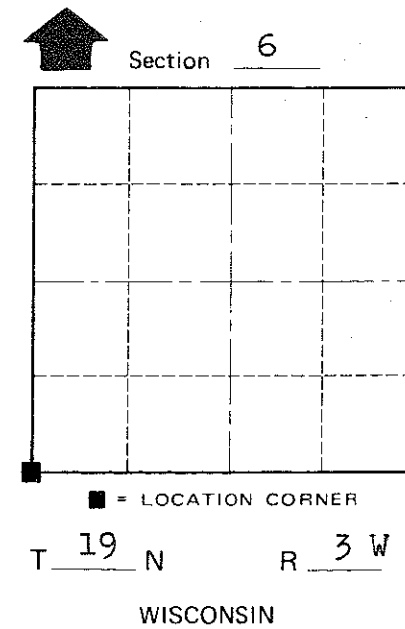
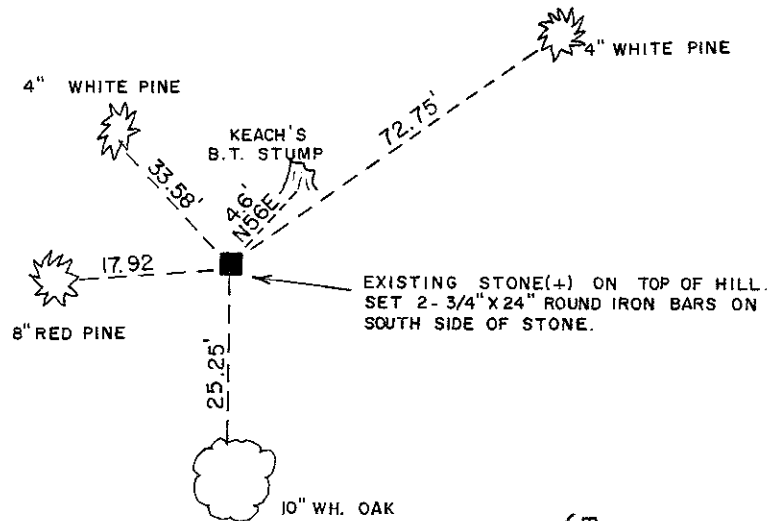
Found Keach's stone(+) and bearing tree. The stone is in good condition, but his B.T. is down and rotted. New ties were taken.

COUNTY SURVEYOR FORM NO. 1

Description of corner and witness monuments, references and accessories used to perpetuate the original or re-established location of this corner:

Witnesses to corner location:

G. Dechant
B. Meyer
C. Pietz



Approved: HARLEY A. SIME
MONROE CO. SURVEYOR

SURVEY CONTROL ORDER

Horizontal	_____
Vertical	_____

WISCONSIN COORDINATE SYSTEM

Corner	East (X)	North (Y)	Elevation (Z)	Zone
Control Sta. Name				

(Trees are double blazed with nails set)

~~City, Village or~~ Town New Lyme
County of Monroe