

Government Land Corner Certificate

2 20 04 31 0020

Jackson County

CORNER NO. _____

TYPE OF MONUMENT: 2" x 34" Brass capped pipe

SECTION 6

STATE PLANE COORDINATES: N 47431.6110

WISCRS NAD83(91)

TOWN 19N

E 73202.6284

12/28/2015

RANGE 4W

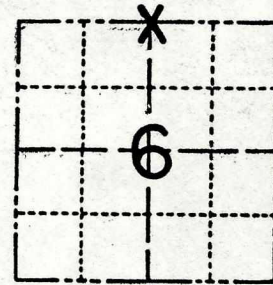
ELEVATION — M.S.L. DATUM: _____

Ethan Remus

THETA ANGLE: _____

FIELD BOOK: HSE File 79N-007 PAGE _____

DRAWN BY: N.R. Hurlburt



LOCATION (Indicated by 'X')

BASIS FOR MONUMENT LOCATION

See CSM 340

Show info such as: History of corner, with reference to Vol. and pg., dates, surveyor; exact description of monument replaced; if location computed, by taped or EDM traverse; landowner remarks, etc. (Use reverse side if necessary)

In Jackson County Survey Record No. 1521, Vol. 4, P. 277, dated 1941, David A. Blencoe re-established this corner proportionately between section corners. The corner fell in a pond, so he did not monument it, but set a car axle as a witness 64 links (42.24 feet) South. I found his witness monument, straightened it, and built up his mound. The pond he mentions is no longer there. I re-established the corner 42.24 feet North of the witness on a line perpendicular to the line between section corners. I drove a 2" x 34" brass capped pipe about 4" into rock in old stream channel and built a mound around it. I drove a steel witness post with sign 1.0 foot West of the pipe.

SEAL:



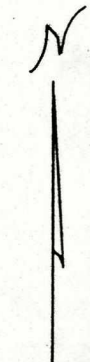
DATA SHOWN HERE ON CERTIFIED CORRECT:

Norman R. Hurlburt
 Registered Land Surveyor

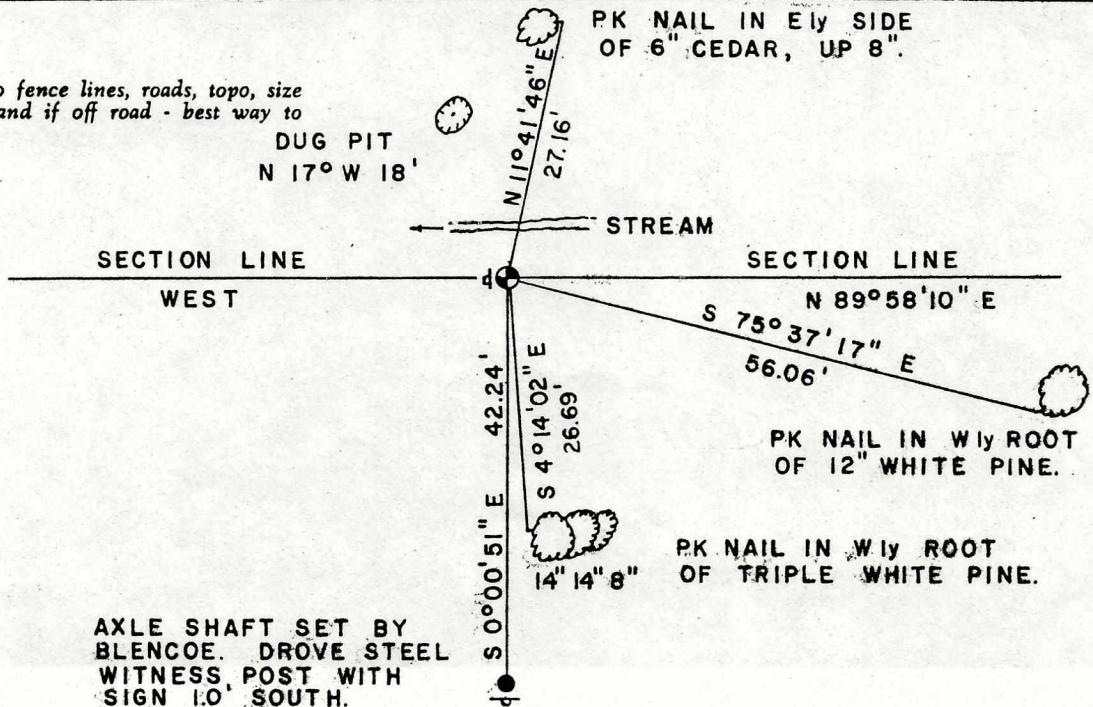
DATE: MAY 23, 1980

TIE SKETCH

Show at least four ties, also fence lines, roads, topo, size and type of witness trees' and if off road - best way to arrive at corner.



SCALE 1" = 20'



AXLE SHAFT SET BY
 BLENCOE. DROVE STEEL
 WITNESS POST WITH
 SIGN 1.0' SOUTH.

22004310020

Government Land Corner Certificate

Jackson County

TYPE OF MONUMENT: 2" x 34" Brass capped pipe

STATE PLANE COORDINATES: N _____
E _____

ELEVATION — M.S.L. DATUM: _____

THETA ANGLE: _____

FIELD BOOK: HSE File 79N-007 PAGE _____

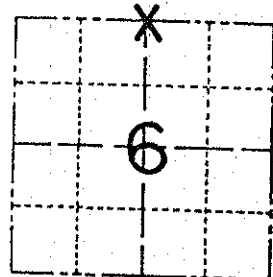
DRAWN BY: N.R. Hurlburt

CORNER NO. _____

SECTION 6

TOWN 19N

RANGE 4W



LOCATION
(Indicated by 'X')

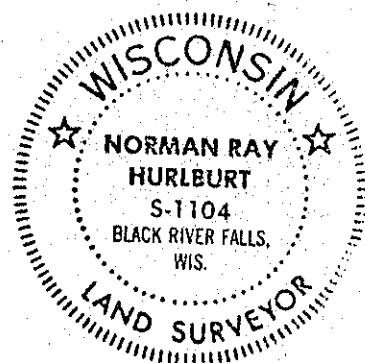
BASIS FOR MONUMENT LOCATION

See CSM 340

Show info such as: History of corner, with reference to Vol. and pg., dates, surveyor; exact description of monument replaced; if location computed, by taped or EDM traverse; landowner remarks, etc. (Use reverse side if necessary)

In Jackson County Survey Record No. 1521, Vol. 4, P. 277, dated 1941, David A. Blencoe re-established this corner proportionately between section corners. The corner fell in a pond, so he did not monument it, but set a car axle as a witness 64 links (42.24 feet) South. I found his witness monument, straightened it, and built up his mound. The pond he mentions is no longer there. I re-established the corner 42.24 feet North of the witness on a line perpendicular to the line between section corners. I drove a 2" x 34" brass capped pipe about 4" into rock in old stream channel and built a mound around it. I drove a steel witness post with sign 1.0 foot West of the pipe.

SEAL:



DATA SHOWN HERE ON
CERTIFIED CORRECT:

Norman R. Hurlburt
Registered Land Surveyor

DATE: MAY 23, 1980

TIE SKETCH

Show at least four ties, also fence lines, roads, topo, size and type of witness trees and if off road - best way to arrive at corner.

