

2 2004 31 0000

# Government Land Corner Certificate

## Jackson County

TYPE OF MONUMENT: 2" x 14" aluminum pipe over auto

STATE PLANE COORDINATES: N 47456.7382 drive shaft  
E 75800.5773 WISCRS NAD83(91)

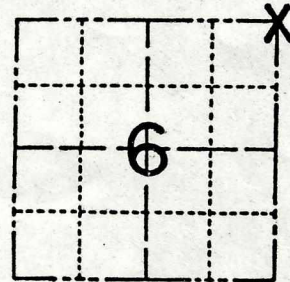
ELEVATION — M.S.L. DATUM: \_\_\_\_\_ 12/23/2015

THETA ANGLE: \_\_\_\_\_ Ethan Remus

FIELD BOOK: HSE File 79N-007 PAGE \_\_\_\_\_

DRAWN BY: N.R. Hurlburt

CORNER NO. \_\_\_\_\_  
SECTION 6  
TOWN 19N  
RANGE 4W



LOCATION  
(Indicated by 'X')

### BASIS FOR MONUMENT LOCATION

See CSM 340

Show info such as: History of corner, with reference to Vol. and pg., dates, surveyor; exact description of monument replaced; if location computed, by taped or EDM traverse; landowner remarks, etc. (Use reverse side if necessary)

In May 1904, Fred Holden, Monroe County Surveyor, found the original Northwest BT here, and marked a 10" Jack Pine S30½E 22½ links from the corner. In about 1940, Ray W. Hurlburt found evidence of old stake, decayed roots of the original Northwest BT, and Holden's BT, all agreeing fairly well. He set part of an auto drive shaft 32 inches long, up 6 inches in a small mound. David A. Blencoe, in Jackson County Survey Record No. 1521, Vol. 4, P. 277, dated 1941, makes note of this otherwise unrecorded work. I found the drive shaft as indicated, drove it flush, set a 2" x 14" aluminum capped pipe over it, and drove a steel witness post with sign 1.0 foot North of it. The corner is 75 to 100 feet South of steep bank of Wolf Creek.

SEAL:



DATA SHOWN HERE ON  
CERTIFIED CORRECT:

*Norman R. Hurlburt*  
Registered Land Surveyor

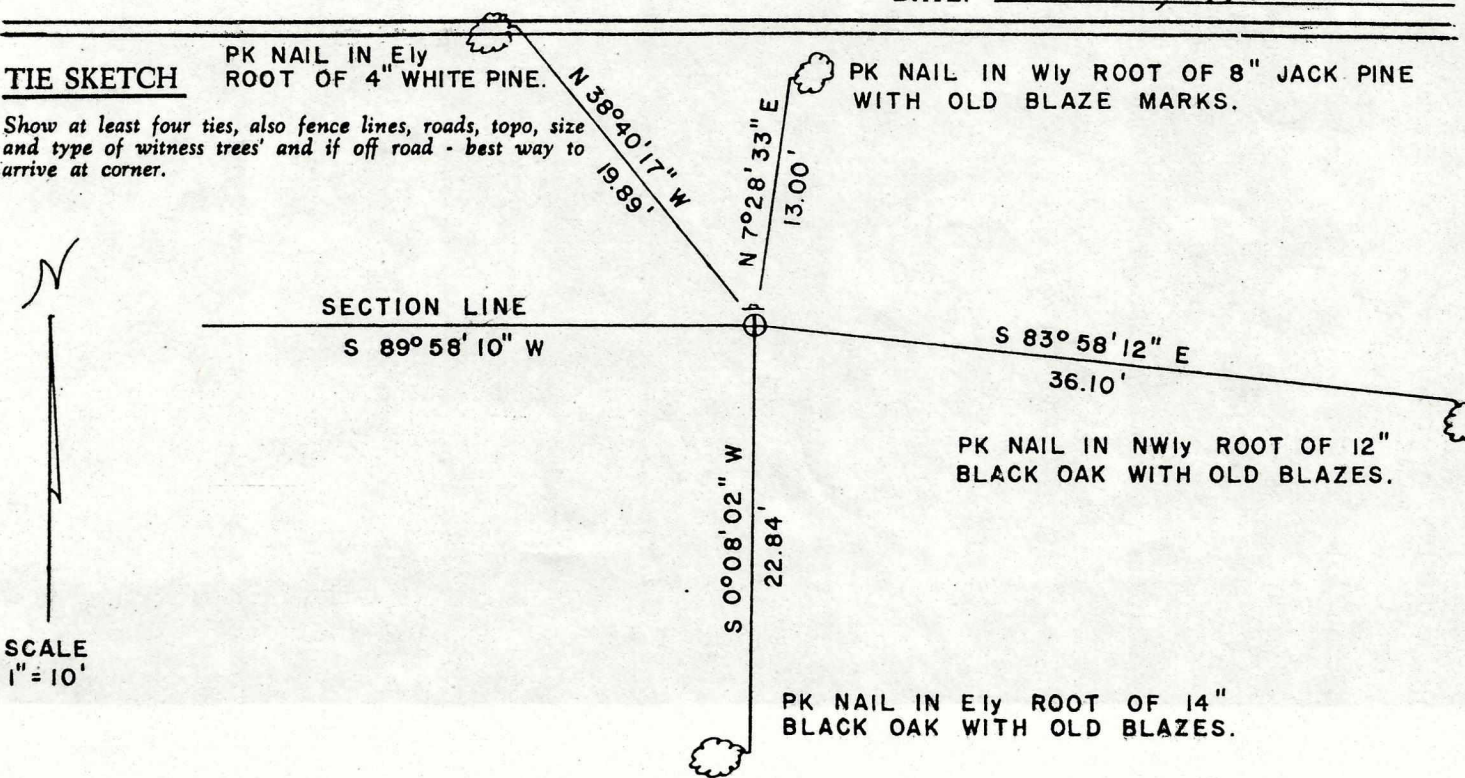
DATE: MAY 23 1980

### TIE SKETCH

PK NAIL IN Ely ROOT OF 4" WHITE PINE.

PK NAIL IN Wly ROOT OF 8" JACK PINE WITH OLD BLAZE MARKS.

Show at least four ties, also fence lines, roads, topo, size and type of witness trees' and if off road - best way to arrive at corner.



22004310000

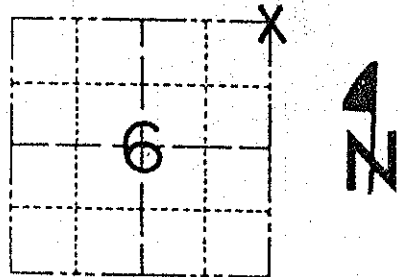
Government Land Corner Certificate

Jackson County

TYPE OF MONUMENT: 2" x 14" aluminum pipe over auto drive shaft
STATE PLANE COORDINATES: N \_\_\_\_\_ E \_\_\_\_\_

ELEVATION - M.S.L. DATUM: \_\_\_\_\_
THETA ANGLE: \_\_\_\_\_
FIELD BOOK: HSE File 79N-007 PAGE \_\_\_\_\_
DRAWN BY: N.R. Hurlburt

CORNER NO. \_\_\_\_\_
SECTION 6
TOWN 19N
RANGE 4W



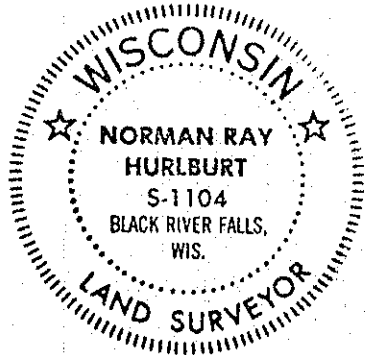
BASIS FOR MONUMENT LOCATION

See CSM 340

Show info such as: History of corner, with reference to Vol. and pg., dates, surveyor; exact description of monument replaced; if location computed, by taped or EDM traverse; landowner remarks, etc. (Use reverse side if necessary)

In May 1904, Fred Holden, Monroe County Surveyor, found the original Northwest BT here, and marked a 10" Jack Pine S30 1/2 E 22 1/2 links from the corner. In about 1940, Ray W. Hurlburt found evidence of old stake, decayed roots of the original Northwest BT, and Holden's BT, all agreeing fairly well. He set part of an auto drive shaft 32 inches long, up 6 inches in a small mound. David A. Blencoe, in Jackson County Survey Record No. 1521, Vol. 4, P. 277, dated 1941, makes note of this otherwise unrecorded work. I found the drive shaft as indicated, drove it flush, set a 2" x 14" aluminum capped pipe over it, and drove a steel witness post with sign 1.0 foot North of it. The corner is 75 to 100 feet South of steep bank of Wolf Creek.

SEAL:



DATA SHOWN HERE ON CERTIFIED CORRECT:

Signature of Norman R. Hurlburt, Registered Land Surveyor

DATE: May 23, 1980

TIE SKETCH

PK NAIL IN Ely ROOT OF 4" WHITE PINE.

PK NAIL IN Wly ROOT OF 8" JACK PINE WITH OLD BLAZE MARKS.

Show at least four ties, also fence lines, roads, topo, size and type of witness trees' and if off road - best way to arrive at corner.

