

21904090010

I, Harley A. Sime, do hereby certify that on the 11th day of June 1981, I found ~~(evidence)~~ (no evidence) of the S 1/16 SE corner of Section 9, T 19 N, R 4 W Fourth Principal Meridian, and I re-established said corner according to the Wisconsin Statutes as shown and described hereon.

History of corner establishment since Original Government Survey

Fred Holden was here in February of 1904 and set a grate bar.

Description of corner evidence found:

Looked for Holden's grate bar and found a 1 1/2" iron pipe, but did not use it as the corner. Set point on line and at equal distance between the S 1/4 corner and SE corner of this section.

Dated this 28th day of August 1981.

Harley A. Sime, R.L.S. 355

County Surveyor

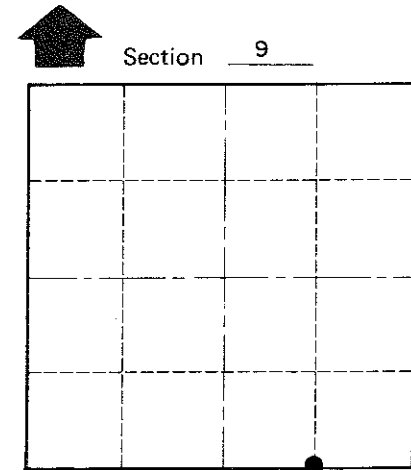
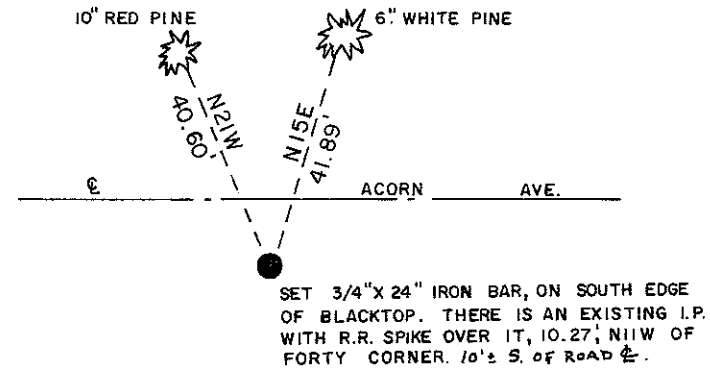
Approved: **HARLEY A. SIME**
MONROE CO. SURVEYOR

Description of corner and witness monuments, references and accessories used to perpetuate the original or re-established location of this corner:

Witnesses to corner location:

B. Meyer

C. Pietz



● = LOCATION CORNER

(Trees double blazed with nails set in lower blaze)

SURVEY CONTROL ORDER

Horizontal	_____
Vertical	_____

WISCONSIN COORDINATE SYSTEM

Corner	East (X)	North (Y)	Elevation (Z)	Zone
Control Sta. Name				

CHURCH

~~City, Village or Town~~ Little Falls

County of Monroe

COUNTY SURVEYOR FORM NO. 1