

21904080020

I, Gary L. Dechant, do hereby certify that on the 2nd day of February 2000, I found ~~(evidence)~~ (no evidence) of the N¹/₄ corner of Section 17, T 19 N, R 4 W Fourth Principal Meridian, and I re-established said corner according to the Wisconsin Statutes as shown and described hereon.

Dated this 5th day of February 2000.

Gary L. Dechant

Registered Land Surveyor 1744

Title

History of corner establishment since Original Government Survey

Hamilton LaRue set a stone here in October 1897.

Description of corner evidence found:

We could not find LaRue's stone. It was probably destroyed during logging operations. The lands have also been plowed and recently planted with pine.

LaRue set other stones in the NE¹/₄ of Section 17, none of which we could find. Deep frost made it very difficult and again heavy logging literally has destroyed and changed the whole area.

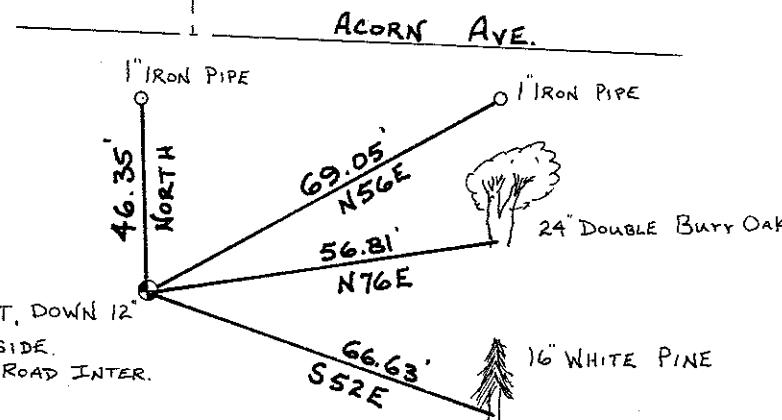
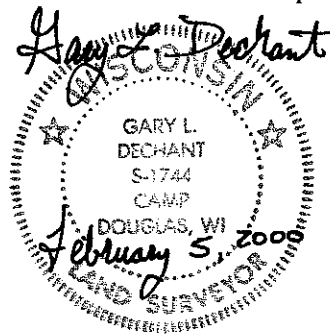
We reset the corner on line and doubled distance from the NE corner of section 17 and the remains of the fence corner at the NE corner of the NW¹/₄-NE¹/₄. Fits LaRue's distance almost perfectly and very close to being a straight line between section corners.

Description of corner and witness monuments, references and accessories used to perpetuate the original or re-established location of this corner:

Witnesses to corner location:

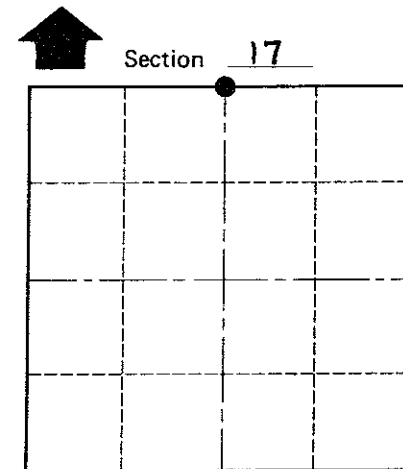
Zachariah P. Dechant

Gary L. Dechant



SET TCP MONUMENT, DOWN 12\"/>

Trees double blazed with 40d nails set.



• = LOCATION CORNER

T 19 N R 4 W

WISCONSIN

COUNTY SURVEYOR FORM NO. 1

SURVEY CONTROL ORDER

| | |
|------------|-------|
| Horizontal | _____ |
| Vertical | _____ |

WISCONSIN COORDINATE SYSTEM

| Corner | East (X) | North (Y) | Elevation (Z) | Zone |
|-------------------|----------|-----------|---------------|------|
| Control Sta. Name | | | | |

~~City, Village or~~ Town LITTLE FALLS

County of MONROE