

21904070020

I, Timothy J. Jeatran, do hereby certify that on the 2nd day of March 1999, I found (evidence) ~~(no evidence)~~ of the South Quarter corner of Section 7, T 19 N, R 4W Fourth Principal Meridian, and I re-established said corner according to the Wisconsin Statutes as shown and described hereon.

Dated this ninth day of March 1999.

Timothy J. Jeatran  
Registered Land Surveyor  
Title

**History of corner establishment since Original Government Survey**  
W. Kenyon subdivided Section 7 on March 17, 1886 but shows no tie to the South Quarter corner. A subsequent survey by Holden in 1904 uses Kenyon's center of Section with no reference to the South Quarter corner. Fred Zietlow in his survey of May 8, 1970 ran the line from the Southeast to the Southwest corner of Section 7 but did not show the South Quarter corner. On September 22, 1982 Gregory J. Hofmeister set a cast iron Harrison Monument at this (Description of corner evidence found:) corner with four ties to it.

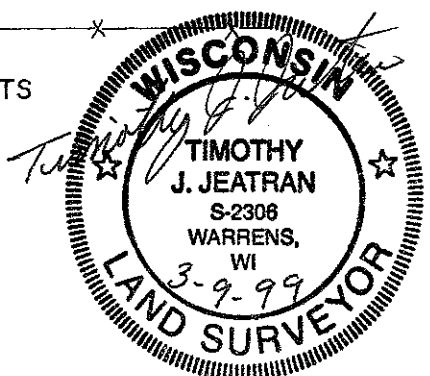
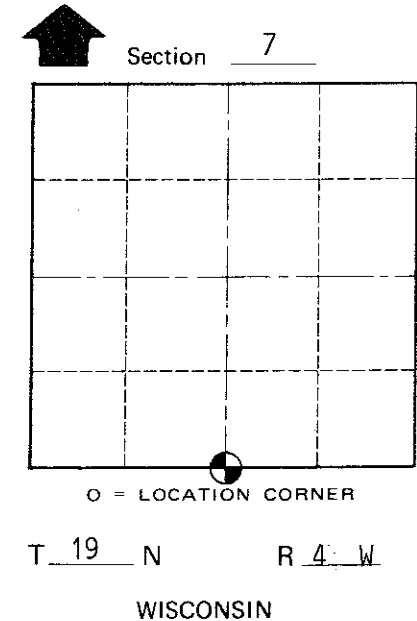
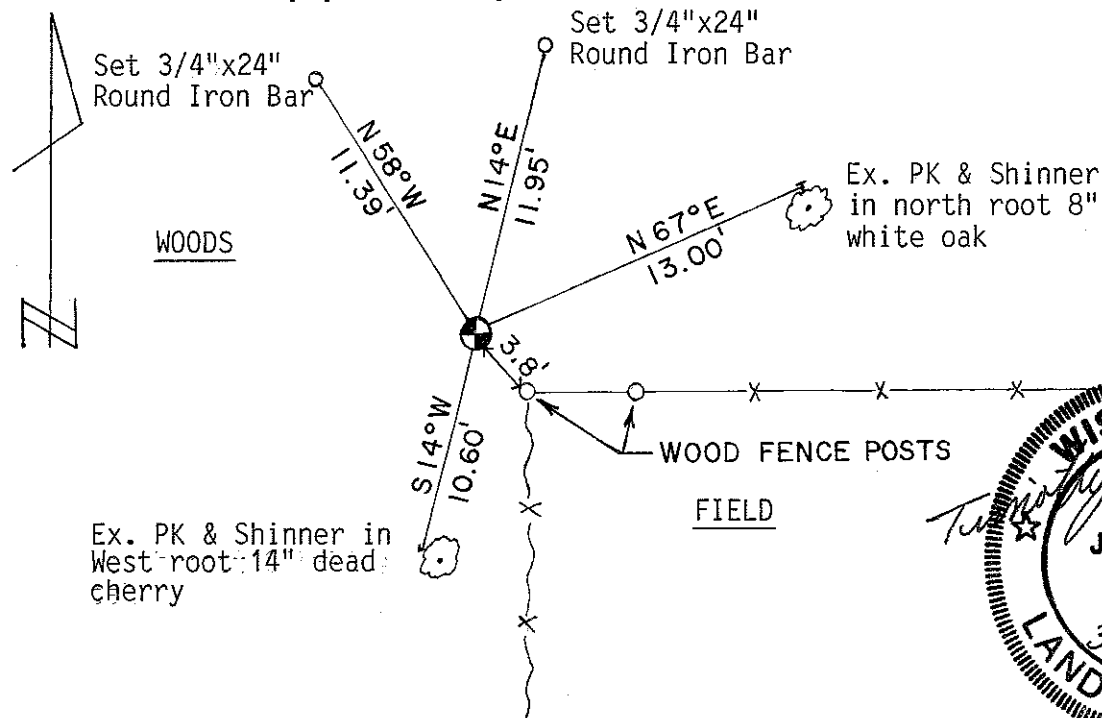
There was a bad storm in June of 1998 which blew down two of the tie trees. When the 18" Red Oak blew down, its roots tipped over the Harrison and broke it into 3 pieces. The distances from the two remaining ties fit well to the bottom remaining piece of Harrison. We set a TCP Cast Iron Monument from Hofmeister's two remaining ties and set a sign 1' north.

Description of corner and witness monuments, references and accessories used to perpetuate the original or re-established location of this corner:

Witnesses to corner location:

Timothy J. Jeatran

Aaron T. Stockwell



SURVEY CONTROL ORDER

Horizontal	_____
Vertical	_____

WISCONSIN COORDINATE SYSTEM

Corner	East (X)	North (Y)	Elevation (Z)	Zone
Control Sta. Name				

City, Village or Town Little Falls  
County of Monroe

COUNTY SURVEYOR FORM NO. 1

I, Gregory J. Hofmeister, do hereby certify that on the 22nd day of September 1982, I found (evidence) ~~(no evidence)~~ of the South Quarter corner of Section 7, T 19 N, R 4 W Fourth Principal Meridian, and I re-established said corner according to the Wisconsin Statutes as shown and described hereon.

Dated this fourth day of October 1982.

Gregory J. Hofmeister  
 Registered Land Surveyor  
 Title

**History of corner establishment since Original Government Survey**

W. Kenyon subdivided Section 7 on March 17, 1886 but shows no tie to the South Quarter corner. A subsequent survey by Holden in 1904 uses Kenyon's center of Section with no reference to the South Quarter corner. Fred Zietlow in his survey of May 8, 1970 ran the line from the Southeast to the Southwest corner of Section 7 but did not show the South Quarter corner.

**Description of corner evidence found:**

A fence corner with fences East and South was 4.77 feet North and 15.57 feet West of the prorated section, therefore I feel this location is acceptable.

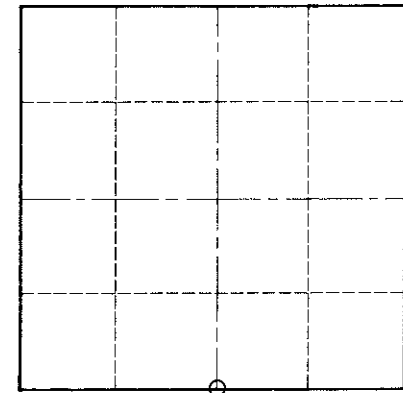
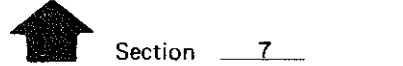
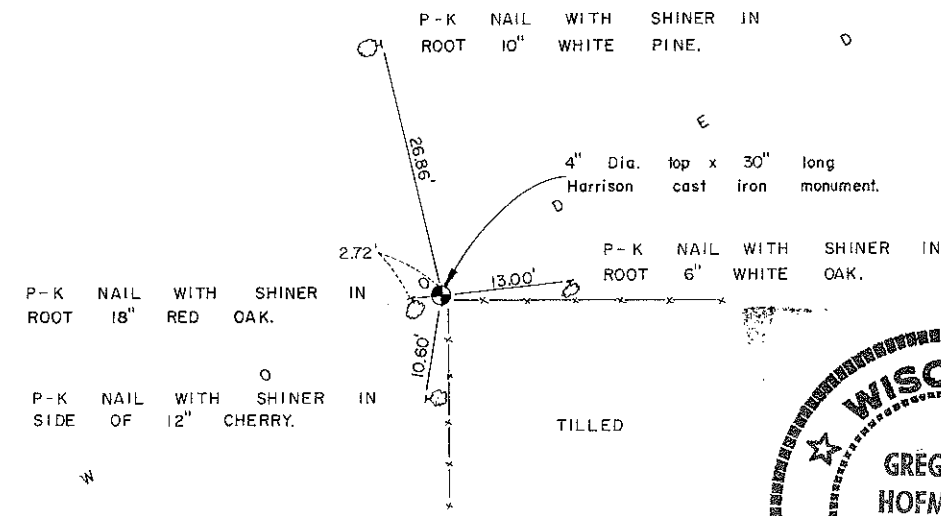
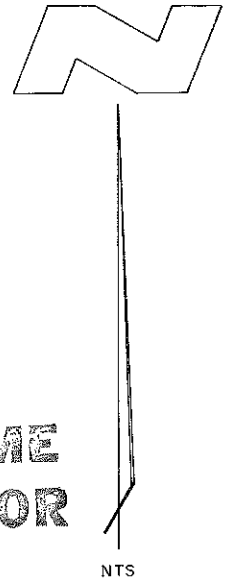
COUNTY SURVEYOR FORM NO. 1

Description of corner and witness monuments, references and accessories used to perpetuate the original or re-established location of this corner:

Witnesses to corner location:

Gregory J. Hofmeister  
Ernest H. Koeppe

**Approved: HARLEY A. SIME  
 MONROE CO. SURVEYOR**



O = LOCATION CORNER  
 T 19 N R 4 W  
 WISCONSIN

**SURVEY CONTROL ORDER**

Horizontal	_____
Vertical	_____

**WISCONSIN COORDINATE SYSTEM**

Corner	East (X)	North (Y)	Elevation (Z)	Zone
Control Sta. Name				

City, Village or Town Little Falls

County of Monroe