

21904060020

I, Gregory J. Hofmeister, do hereby certify that on the 21st day of September 19 82, I found (evidence) ~~(no evidence)~~ of the North Quarter corner of Section 7, T 19 N, R 4 W Fourth Principal Meridian, and I re-established said corner according to the Wisconsin Statutes as shown and described hereon.

Dated this fourth day of October 19 82.
Gregory J. Hofmeister
Registered Land Surveyor
Title

History of corner establishment since Original Government Survey

A survey by W. Kenyon in March of 1886 noted the original bearing tree, but no new monument set. In his survey of May 1904 Fred Holden showed buried crockery at this corner. In a later survey dated August 31 and September 1, 1904 he mentioned only bearing trees.

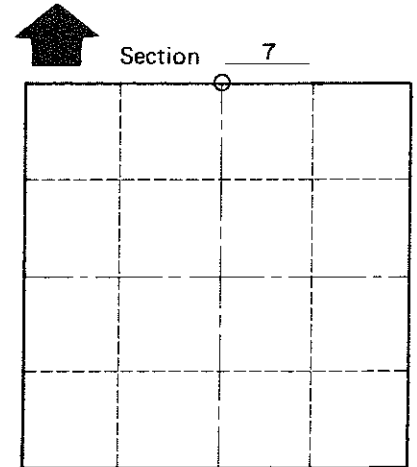
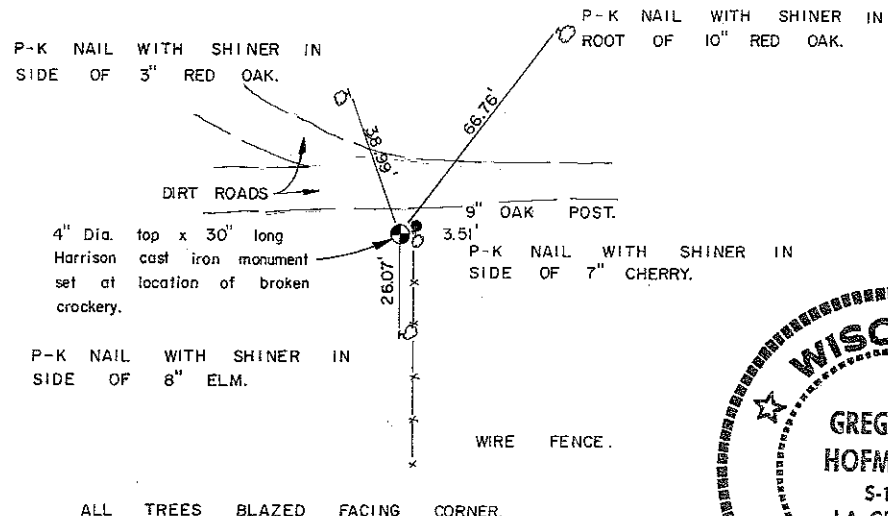
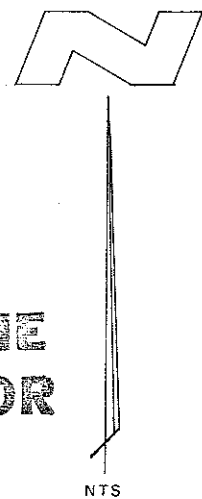
Description of corner evidence found:

None of the bearing trees (original or Holden's) were found. Approximately one-half pint of broken crockery was found buried one to one and one-half feet deep at a location approximately three feet East and one foot North of the prorated location for this corner.

Description of corner and witness monuments, references and accessories used to perpetuate the original or re-established location of this corner:

Witnesses to corner location:
Gregory J. Hofmeister
Ernest H. Koeppe

Approved: **HARLEY A. SIME**
MONROE CO. SURVEYOR



T 19 N R 4 W
WISCONSIN



SURVEY CONTROL ORDER

Horizontal _____
Vertical _____

WISCONSIN COORDINATE SYSTEM

Corner	East (X)	North (Y)	Elevation (Z)	Zone
Control Sta. Name				

City, Village or Town Little Falls
County of Monroe

COUNTY SURVEYOR FORM NO. 1