

30

**U.S. PUBLIC LAND CORNER
MAINTENANCE**

**Corner ID : S1/4 Sec. 5, T19N-R4W
21904050020**

<u>DATE</u>	<u>CREW</u>	<u>MONUMENT TYPE</u> -----
December 17, 2015	Zachariah P. Dechant Gary L. Dechant	Existing Harrison, 23' NE of Academy Road On line with fence north and east

<u>References:</u>	<u>Bearing</u>	<u>Distance</u>
1) Set 3/4"x24" iron bar, down 12" in field, east of driveway	N22E	71.43'
2) Set 3/4"x24" iron bar, down 6", 3' south of fence, SE of 3" Cedar	S88E	36.55'
3) Set 3/4"x24" iron bar, down 8" SW of road NE of small pond	S22W	62.24'
4) Existing 1" iron pipe, at fence corner, west of driveway	North	43.98' (43.98')



I, William C. Jung, do hereby certify that on the June 4th day of June 1979, I found (evidence) ~~(no evidence)~~ of the South 1/4 corner of Section 5, T. 19 N, R. 4 W Fourth Principal Meridian, and I re-established said corner according to the Wisconsin Statutes as shown and described hereon.

Dated this 2nd day of Feb. 19 81.

William C. Jung

William C. Jung, R.L.S. 1323
Title

History of corner establishment since Original Government Survey

Schroeder (?) was at this corner in April and May of 1893. LaRue was at this corner on October of 1897. Holden was at this corner in September of 1904. Fred Zietlow set a R.R. spike at this corner in his survey of December, 1972.

Description of corner evidence found:

Found Zietlow's R.R. spike, removed it and replaced it with a Harrison marker. I accepted this occupied corner as the best available evidence of the original government survey.

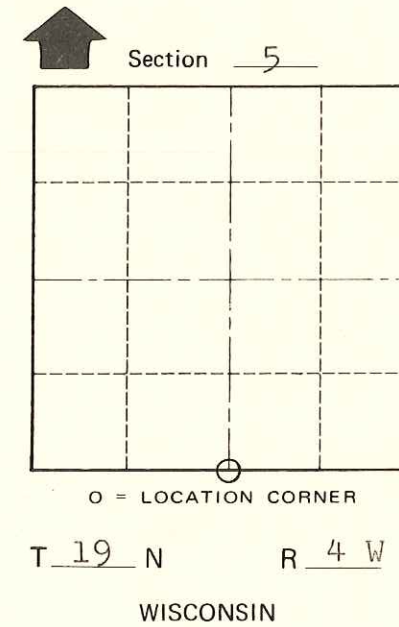
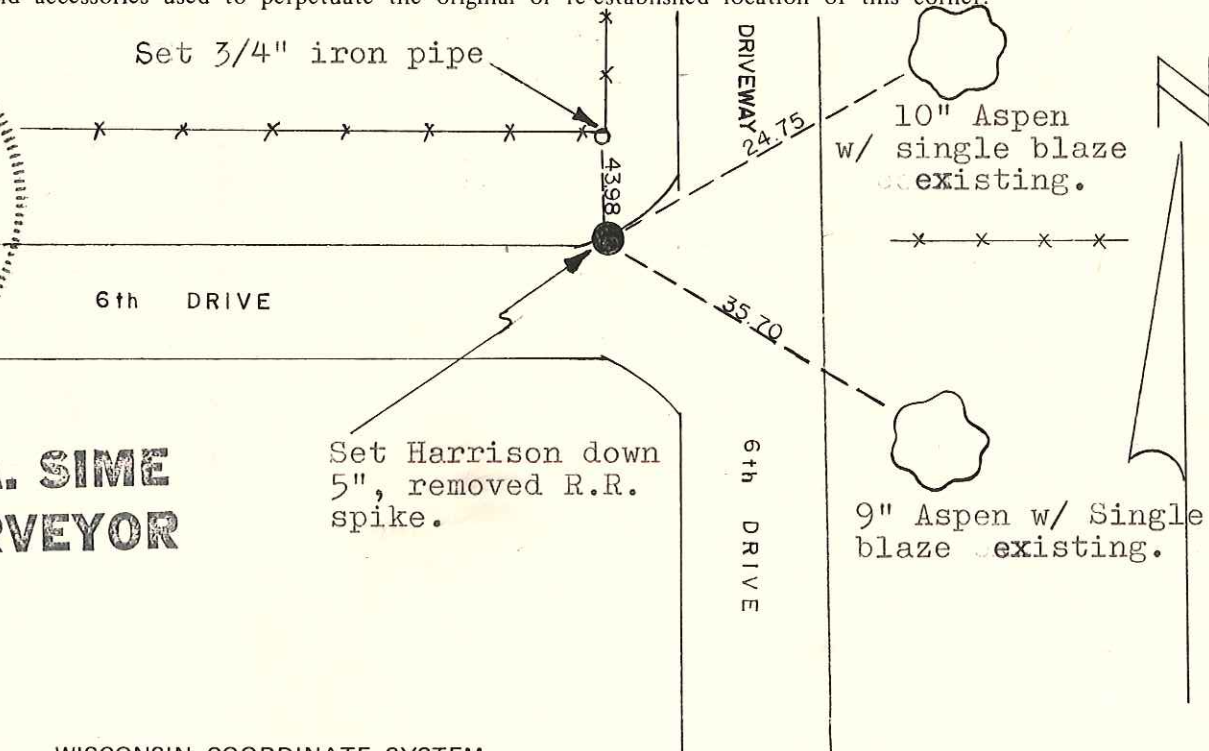
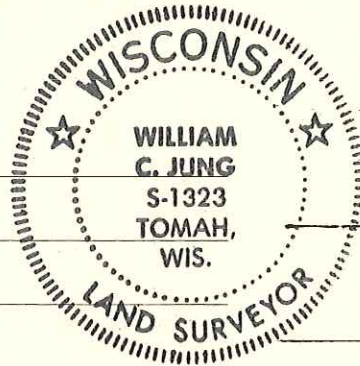
See Reverse Side For Maintenance

COUNTY SURVEYOR FORM NO. 1

Description of corner and witness monuments, references and accessories used to perpetuate the original or re-established location of this corner:

Witnesses to corner location:

W. Jung
B. Meyer
K.T. Webb



**Approved: HARLEY A. SIME
MONROE CO. SURVEYOR**

SURVEY CONTROL ORDER

Horizontal	_____
Vertical	_____

WISCONSIN COORDINATE SYSTEM

Corner	East (X)	North (Y)	Elevation (Z)	Zone
Control Sta. Name				

City, Village or Town Little Falls
County of Monroe
Wisconsin