

CERTIFICATE

CERTIFIED LAND CORNER

No. 56

21904172000

I, Harley A. Sime, do hereby certify that on the 11th day of June 19 81, I found (evidence) (~~was~~) of the E/4 corner of Section 17, T 19 N, R 4 W, Fourth Principal Meridian, and I re-established said corner according to the Wisconsin Statutes as shown and described hereon.

History of original corner establishment:

Schroeder was here in April of 1893.
F. Zietlow was here in August of 1970 and set a 3/4"x24" iron bar.

Description of corner evidence found:

Found Zietlow's 3/4" iron bar and replaced it with a Harrison Monument.

Dated this 28th day of August 19 81.

Harley A. Sime, R.L.S. 355

County Surveyor

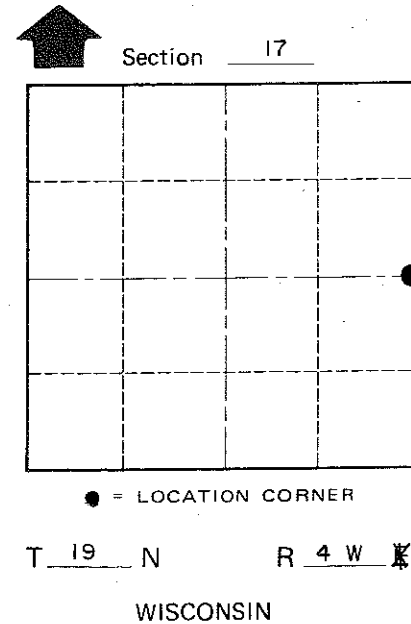
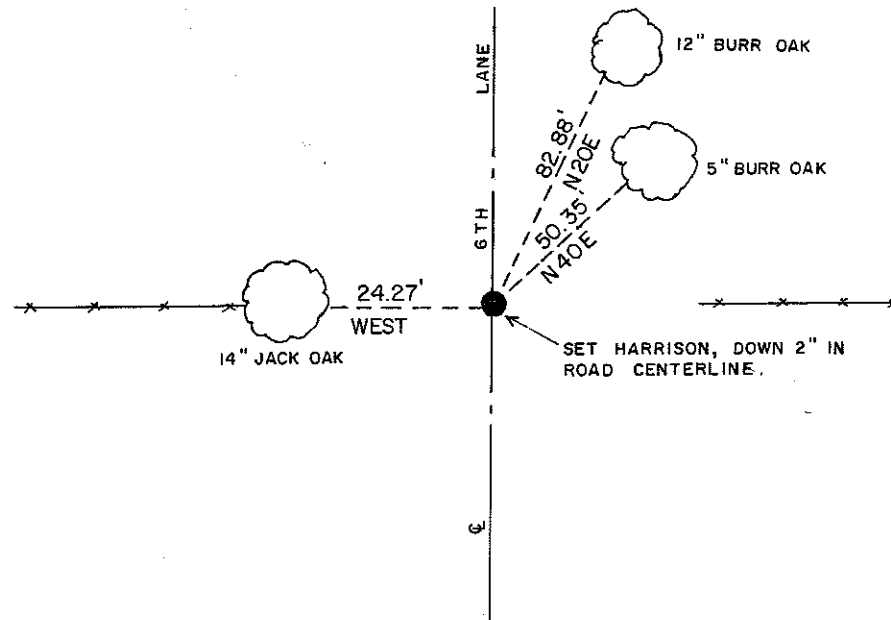
Approved: **HARLEY A. SIME**
MONROE CO. SURVEYOR

Description of corner and witness monuments, references and accessories used to perpetuate the original or re-established location of this corner:

Witnesses to corner location:

B. Meyer

C. Pietz



(Trees double blazed with nail set in lower blaze)

~~City, Village or~~ Town Little Falls
County of Monroe

COUNTY SURVEYOR FORM NO. 1

SURVEY CONTROL ORDER

Horizontal _____
Vertical _____

WISCONSIN COORDINATE SYSTEM

Corner	East (X)	North (Y)	Elevation (Z)	Zone
Control Sta. Name				