

64

**U.S. PUBLIC LAND CORNER
MAINTENANCE**

Corner ID : S1/4 Sec.14, T19N-R4W

21904140020

<u>DATE</u>	<u>CREW</u>	<u>MONUMENT TYPE -----</u>
October 15, 2014	Zachariah P.Dechant Gary L. Dechant	Existing Harrison in tact in north-south fence Placed sign on 10" Black Oak, 7' east

References:

	<u>Bearing</u>	<u>Distance</u>
1) Set 3/4"x24" square iron bar down 6", 4' east of double White Oak (BT)	N40E	15.70'
2) Set 3/4"x24" square iron bar, down 6", 3' south of 6" White Oak	S64E	23.30'
3) Set 3/4"x24" square iron bar, down 12" in field	S54W	21.00'
4) Set 3/4"x24" square iron bar, down 12" in field	N35W	24.69'

Gary L. Dechant

October 15, 2014

I, Bryan H. Meyer, do hereby certify that on the 8th day of March 1984, I found (evidence) ~~(no evidence)~~ of the South 1/4 corner of Section 14, T 19 N, R 4 W Fourth Principal Meridian, and I re-established said corner according to the Wisconsin Statutes as shown and described hereon.

Dated this 17th day of August 1984.
Bryan H. Meyer
Deputy County Surveyor
Title

History of corner establishment since Original Government Survey

Kenyon was here in May of 1886. Holden was here in April of 1910.

Description of corner evidence found:

I set this corner on line between the Southwest and Southeast corners of Section 14 and in a North-South fence line.

See Reverse Side For Maintenance



COUNTY SURVEYOR FORM NO. 1

Description of corner and witness monuments, references and accessories used to perpetuate the original or re-established location of this corner:

Date: March 8, 1984
Weather: Clear, Windy, 15°±

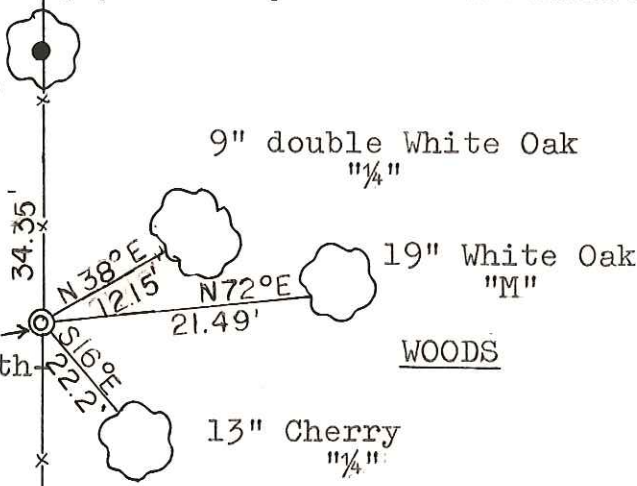
Witnesses to corner location:

Bryan H. Meyer
Dennis Perrigo

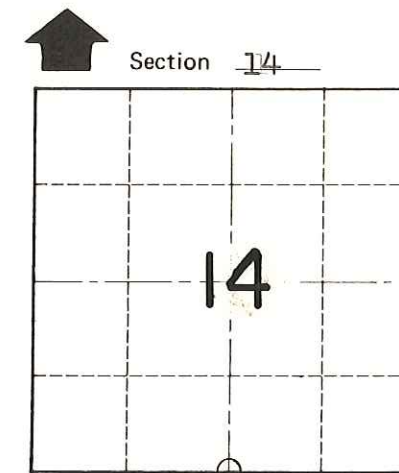
Set 3/4"x24" iron bar on west side of 12" White Oak.

OPEN
FIELD

Set Harrison up 2" in north south fence.



The trees shown are double blazed. The distances are to nails set in hacks on the back of each tree. The bearings shown are hand compass bearings. The trees are scribed in the upper blaze as shown in parentheses.



T 19 N R 4 W
WISCONSIN

SURVEY CONTROL ORDER

Horizontal _____
Vertical _____

Corner	East (X)	North (Y)	Elevation (Z)	Zone
Control Sta. Name				

~~City, Village or~~ Town Little Falls

County of Monroe