

**21904140000**

I, Harley A. Sime, do hereby certify that on the twenty-third day of May 19 80, I found (evidence) ~~no evidence~~ of the Southwest corner of Section 13, T 19 N, R 4 W Fourth Principal Meridian, and I re-established said corner according to the Wisconsin Statutes as shown and described hereon.

Dated this 16th day of Jan. 1981.

Harley A. Sime - R.L.S. 355

County Surveyor Monroe County, Wisconsin.

History of corner establishment since Original Government Survey

Fred Holden was here in April of 1910.  
D. Mulock was here in March of 1967 and set a 1" pinched iron pipe. Kenyon was at this corner in 1886.

Description of corner evidence found:

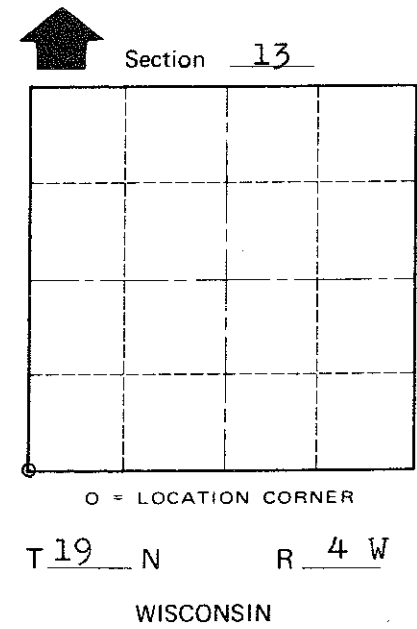
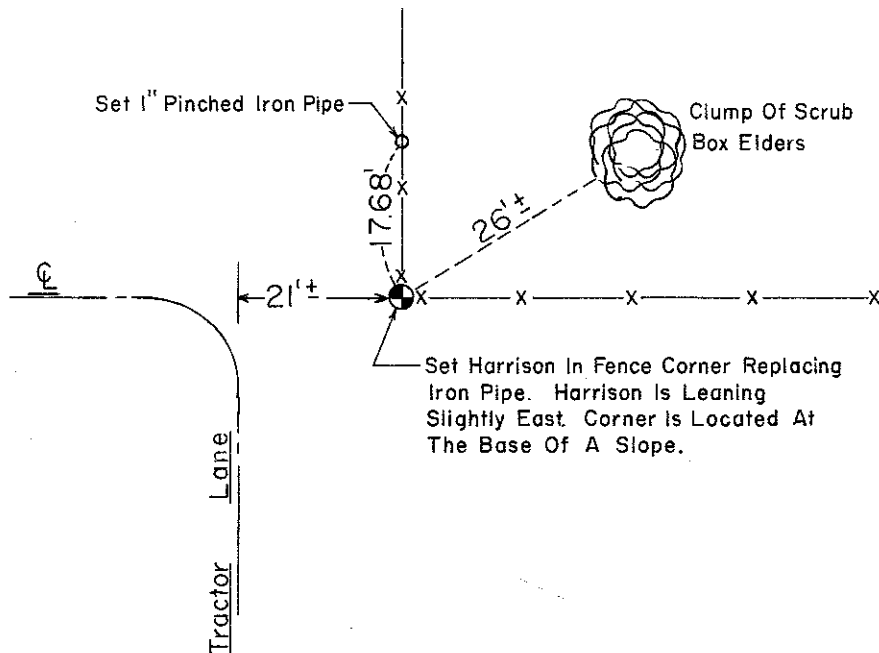
Found 1" pinched iron pipe. I replaced this pipe with a Harrison monument. I reset the 1" pipe in the North - South fence line as a witness marker.

COUNTY SURVEYOR FORM NO. 1

Description of corner and witness monuments, references and accessories used to perpetuate the original or re-established location of this corner:

Witnesses to corner location:

- Bryan Meyer
- Todd Tormoen
- Charles Dade



**Approved: HARLEY A. SIME**  
**MONROE CO. SURVEYOR**

SURVEY CONTROL ORDER

Horizontal	_____
Vertical	_____

WISCONSIN COORDINATE SYSTEM

Corner	East (X)	North (Y)	Elevation (Z)	Zone
Control Sta. Name				

~~City, Village or~~ Town of Little Falls  
County of Monroe  
Wisconsin