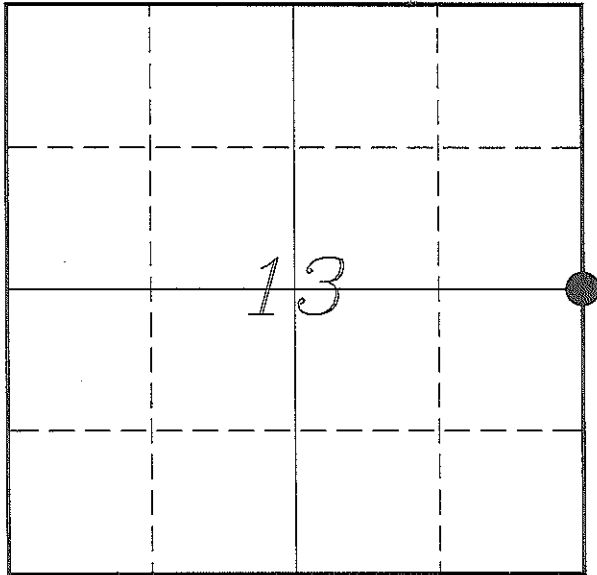


U. S. PUBLIC LAND SURVEY MONUMENT RECORD

**SECTION 13, T19N, R4W, TOWN OF LITTLE FALLS
MONROE COUNTY, WISCONSIN**



MONROE COUNTY COORDINATE SYSTEM	
Northing	444465.080
Easting	631515.426
Datum	NAD 1983 (1991)
Elevation	
Datum	
TYPE OF LANDMARK:	
Set 1 1/4" X 18" Iron Rod	
BEARINGS ARE REFERENCED TO:	
Monroe County Coordinates	

LOCATION OF LANDMARK

Witnesses: Laurence E Johns III
Larry Handschy

Date: 29 November 2013

Describe any record evidence, monument evidence, testimonial evidence or any other material evidence you considered and whether the monument was found or restored through acceptance of an obliterated evidence location.

No bearing trees of record were located.

Could not locate the PK Nail set by Meyer.

Re-established this corner using Meyer's survey. This location matches occupation at the center of Section 13 and also the centerline of CTH 'S' to the South.

Accepted this location as the best available evidence of original government corner and placed a 1 1/4" Iron Rod due to being in the pavement of Benton Road.

Describe or show any material discrepancy between the location of the restored corner and that of the corner previously restored or re-established.

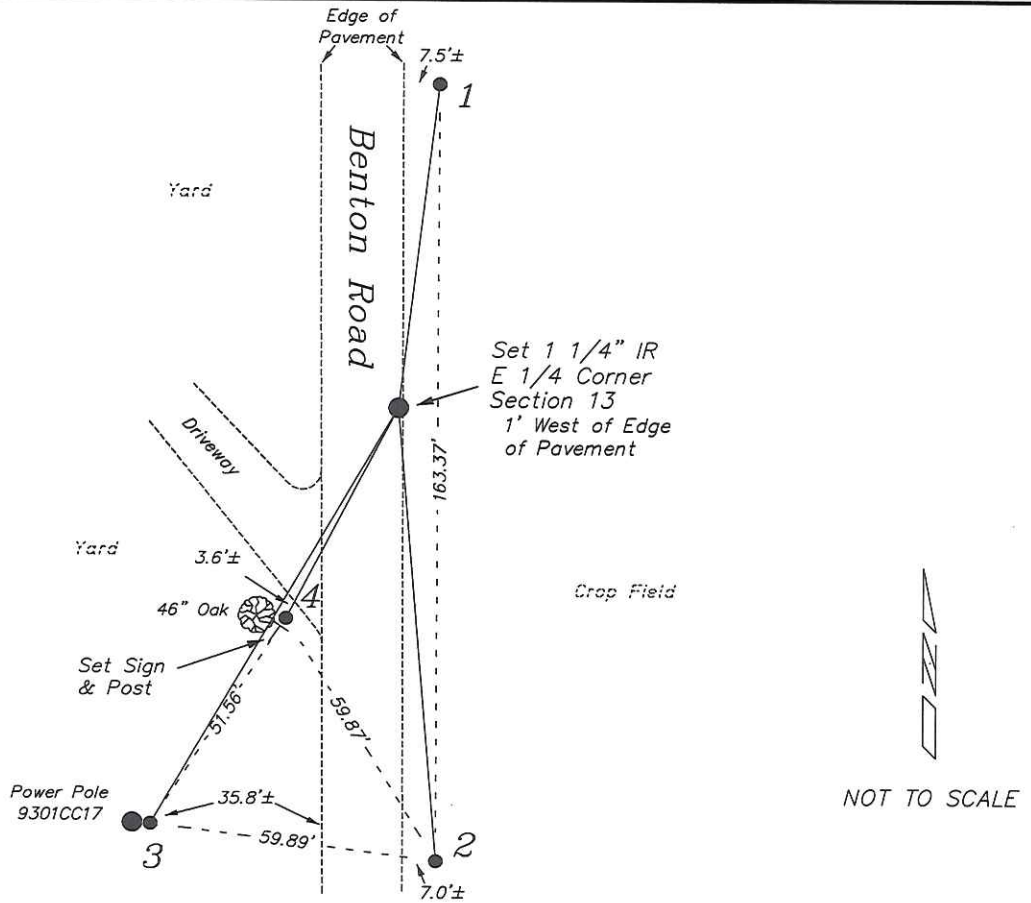
James Freeman established this corner in December 1845.

Bryan Meyer was at this corner, in June 2004, during a survey in Section 13. He shows that he set a PK Nail at this corner.

Jonathan Schmitz was at this corner, in May 2006 and again in May 2007, during surveys in Section 18. He shows this corner as being per Meyer's survey.

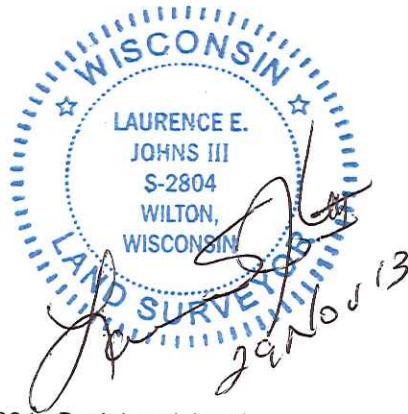
RECORD OF DURABLE WITNESS MONUMENTS

NO	DESCRIPTION	BEARING	DISTANCE
1	Set 3/4" x 18" Iron Rod In Center of Drainage Ditch	N 06°54'08" E	68.65'
2	Set 3/4" x 18" Iron Rod In Center of Drainage Ditch	S 04°52'12" E	95.56'
3	Set 3/4" x 18" Iron Rod 1' East of Power Pole #9301CC17	S 30°22'14" W	101.43'
4	Set 3/4" x 18" Iron Rod 1' East of a 46" Oak	S 27°45'24" W	49.98'



PLAN VIEW DRAWING OF REFERENCE TIES

Map Showing Distance And Direction To Other Public Land Survey
Corners Used For Re-Establishing The Corner



I, Laurence E Johns III RLS 2804, Registered Land Surveyor, herby certify that the corner location shown on this record was determined by me or under my direction and control, and that this U.S. Public Land Survey Monument Record is correct and complete to the best of my knowledge and belief.

Laurence E. Johns III
 Laurence E Johns III RLS 2804
 Eagle Ridge Surveying, LLC
 PO Box 213
 Wilton, Wisconsin
 29 November 2013

