

21904130000

I, William C. Jung 8th, do hereby certify that on the June day of 19 79 I found (evidence) ~~(no evidence)~~ of the N.E. Section corner of Section 24, T 19 N, R 4 W Fourth Principal Meridian, and I re-established said corner according to the Wisconsin Statutes as shown and described hereon.

Dated this 2nd day of Feb. 19 81.

William C. Jung  
 William C. Jung, R.L.S. 1323

History of corner establishment since Original Government Survey

Schroeder (?) was at this corner in May of 1886. Duane Marten set an iron bar at this corner in May of 1973.

Description of corner evidence found:

Found Marten's iron bar, removed it and replaced it with a Harrison marker. I accepted this occupied corner as the best available evidence of the original government corner.

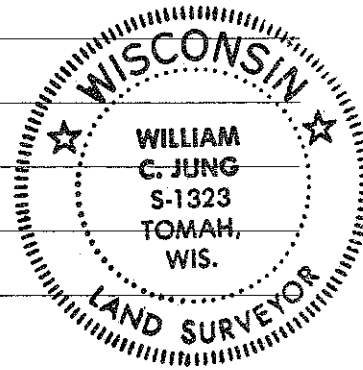
Approved: **HARLEY A. SIME**  
**MONROE CO. SURVEYOR**

COUNTY SURVEYOR FORM NO. 1

Description of corner and witness monuments, references and accessories used to perpetuate the original or re-established location of this corner:

Witnesses to corner location:

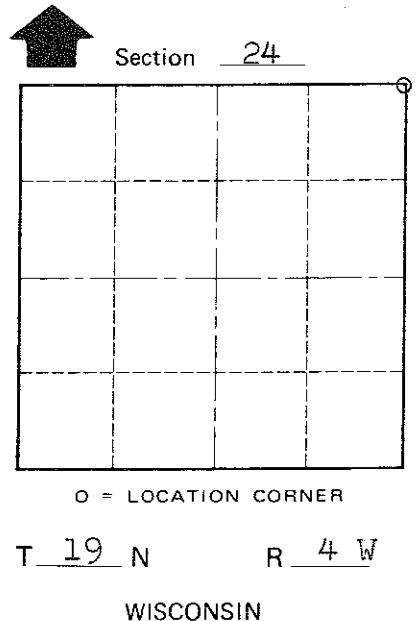
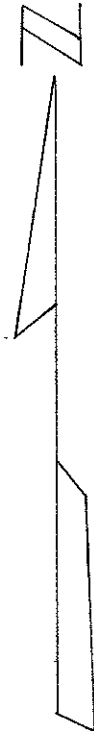
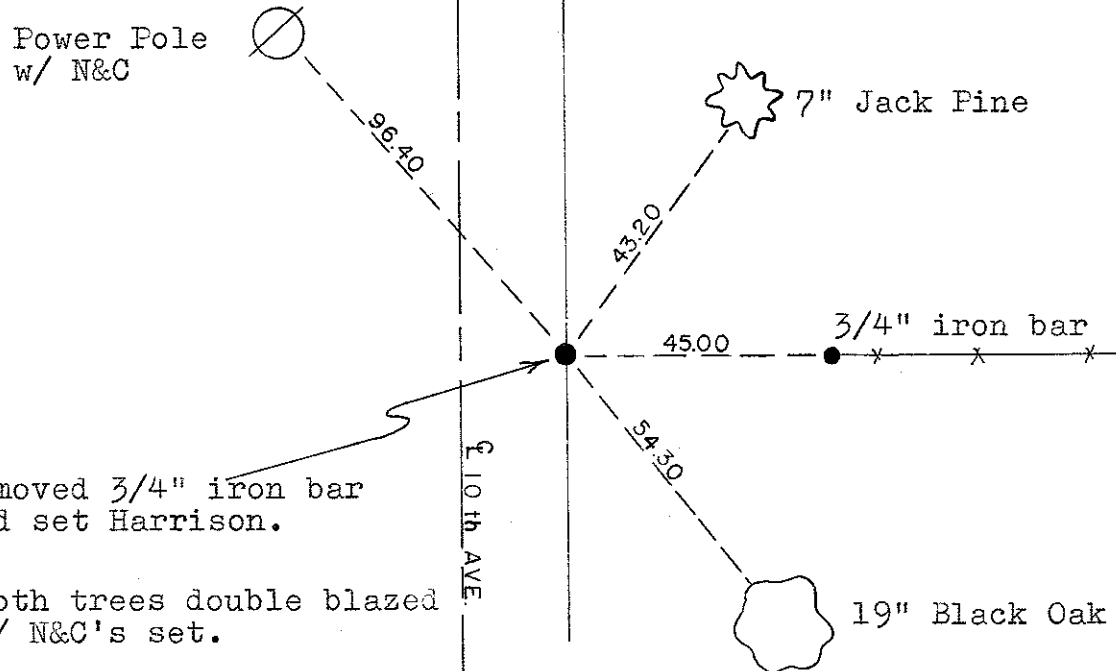
W. Jung  
C. Dietz  
K. T. Webb



Power Pole w/ N&C

Removed 3/4" iron bar and set Harrison.

NOTE: Both trees double blazed w/ N&C's set.



SURVEY CONTROL ORDER

Horizontal	_____
Vertical	_____

WISCONSIN COORDINATE SYSTEM

Corner	East (X)	North (Y)	Elevation (Z)	Zone
Control Sta. Name				

City, Village or Town Little Falls  
 County of Monroe  
Wisconsin