

CERTIFICATE

CERTIFIED LAND CORNER

No. 42

21904120020

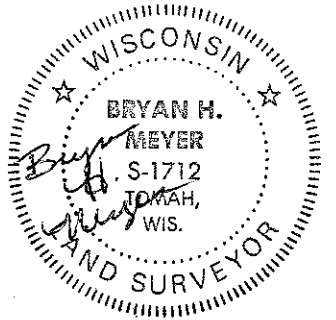
I, Harley A. Sime, do hereby certify that on the sixth day of April 19 82, I found (evidence) ~~to evidence~~ of the North 1/4 corner of Section 13, T 19 N, R 4 W Fourth Principal Meridian, and I re-established said corner according to the Wisconsin Statutes as shown and described hereon.

History of corner establishment since Original Government Survey
Blencoe was here in November of 1929, and set a stone. Harley Sime was here in December of 1968, Found Blencoe's stone, and set a 2" pipe over the stone.

Dated this 8th day of April 19 82.

Description of corner evidence found:

Found stone and pipe in place.



Harley A. Sime, Reg. Land Surveyor

County Surveyor, Monroe County, Wisconsin

Approved: **HARLEY A. SIME**

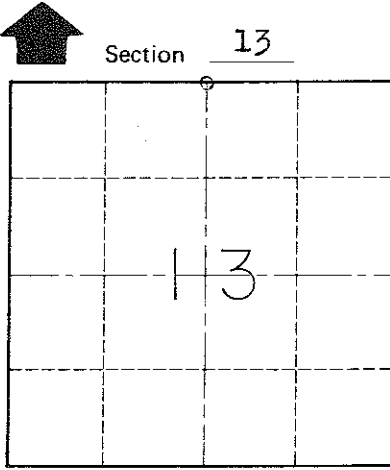
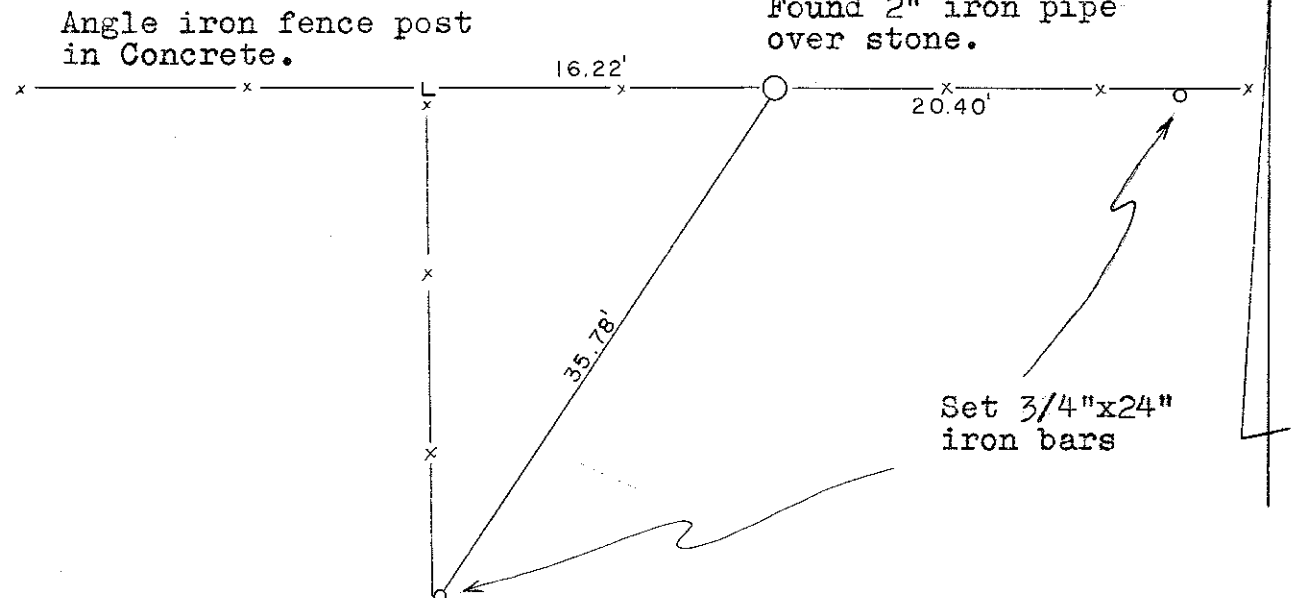
MONROE CO. SURVEYOR

Description of corner and witness monuments, references and accessories used to perpetuate the original or re-established location of this corner:

Witnesses to corner location:

Bryan Meyer

Gary Dechant



O = LOCATION CORNER
T 19 N R 4 W
WISCONSIN

COUNTY SURVEYOR FORM NO. 1

SURVEY CONTROL ORDER

Horizontal	_____
Vertical	_____

WISCONSIN COORDINATE SYSTEM

Corner	East (X)	North (Y)	Elevation (Z)	Zone
Control Sta. Name				

~~City, Village or~~ Town of Little Falls
County of Monroe