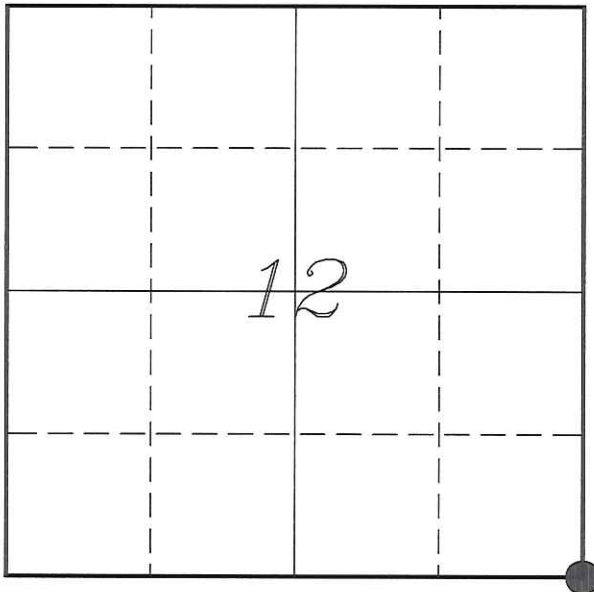


U. S. PUBLIC LAND SURVEY MONUMENT RECORD

SECTION 12, T19N, R4W, TOWN OF LITTLE FALLS
MONROE COUNTY, WISCONSIN



LOCATION OF LANDMARK

MONROE COUNTY COORDINATE SYSTEM	
Northing	447093.129
Easting	631517.331
Datum	NAD 1983 (1991)
Elevation	
Datum	
TYPE OF LANDMARK:	
Set 1 1/4" X 18" Iron Rod	
BEARINGS ARE REFERENCED TO:	
Monroe County Coordinates	

Witnesses: Laurence E Johns III
Larry Handschy

Date: 29 November 2013

Describe any record evidence, monument evidence, testimonial evidence or any other material evidence you considered and whether the monument was found or restored through acceptance of an obliterated evidence location.

No bearing trees of record were located.

I re-established this corner by doubling the distance from the '40' line fence and the previously established E 1/4 Corner of Section 13 and running a straight line between the SE & E 1/4 Corner of Section 13.

I found that this matches the line running between the NW and N 1/4 Corners of Section 13. This location also puts the previously established N 1/4 Corner within a foot of the split distance and also puts this corner within 3 feet of the distance from the E 1/4 Corner to the SE Corner.

The occupation at the '40' Corner to the South and the previously established 1/4 Corners support this corner as the best available evidence of the original government corner.

I placed a 1 1/4" Iron Rod due to the corner being in the pavement of Benton Road.

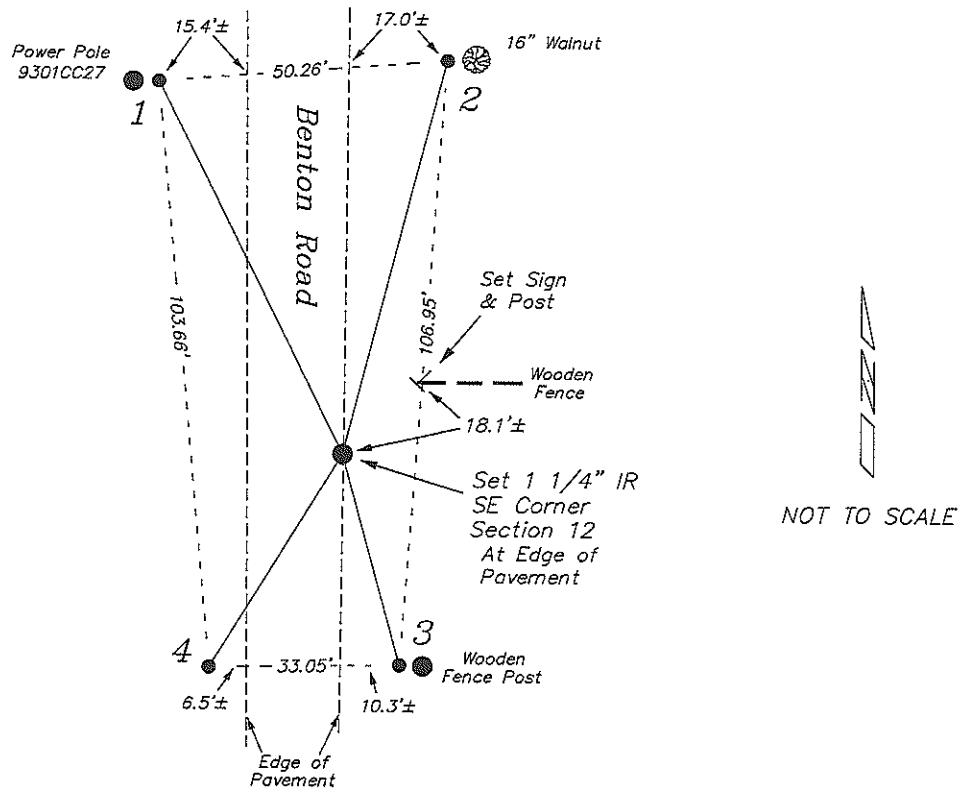
Describe or show any material discrepancy between the location of the restored corner and that of the corner previously restored or re-established.

James Freeman established this corner in December 1845.

I can find no record of anyone being at this corner since the original survey, even though all the quarter corners have been established in all four directions. Those tie sheets do not mention this corner.

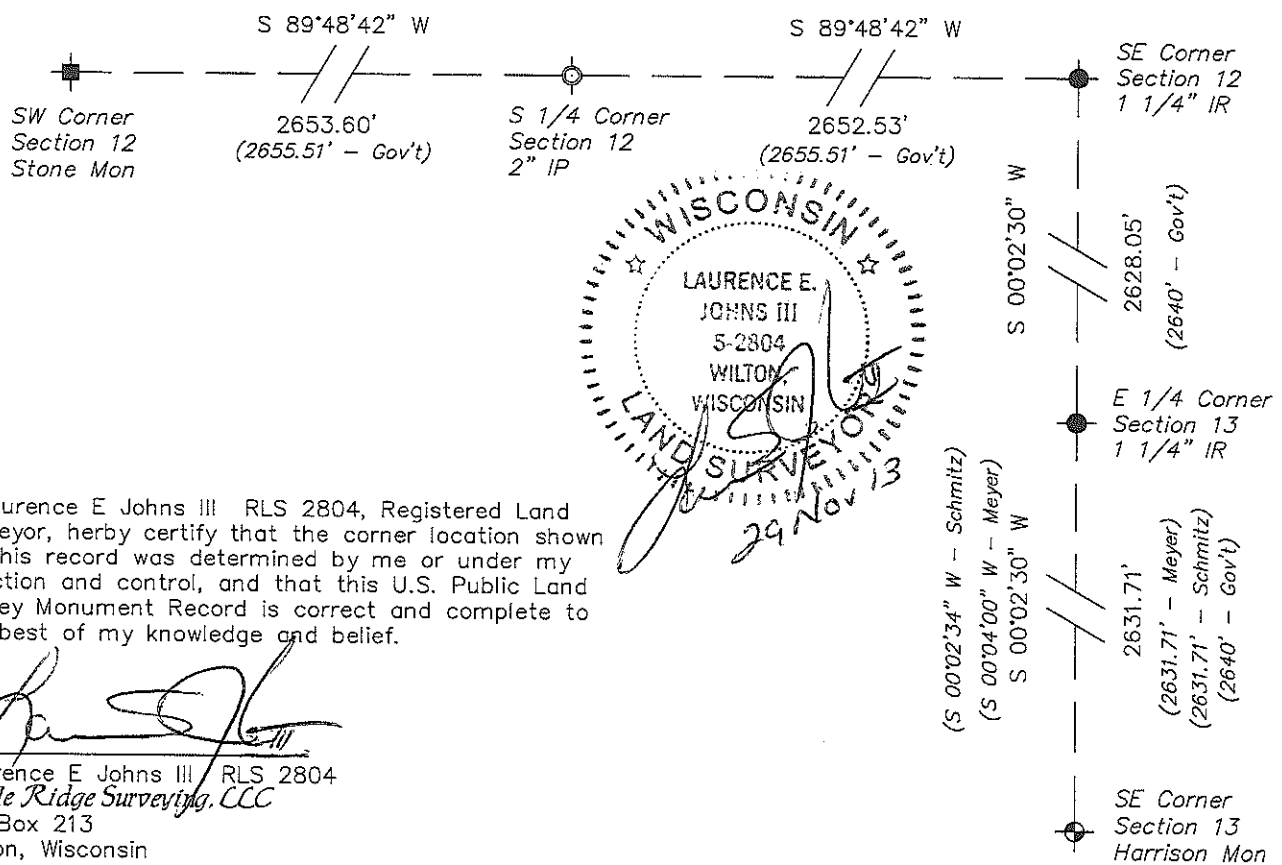
RECORD OF DURABLE WITNESS MONUMENTS

NO	DESCRIPTION	BEARING	DISTANCE
1	Set 3/4" x 18" Iron Rod 1' East of Power Pole 9301GG27	N 26°12'59" W	72.94'
2	Set 3/4" x 18" Iron Rod 1' West of a 16" Walnut	N 14°27'58" E	71.61'
3	Set 3/4" x 18" Iron Rod 1' West of a Wooden Fence Post	S 15°09'18" E	38.67'
4	Set 3/4" x 18" Iron Rod In Drainage Ditch	S 31°14'31" W	44.23'



PLAN VIEW DRAWING OF REFERENCE TIES

Map Showing Distance And Direction To Other Public Land Survey Corners Used For Re-Establishing The Corner



I, Laurence E Johns III RLS 2804, Registered Land Surveyor, hereby certify that the corner location shown on this record was determined by me or under my direction and control, and that this U.S. Public Land Survey Monument Record is correct and complete to the best of my knowledge and belief.

Laurence E Johns III RLS 2804
 Eagle Ridge Surveying, LLC
 PO Box 213
 Wilton, Wisconsin
 29 November 2013