

21904110000

I, Harley A. Sime, do hereby certify that on the twenty-third day of May 19 80, I found (evidence) ~~(no evidence)~~ of the Northwest corner of Section 13, T 19 N, R 4 W Fourth Principal Meridian, and I re-established said corner according to the Wisconsin Statutes as shown and described hereon.

Dated this 16th day of Jan. 19 81.

Harley A. Sime - R.L.S. 355

County Surveyor-Monroe County, Wisconsin.
Title

History of corner establishment since Original Government Survey

Keach set a stone here in December of 1902. Blencoe was here in November of 1929 and found Keach's stone. He replaced it with a new stone and set Keach's stone on the East side of it. Fred Holden found the original Description of corner evidence found: corner in November of 1904.

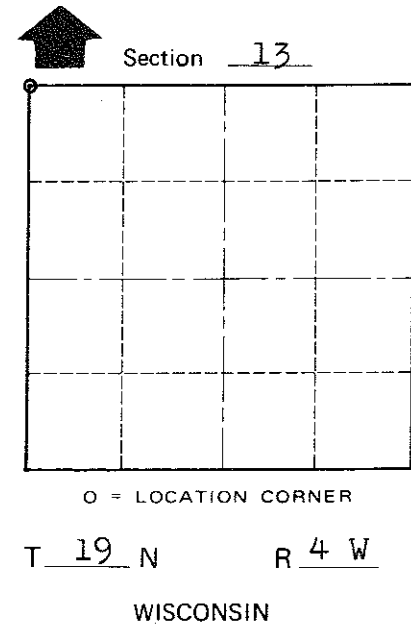
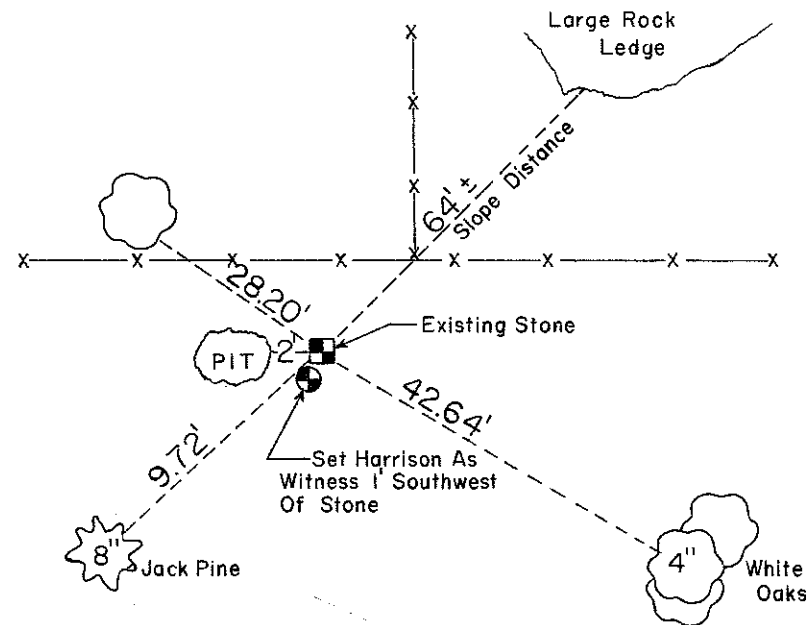
I found a stone and set a Harrison 1' Southwest of stone. The stone is the corner.

COUNTY SURVEYOR FORM NO. 1

Description of corner and witness monuments, references and accessories used to perpetuate the original or re-established location of this corner:

Witnesses to corner location:

- Bryan H. Meyer
- Todd Tormoen
- Charles Dade



**Approved: HARLEY A. SIME
MONROE CO. SURVEYOR**

SURVEY CONTROL ORDER

Horizontal	_____
Vertical	_____

WISCONSIN COORDINATE SYSTEM

Corner	East (X)	North (Y)	Elevation (Z)	Zone
Control Sta. Name				

~~City/Village of~~ Town of Little Falls
County of Monroe
Wisconsin