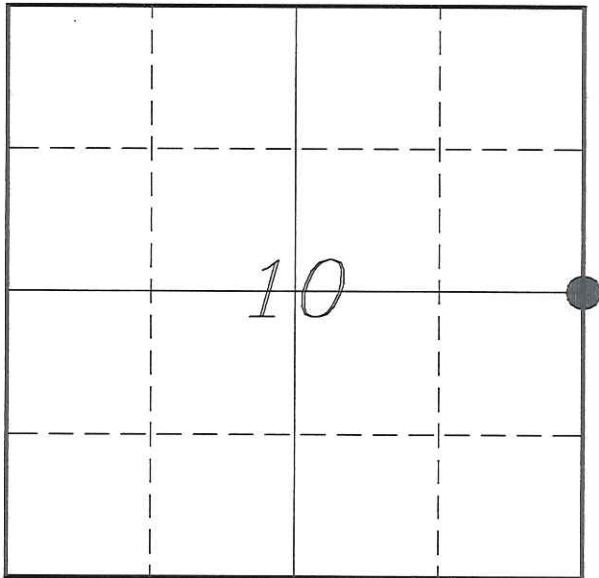


U. S. PUBLIC LAND SURVEY MONUMENT RECORD

SECTION 10, T19N, R4W, TOWN OF LITTLE FALLS
MONROE COUNTY, WISCONSIN



LOCATION OF LANDMARK

MONROE COUNTY COORDINATE SYSTEM	
Northing	449688.362
Easting	620988.585
Datum	NAD 1983 (1991)
Elevation	
Datum	
TYPE OF LANDMARK:	
Set Harrison Monument	
BEARINGS ARE REFERENCED TO:	
Monroe County Coordinates	

Witnesses: Laurence E Johns III
Al Hoff

Date: 6 November 2014

Describe any record evidence, monument evidence, testimonial evidence or any other material evidence you considered and whether the monument was found or restored through acceptance of an obliterated evidence location.

No bearing trees of record were located.

I found a pointed stone at the computed location for this corner. This stone is approximately 2 feet North of an un-maintained East/West fence. I also found a tree to the North with fence wire in it. It appears that there is an old fence corner at this location.

I verified the location of the stone based on Holden's survey. Many of the stones that he set have been recovered. Holden set the center of section 11 based on the intersection of 1/4 lines. Ray Hurlburt during a survey in Section 11 re-established the center of section using corners from Holden's survey.

I could not find Hurlburt's center, but computed its location based on his survey and found that this location is within a inch of the line between the stone I found and the recovered stone at the E 1/4 Corner of Section 11. Which verifies that this is the stone set by Holden.

Since Holden set this stone at the location of the original government corner, I accepted it as the true location of the original corner.

I found the stone to be loose and unstable, I decided to replace the stone with a Harrison Monument. The stone was placed next to the Harrison Monument.

Describe or show any material discrepancy between the location of the restored corner and that of the corner previously restored or re-established.

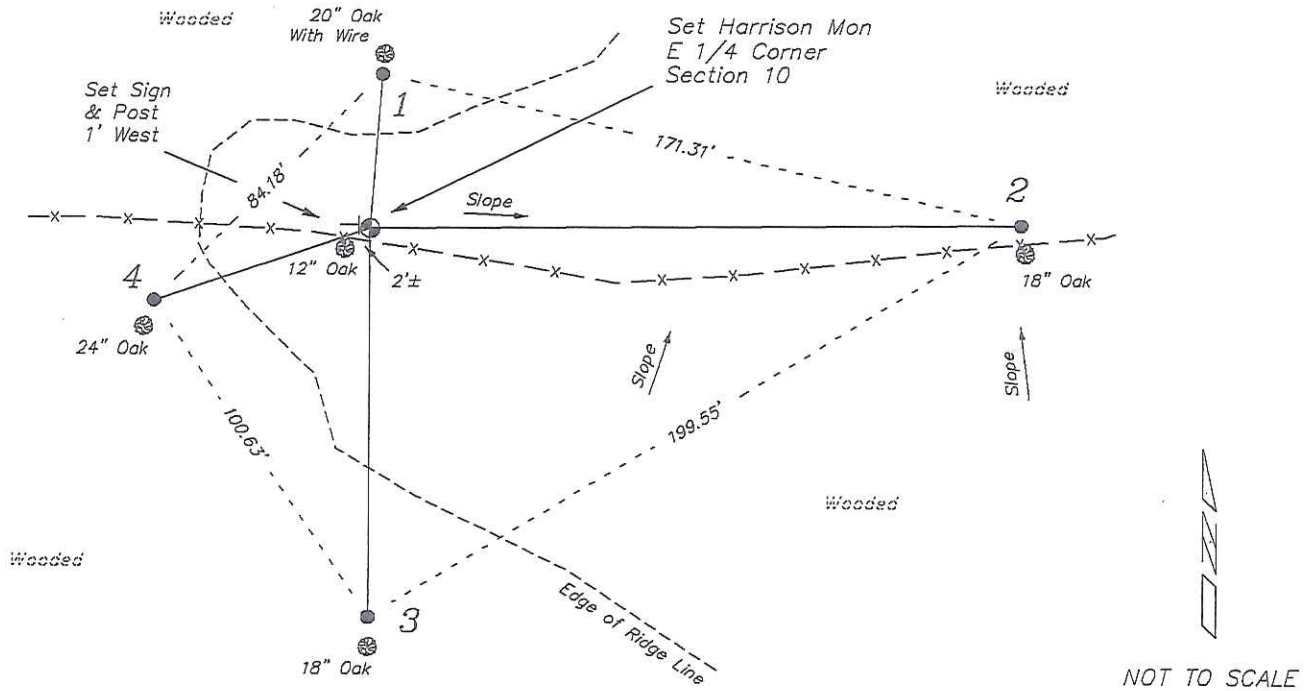
James D Turner established this corner in October 1847.

Fred Holden was at this corner, in November 1904, during a survey in Section 11. He shows that he found the original corner and place a stone at this corner. No dimensions of the stone are shown.

Dwayne Hefner performed several surveys in Section 10, from December 2001 to September 2002. He does not show this corner on his surveys, but he would have needed this corner to correctly perform his surveys.

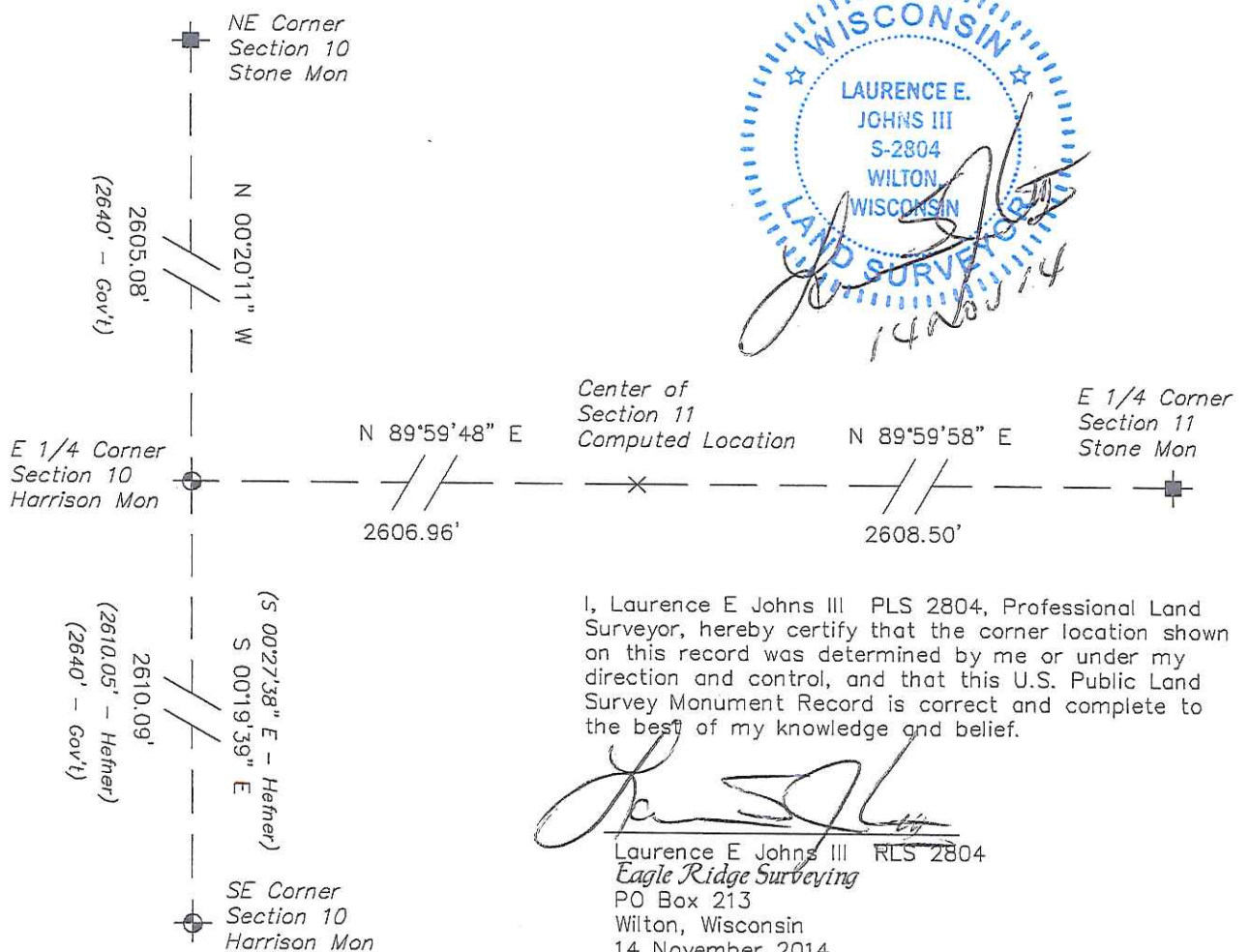
RECORD OF DURABLE WITNESS MONUMENTS

NO	DESCRIPTION	BEARING	DISTANCE
1	Set 3/4" x 18" Iron Rod 1' South of 20" Oak with Fence Wire	N 04°23'49" E	40.77'
2	Set 3/4" x 18" Iron Rod 2' North of a 18" Oak	N 89°25'36" E	169.96'
3	Set 3/4" x 18" Iron Rod 2' North of a 18" Oak	S 00°05'14" W	102.63'
4	Set 3/4" x 18" Iron Rod 2' North of a 24" Oak	S 71°16'32" W	59.36'




PLAN VIEW DRAWING OF REFERENCE TIES

Map Showing Distance And Direction To Other Public Land Survey Corners Used For Re-Establishing The Corner



I, Laurence E Johns III PLS 2804, Professional Land Surveyor, hereby certify that the corner location shown on this record was determined by me or under my direction and control, and that this U.S. Public Land Survey Monument Record is correct and complete to the best of my knowledge and belief.


 Laurence E Johns III RLS 2804
 Eagle Ridge Surveying
 PO Box 213
 Wilton, Wisconsin
 14 November 2014