

21904090030

I, Harley A. Sime, do hereby certify that on the 11th day of June 19 81, I found ~~(evidence)~~ (no evidence) of the SW corner SE $\frac{1}{4}$ -SW $\frac{1}{4}$ corner of Section 9, T 19 N, R 4 W Fourth Principal Meridian, and I re-established said corner according to the Wisconsin Statutes as shown and described hereon.

Dated this 27th day of August 19 81.

Harley A. Sime, R.L.S. 355

County Surveyor

Approved: ^{Title} **HARLEY A. SIME**
MONROE CO. SURVEYOR

Description of corner and witness monuments, references and accessories used to perpetuate the original or re-established location of this corner:

History of corner establishment since Original Government Survey
Schroeder was here in May of 1886.
Barnum was here in October 1871.

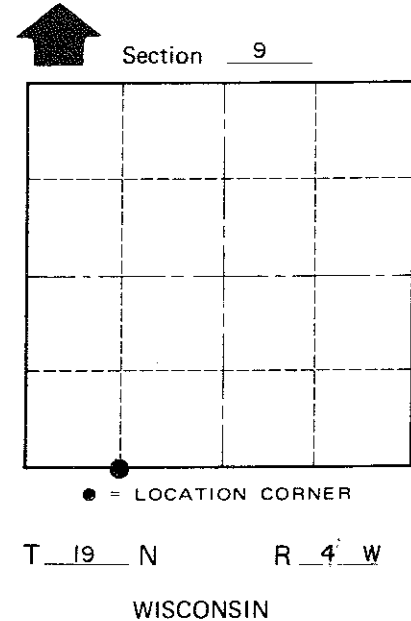
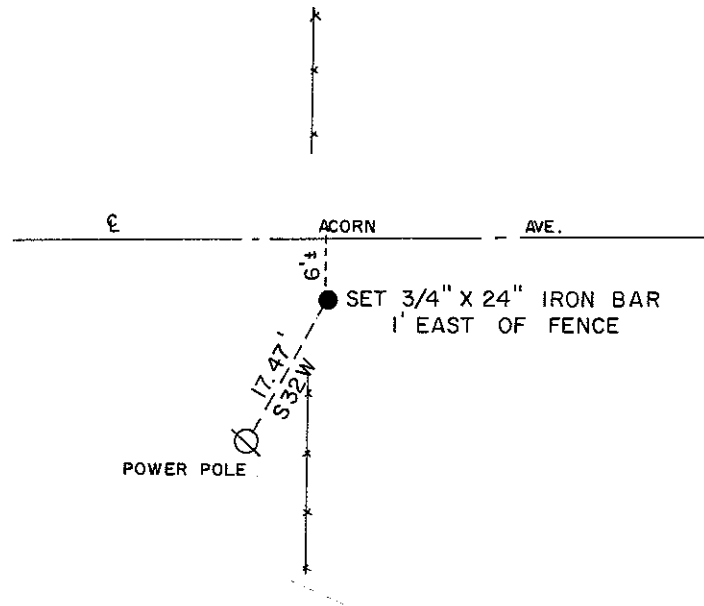
Description of corner evidence found:

Set on line and equidistant between the S $\frac{1}{4}$ corner and the SW corner of Section 9.

COUNTY SURVEYOR FORM NO. 1

Witnesses to corner location:

B. Meyer
C. Pietz



SURVEY CONTROL ORDER

Horizontal	_____
Vertical	_____

WISCONSIN COORDINATE SYSTEM

Corner	East (X)	North (Y)	Elevation (Z)	Zone
Control Sta. Name				

~~City Village or~~ Town Little Falls
County of Monroe