

48

**U.S. PUBLIC LAND CORNER
MAINTENANCE**

**Corner ID : S1/4 Sec. 9, T19N-R4W
21904090020**

<u>DATE</u>	<u>CREW</u>	<u>MONUMENT TYPE</u> -----
March 17, 2016	Zachariah P.Dechant Gary L. Dechant	Harrison top broke off, 18' south of Acorn & Basswood intersection, down 6"

References:

	<u>Bearing</u>	<u>Distance</u>
1) Set 3/4"x24", iron bar ,down 6", in yard	N28E	62.17'
2) Set 3/4"x24" iron bar, down 6", in yard, 8' NW of Plum	S60E	42.69'
3) Set 3/4"x24" iron bar, down 12" in field	S28W	59.52'
4) Set 3/4"x24" iron bar, down 6", 2' north of bridge sign (wt. Limit), 26' south & 14' east of SE corner of old church building.	N60W	73.85'

Harrison and reference markers set on straight lines



I, Harley A. Sime, do hereby certify that on the 11th day of June 1981, I found ~~(evidence)~~ (no evidence) of the S $\frac{1}{4}$ corner of Section 9, T 19 N, R 4 W Fourth Principal Meridian, and I re-established said corner according to the Wisconsin Statutes as shown and described hereon.

Dated this 27th day of August 1981.

Harley A. Sime, R.L.S. 355

County Surveyor

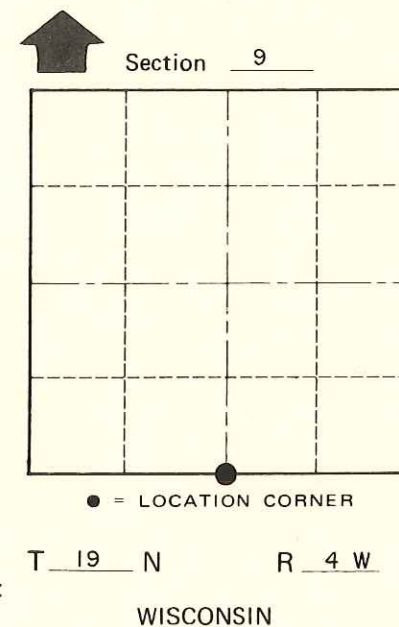
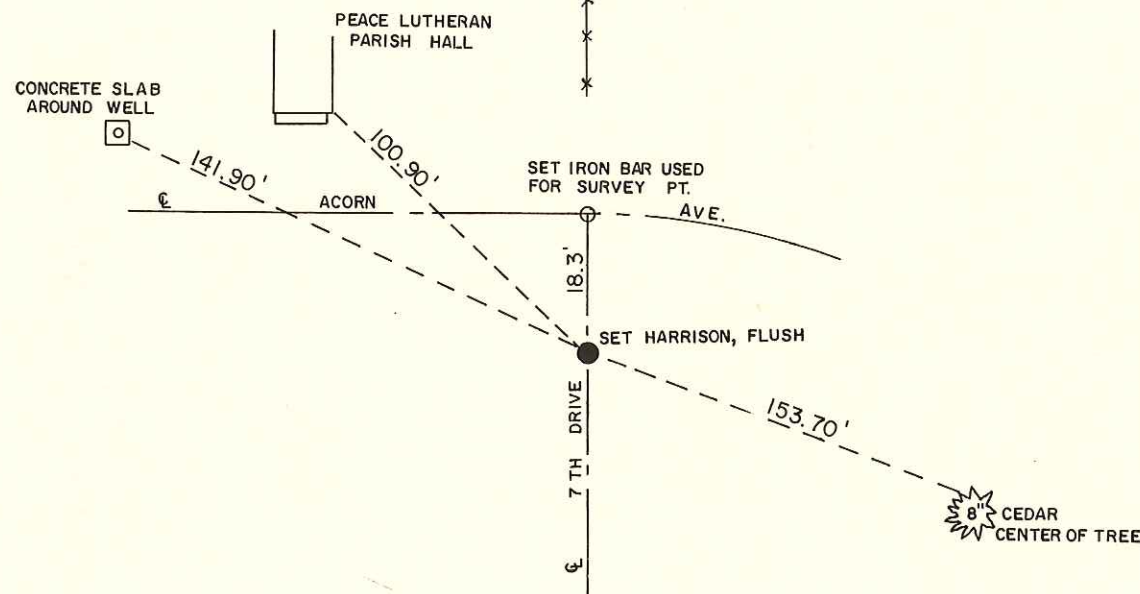
Approved: HARLEY A. SIME
 Title
MONROE CO. SURVEYOR

Description of corner and witness monuments, references and accessories used to perpetuate the original or re-established location of this corner:

Witnesses to corner location:

B. Meyer

C. Pietz



**See Reverse Side
For Maintenance**

SURVEY CONTROL ORDER

Horizontal	_____
Vertical	_____

WISCONSIN COORDINATE SYSTEM

Corner	East (X)	North (Y)	Elevation (Z)	Zone
Control Sta. Name				

~~City, Village or~~ Town Little Falls
 County of Monroe

COUNTY SURVEYOR FORM NO. 1