

47

**U.S. PUBLIC LAND CORNER
MAINTENANCE**

Corner ID : SE Sec. 9, T19N-R4W

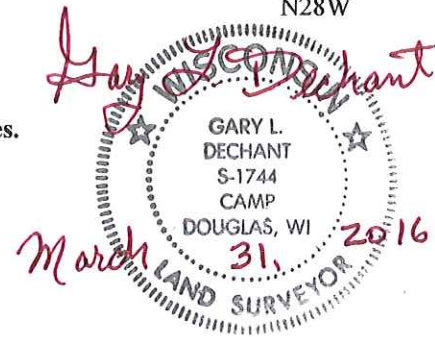
21904090000

DATE	CREW	MONUMENT TYPE -----
March 17, 2016	Zachariah P.Dechant Gary L. Dechant	Harrison intact, 132' west of Aaron Ave-Acorn Ave intersection down 2"

References:

	<u>Bearing</u>	<u>Distance</u>
1) Set 3/4"x24" hex iron bar, down 12" in field	N35E	44.91'
2) Set 3/4"x24" hex iron bar, down 6", in lilac bush	S28E	36.86'
3) Set 3/4"x24" hex iron bar, down 12" in field	S35W	40.68'
4) Set 3/4"x24" hex iron bar, down 12" in field	N28W	40.74'

Harrison and reference markers set on straight lines.



I, Harley A. Sime, do hereby certify that on the 18 day of June 19 76, I found (evidence) ~~#####~~ of the NW corner of Section 15, T 19 N, R 4W # Fourth Principal Meridian, and I re-established said corner according to the Wisconsin Statutes as shown and described hereon.

Dated this 7TH day of Feb. 19 78.

History of original corner establishment:
Holden was at this corner in 1908.

**See Reverse Side
For Maintenance**

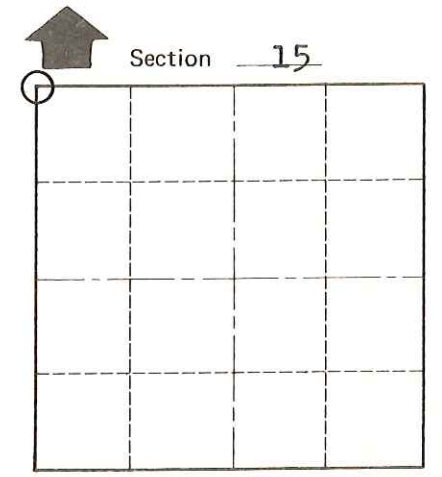
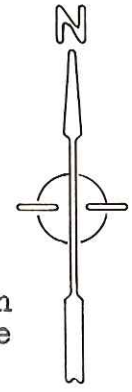
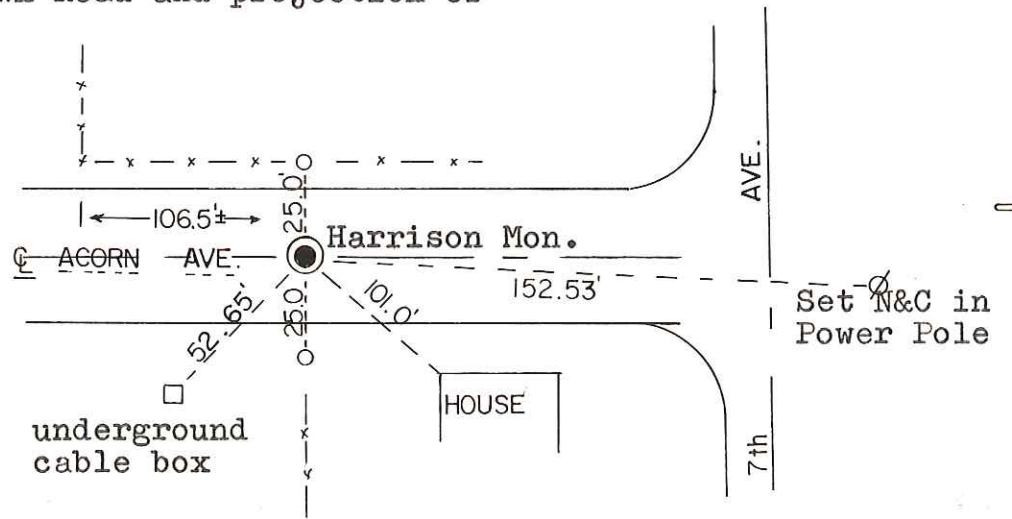
Description of corner evidence found:
Centerline and fenceline from south intersected fit govt. notes fairly well, so I used occupied property lines to establish corner. (No other evidence available.)

County Surveyor Approved: HARLEY A. SIME
Title MONROE CO. SURVEYOR

COUNTY SURVEYOR FORM NO. 1

Description of corner and witness monuments, references and accessories used to perpetuate the original or re-established location of this corner:
Set Harrison Monument in centerline of Town Road and projection of fenceline from south.

Witnesses to corner location:
Garold A. Sime, Crew Chief G.A. Sime
D. Dade
B. Meyer



Section 15
T 19 N R 4W #
WISCONSIN

o = Set 3/4" Iron Bar

SURVEY CONTROL ORDER

Horizontal	_____
Vertical	_____

WISCONSIN COORDINATE SYSTEM

Corner	East (X)	North (Y)	Elevation (Z)	Zone
Control Sta. Name				

~~#####~~ or Town Little Falls
County of Monroe