

CERTIFICATE

CERTIFIED LAND CORNER

No. 76-K

21904211010

I, Harley A. Sime, do hereby certify that on the 8 day of November 19 75, I found ~~the~~ (no evidence) of the C1/16SE 1/4 corner of Section 21, T 19 N, R 4 W, Fourth Principal Meridian, and I re-established said corner according to the Wisconsin Statutes as shown and described hereon.

History of original corner establishment:

Description of corner evidence found:

Dated this 17th day of March 19 77.

Set by Law after surveying out Section.

Approved: HARLEY A. SIME

County Surveyor

MONROE CO. SURVEYOR

Title

COUNTY SURVEYOR FORM NO. 1

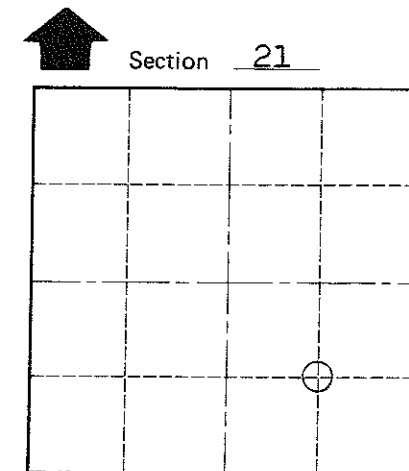
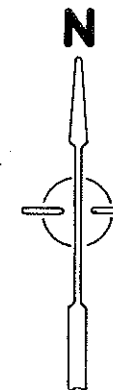
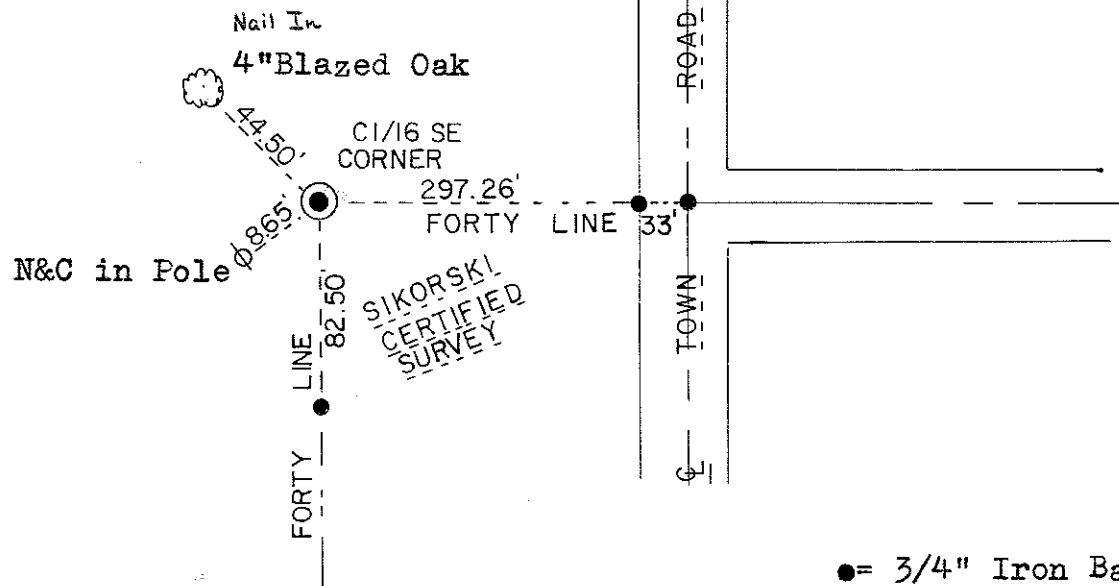
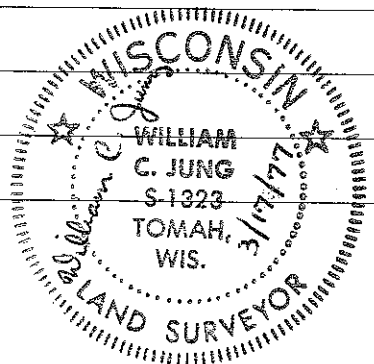
Description of corner and witness monuments, references and accessories used to perpetuate the original or re-established location of this corner:

Set 3/4"x 24" Iron Bar

Witnesses to corner location:

William C. Jung, Crew Chief

A. Lueck



O = LOCATION CORNER

T 19 N R 4 W

WISCONSIN

● = 3/4" Iron Bar

SURVEY CONTROL ORDER

Horizontal	_____
Vertical	_____

WISCONSIN COORDINATE SYSTEM

Corner	East (X)	North (Y)	Elevation (Z)	Zone
Control Sta. Name				

~~City/Town~~ or Town Little Falls

County of Monroe