

2190420000

I, Lawrence A. Feddersen, do hereby certify that on the 28th day of July 19 82, I found (evidence) (~~no evidence~~) of the NW corner of Section 28, T 19 N, R 4 W Fourth Principal Meridian, and I re-established said corner according to the Wisconsin Statutes as shown and described hereon.

History of corner establishment since Original Government Survey

Fred Holden was at this corner in June of 1908.

Description of corner evidence found:

Accepted fence corner as best available evidence as the corner as it fits other field evidence well.

Dated this 28th day of July 19 82.

Lawrence A. Feddersen

Registered Land Surveyor
Title

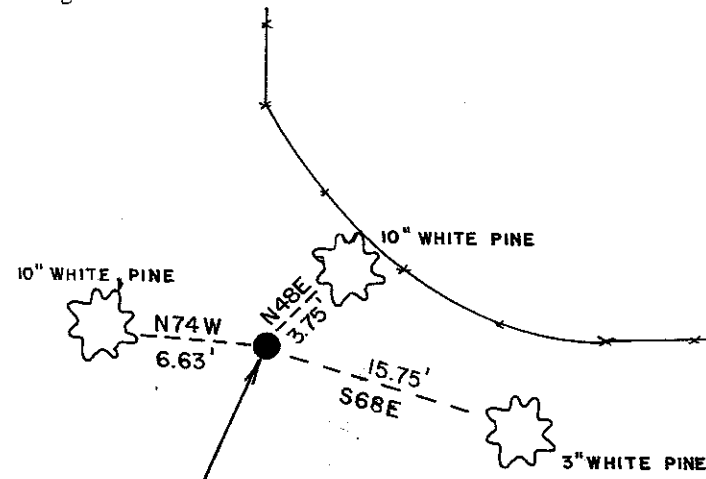
COUNTY SURVEYOR FORM NO. 1

Description of corner and witness monuments, references and accessories used to perpetuate the original or re-established location of this corner:

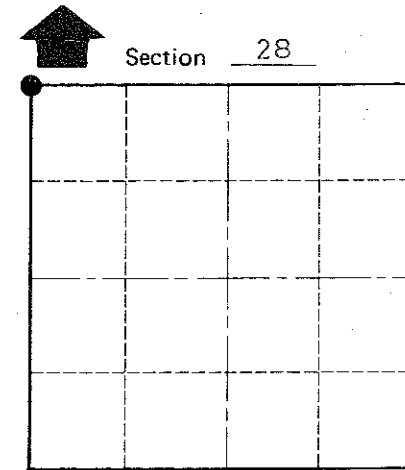
Witnesses to corner location:

Gary Dechant (D)

Thomas Mangene



Set Harrison Monument, up 4" ±.



● = LOCATION CORNER
T 19 N R 4 W
WISCONSIN

Approved: **HARLEY A. SIME**
MONROE CO. SURVEYOR

SURVEY CONTROL ORDER

Horizontal _____
Vertical _____

WISCONSIN COORDINATE SYSTEM

Corner	East (X)	North (Y)	Elevation (Z)	Zone
Control Sta. Name				

(All trees are double blazed with N&C on side of tree, distances to side of tree, trees also scribed)

~~City, Village or~~ Town Little Falls
County of Monroe