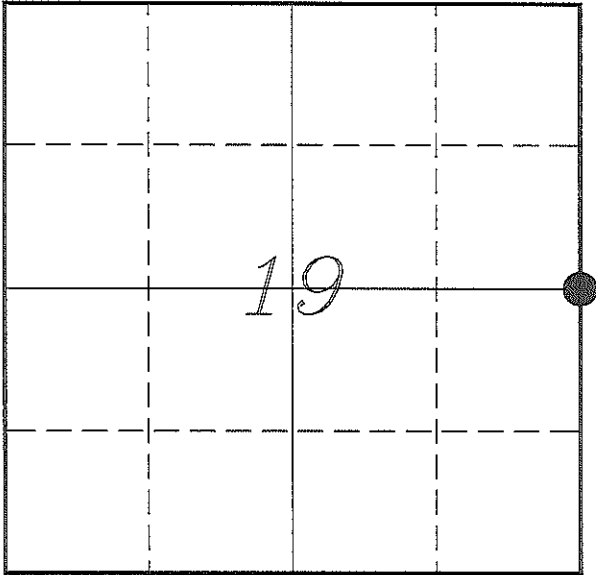


U. S. PUBLIC LAND SURVEY MONUMENT RECORD

**SECTION 19, T19N, R4W, TOWN OF LITTLE FALLS
MONROE COUNTY, WISCONSIN**



LOCATION OF LANDMARK

MONROE COUNTY COORDINATE SYSTEM	
Northing	439288.952
Easting	605173.480
Datum	NAD 1983 (1991)
Elevation	
Datum	
TYPE OF LANDMARK:	
Existing Harrison Monument	
BEARINGS ARE REFERENCED TO:	
Monroe County Coordinates	

Witnesses: Larry Handschy

Date: 2 December 2013

Describe any record evidence, monument evidence, testimonial evidence or any other material evidence you considered and whether the monument was found or restored through acceptance of an obliterated evidence location.

No bearing trees of record were located.

Found a Harrison Monument at a old 2-way fence corner approximately 100 feet East of a newer 3-way fence corner.

The location of the Harrison Monument fits occupation to the South and West to within 2 feet. It is also approximately 4 feet West of the straight line between the NE & SE Corners.

I accepted the location of the existing Harrison Monument at the fence corner as the best available evidence of the original government corner.

Describe or show any material discrepancy between the location of the restored corner and that of the corner previously restored or re-established.

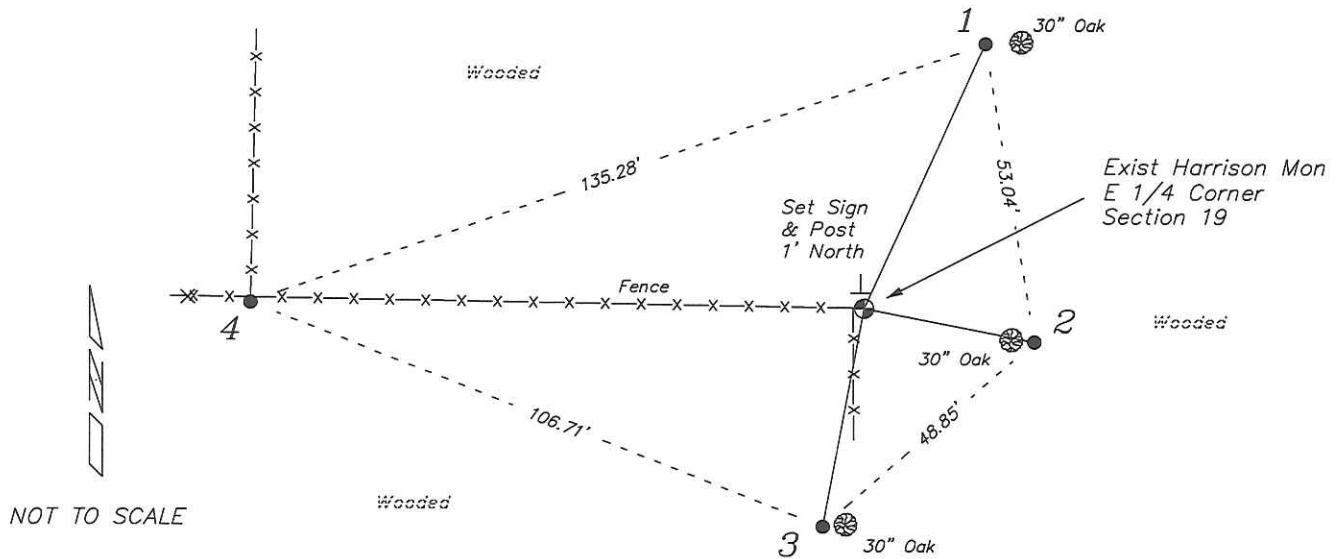
James Turner established this corner in October 1847.

Dwayne Hefner performed a survey in Section 20, in May 2002. He does not show this corner but would need it to correctly establish some of his corners.

#15

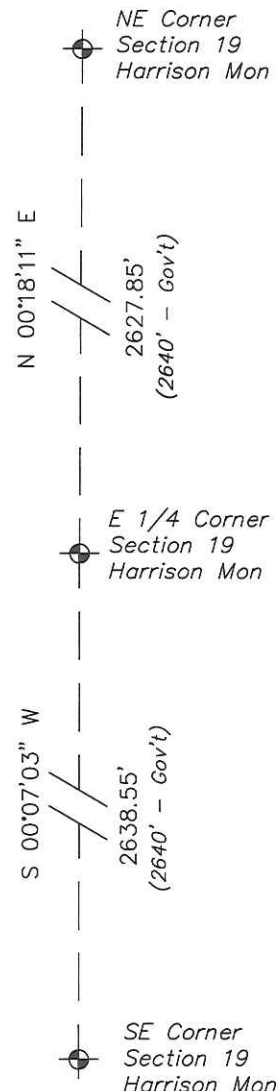
RECORD OF DURABLE WITNESS MONUMENTS

NO	DESCRIPTION	BEARING	DISTANCE
1	Set 3/4" x 18" Iron Rod 2' West of a 10" Oak	N 24°16'58" E	50.99'
2	Set 3/4" x 18" Iron Rod 1' East of a 6" Oak	S 78°46'50" E	30.13'
3	Set 3/4" x 18" Iron Rod In Fence Line	S 10°36'21" W	38.77'
4	Set 3/4" x 18" Iron Rod South Side of 3-Way Fence Corner	N 89°28'03" W	106.44'

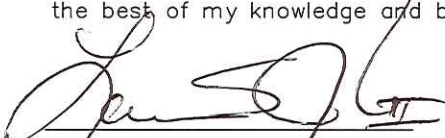


PLAN VIEW DRAWING OF REFERENCE TIES

Map Showing Distance And Direction To Other Public Land Survey
Corners Used For Re-Establishing The Corner



I, Laurence E Johns III RLS 2804, Registered Land Surveyor, hereby certify that the corner location shown on this record was determined by me or under my direction and control, and that this U.S. Public Land Survey Monument Record is correct and complete to the best of my knowledge and belief.


 Laurence E Johns III / RLS 2804
 Eagle Ridge Surveying, LLC
 PO Box 213
 Wilton, Wisconsin
 2 December 2013