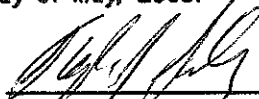


CERTIFICATE

I, Stephen J Solberg, do hereby certify that on the 9th day of May, 2005, I found ~~(evidence)~~ (no evidence) of the N 1/4 corner of Section 30, T.19N., R.4W., Fourth Principle Meridian, and I reestablished said corner according to the Wisconsin Statutes as shown and described hereon.

Dated this 9th day of May, 2005.


 Stephen J Solberg RLS 1846
 MAXWELL & ASSOCIATES
 LAND SURVEYING
 PO Box 213
 Wilton, WI 54656

CERTIFIED LAND CORNER

History of corner establishment since Original Government Survey

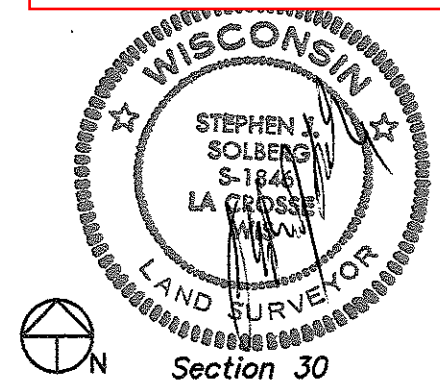
Fred Holden reestablished this corner in 1903.

Description of corner evidence found:

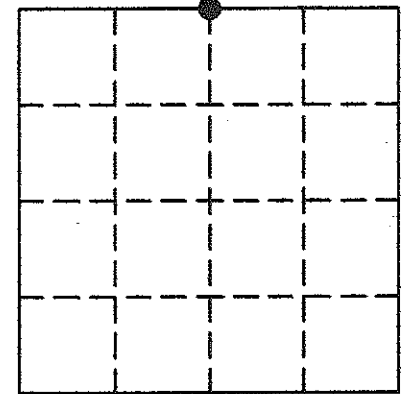
Could not find any physical evidence that pointed to the original corner. Could not find the stone that Fred Holden set at the center of the section after an extensive search. Accepted proration as the best evidence of the original corner. This location did fit with the fence further to the east.

No. 92

21904190020



Section 30



● = LOCATION CORNER
 T 19 N R 4 W
 WISCONSIN

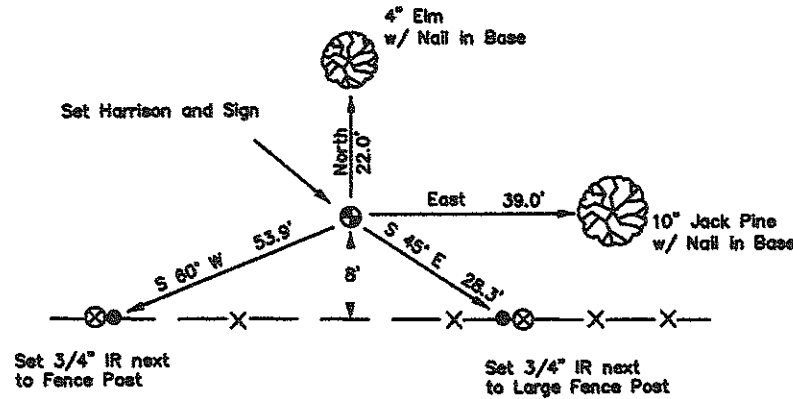
Description of corner and witness monuments, references and accessories used to perpetuate the original or reestablished location of this corner:

Witness to corner location:

Stephen J Solberg

 Laurence E Johns III

 Larry Handschy



Open Field

COUNTY SURVEYOR FORM NO. 1

SURVEY CONTROL ORDER

Horizontal
Vertical

WISCONSIN COORDINATE SYSTEM

Corner	East (X)	North (Y)	Elevation (Z)	Zone
Control Sta. Name				

~~City, Village or Town~~ Little Falls
 County of Monroe