


CERTIFICATE

I, Stephen J Solberg, do hereby certify that on the 9th day of May, 2005, I found (evidence) ~~(no evidence)~~ of the NE corner of Section 30, T.19N., R.4W., Fourth Principle Meridian, and I reestablished said corner according to the Wisconsin Statutes as shown and described hereon.

Dated this 9th day of May, 2005.


 Stephen J Solberg RLS 1846
 MAXWELL & ASSOCIATES
 LAND SURVEYING
 PO Box 213
 Wilton, WI 54656

CERTIFIED LAND CORNER

21904190000

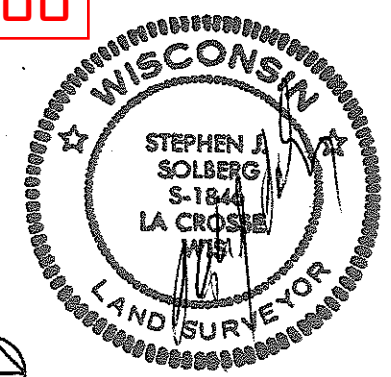
No. 91

History of corner establishment since Original Government Survey

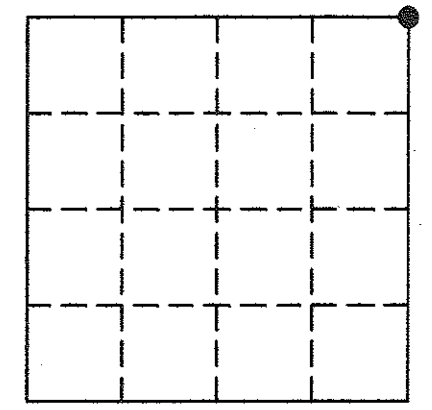
Fred Holden was at this corner in 1903.

Description of corner evidence found:

Accepted a corner post on a East/West fence line as the best available evidence of the original corner. This location fits real well with measurements and existing corners in Section 30 as compared to the original notes. Also fits well with the forty line to the North and with distances in Section 29 to the East.



Section 30



● = LOCATION CORNER
 T 19 N R 4 W
 WISCONSIN

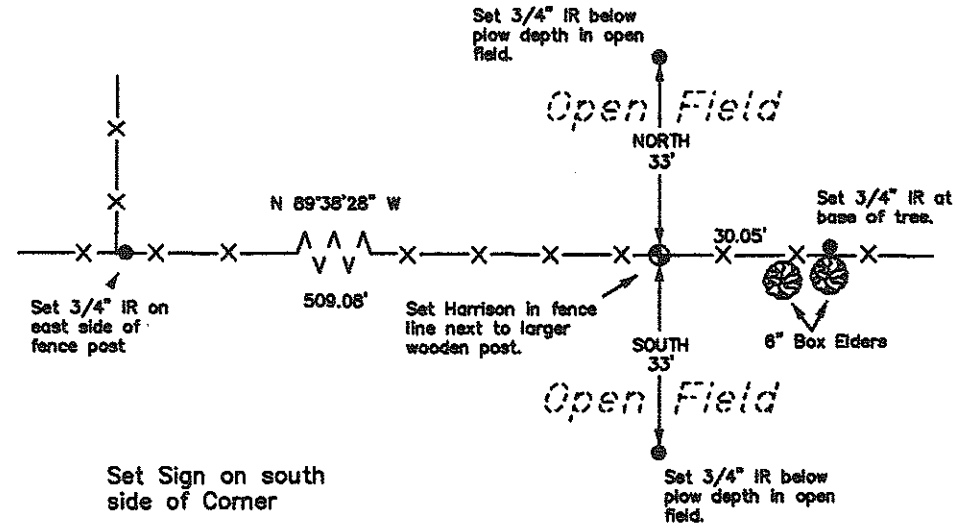
Description of corner and witness monuments, references and accessories used to perpetuate the original or reestablished location of this corner:

Witness to corner location:

 Stephen J Solberg

 Laurence E Johns III

 Larry Handschy



Set Sign on south side of Corner

SURVEY CONTROL ORDER

Horizontal
Vertical

WISCONSIN COORDINATE SYSTEM

Corner	East (X)	North (Y)	Elevation (Z)	Zone
Control Sta. Name				

~~City, Village or Town~~ Little Falls
 County of Monroe

COUNTY SURVEYOR FORM NO. 1