

I, Gary L. Dechant, do hereby certify that on the 2nd day of February 2000, I found ~~(evidence)~~ (no evidence) of the C/4 corner of Section 17, T 19 N, R 4 W Fourth Principal Meridian, and I re-established said corner according to the Wisconsin Statutes as shown and described hereon.

Dated this 5th day of February 2000

Gary L. Dechant

Registered Land Surveyor 1744

Title

History of corner establishment since Original Government Survey

There is good reason to believe that LaRue was here in 1897 or Kenyon before 1897. This assumption is based on Hamilton LaRue's survey notes of 1897.

21904172020

Description of corner evidence found:

The C/4 corner was set on line between the East and West quarter corners and on line with N/4 corner and occupied north south fence running along the west line of the SW/4-NE/4. This location fits LaRue's distances and other occupation in the NE/4 extremely well.

It falls 40'+ south of the occupied corner (fence corner remains).

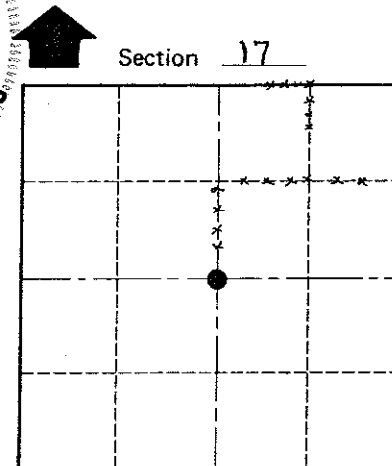
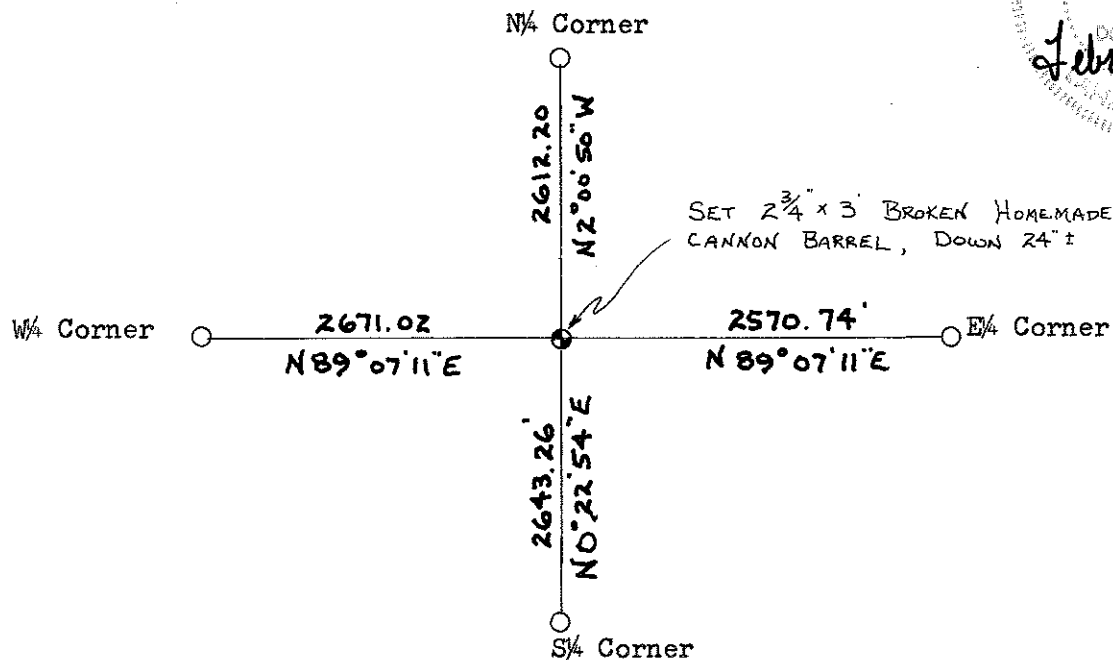
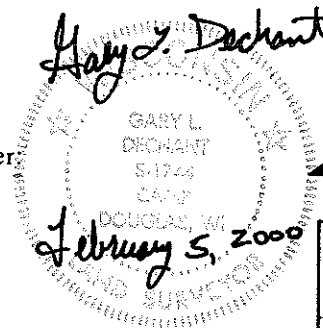
COUNTY SURVEYOR FORM NO. 1

Description of corner and witness monuments, references and accessories used to perpetuate the original or re-established location of this corner

Witnesses to corner location:

Zachariah P. Dechant

Gary L. Dechant



• = LOCATION CORNER

T 19 N R 4 W

WISCONSIN

SURVEY CONTROL ORDER

Horizontal _____

Vertical _____

WISCONSIN COORDINATE SYSTEM

| Corner | East (X) | North (Y) | Elevation (Z) | Zone |
|-------------------|----------|-----------|---------------|------|
| Control Sta. Name | | | | |

~~City, Village or Town~~ LITTLE FALLS

County of MONROE