

21904170000

I, Harley A. Sime, do hereby certify that on the 8 day of November 19 75, I found (evidence) (~~not a witness~~) of the NW corner of Section 21, T 19 N, R 4 W, Fourth Principal Meridian, and I re-established said corner according to the Wisconsin Statutes as shown and described hereon.  
 Dated this 17<sup>th</sup> day of March 19 77.

History of original corner establishment:

Holden was at this corner in 1908, Schroeder in 1893, and maybe Blencoe at a later date.

Note: 2/7/78 Stone on record here.

Description of corner evidence found:

Marten set an iron bar here in 1970 and tied it into the "Big Creek Valley Subdivision"

County Surveyor  
Title

Approved: **HARLEY A. SIME**  
**MONROE CO. SURVEYOR**

COUNTY SURVEYOR FORM NO. 1

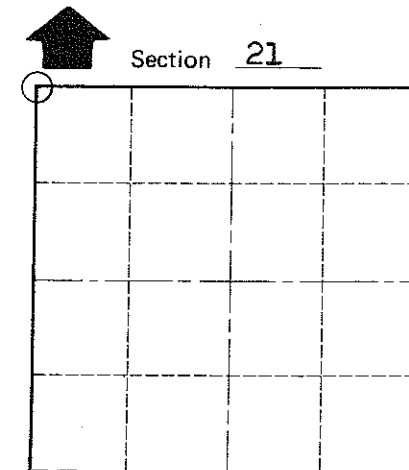
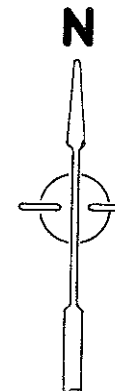
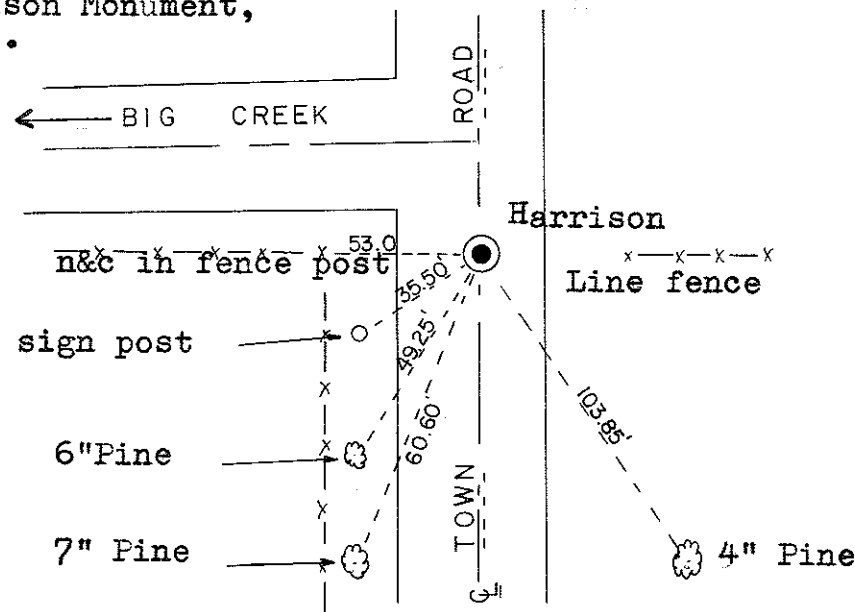
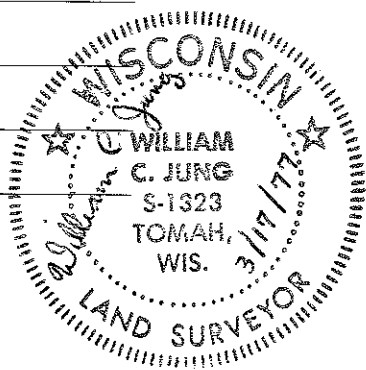
Description of corner and witness monuments, references and accessories used to perpetuate the original or re-established location of this corner:

Replaced 3/4" Iron bar set by Marten with a Harrison Monument, down 2", also found 1" iron bar 33.10 feet West.

Witnesses to corner location:

William C. Jung, Crew Chief

A. Lueck



O = LOCATION CORNER

T 19 N R 4 W  
WISCONSIN

All trees blazed and N&C's set.

SURVEY CONTROL ORDER

Horizontal	_____
Vertical	_____

WISCONSIN COORDINATE SYSTEM

Corner	East (X)	North (Y)	Elevation (Z)	Zone
Control Sta. Name				

~~#####~~ for Town Little Falls  
County of Monroe