

66

**U.S. PUBLIC LAND CORNER
MAINTENANCE**

Corner ID : S1/4 Sec. 15, T19N-R4W

21904150020

<u>DATE</u>	<u>CREW</u>	<u>MONUMENT TYPE -----</u>
March 17, 2016	Zachariah P.Dechant Gary L. Dechant	Harrison intact, 10' north of driveway, 323' west of STH "27" Beaver Ave intersection, down 4"

References:

	<u>Bearing</u>	<u>Distance</u>
1) Set 3/4"x24"hex iron bar ,down 10" in open area	N38E	42.39'
2) Set 1"x24" iron pipe, down 12" in field	S30E	43.43'
3) Set 3/4"x24" hex iron bar, down 12" in field	S15W	51.51'
4) Set 3/4"x24" hex iron bar, down 12" in filed	N29W	35.05'

Existing 1" iron pipes 33.00' north & 33.00' south
in fence lines



I, Harley A. Sime, do hereby certify that on the 18 day of June 19 76, I found (evidence) ~~#####~~ of the S 1/4 corner of Section 15, T 19 N, R 4W # Fourth Principal Meridian, and I re-established said corner according to the Wisconsin Statutes as shown and described hereon.

Dated this 7TH day of Feb. 19 78.

History of original corner establishment:

Holden was at this corner in 1911 and found existing iron Pipe

Description of corner evidence found:

Found existing Iron Pipe and replaced it with a Harrison Monument.

County Surveyor
Title

Approved: **HARLEY A. SIME**
MONROE CO. SURVEYOR

**See Reverse Side
For Maintenance**

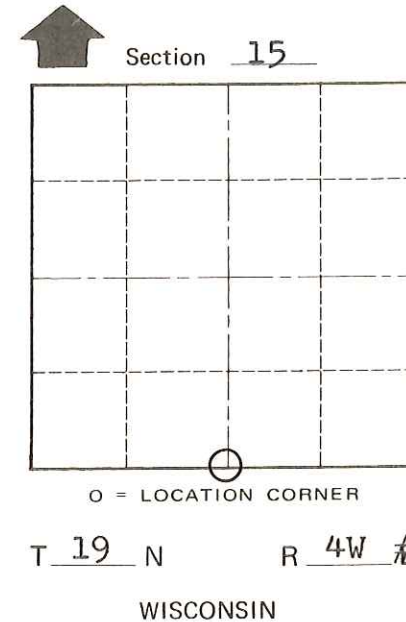
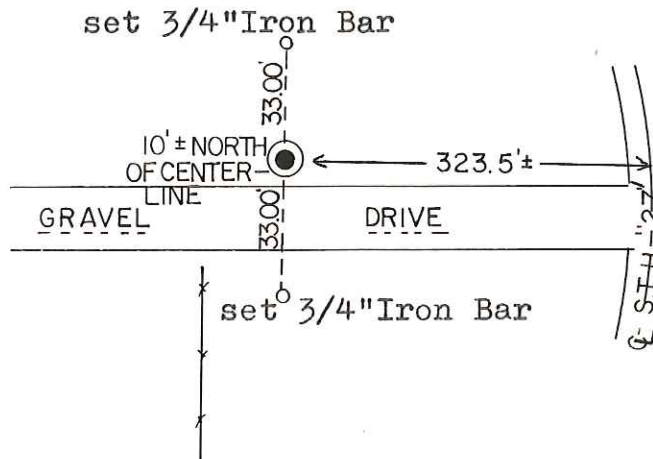
Description of corner and witness monuments, references and accessories used to perpetuate the original or re-established location of this corner:

Witnesses to corner location:

Garold A. Sime, Crew Chief *G.A. Sime*

D. Dade

B. Meyer



SURVEY CONTROL ORDER

Horizontal	_____
Vertical	_____

WISCONSIN COORDINATE SYSTEM

Corner	East (X)	North (Y)	Elevation (Z)	Zone
Control Sta. Name				

~~#####~~ or Town Little Falls

County of Monroe

COUNTY SURVEYOR FORM NO. 1