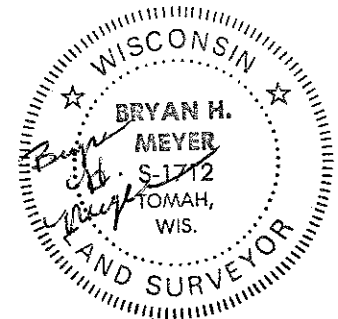


21904262000



I, Harley A. Sime, do hereby certify that on the sixth day of April 1982, I found (evidence) of the West 1/4 corner of Section 25, T 19 N, R 4 W Fourth Principal Meridian, and I re-established said corner according to the Wisconsin Statutes as shown and described hereon.

Dated this 19th day of April 1982.

Harley A. Sime - R.L.S. 355

County Surveyor-Monroe County, Wisconsin

Approved: ^{Title} **HARLEY A. SIME**
MONROE CO. SURVEYOR

Description of corner and witness monuments, references and accessories used to perpetuate the original or re-established location of this corner:

Witnesses to corner location:

Bryan Meyer

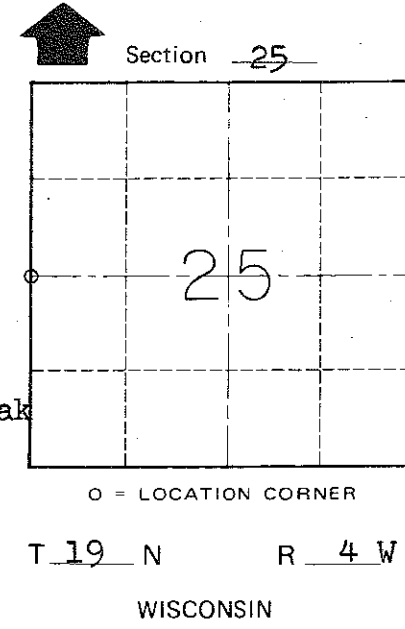
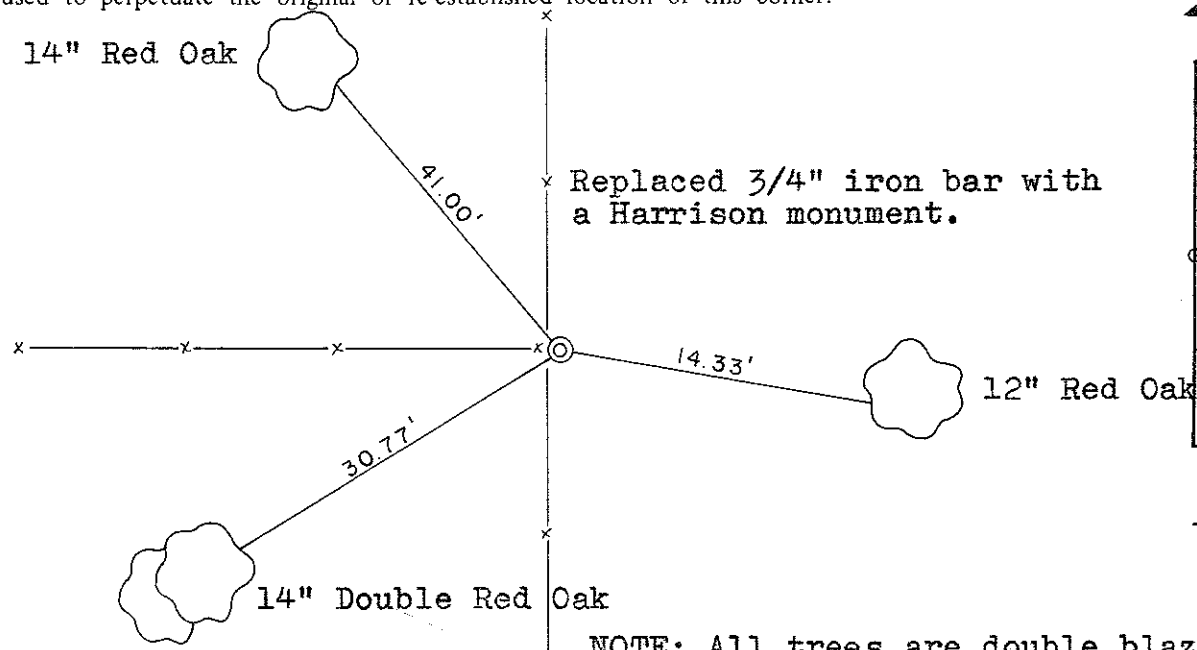
Gary Dechant

History of corner establishment since Original Government Survey

Fred Zietlow was here in April of 1971 and set a 3/4" iron bar.

Description of corner evidence found:

Found Zietlow's 3/4" iron bar and replaced it with a Harrison monument.



NOTE: All trees are double blazed with blazes facing corner. Trees are also hacked in the side with a nail set in the hack. Distances are to the nails.

COUNTY SURVEYOR FORM NO. 1

SURVEY CONTROL ORDER

Horizontal	_____
Vertical	_____

WISCONSIN COORDINATE SYSTEM

Corner	East (X)	North (Y)	Elevation (Z)	Zone
Control Sta. Name				

Town of Little Falls

County of Monroe