

CERTIFICATE

CERTIFIED LAND CORNER

No. 102

21904250020

I, Bryan H. Meyer, do hereby certify that on the 2nd day of May 1984, I found (evidence) ~~removed~~ of the South 1/4 corner of Section 25, T 19 N, R 4 W Fourth Principal Meridian, and I re-established said corner according to the Wisconsin Statutes as shown and described hereon.

Dated this 6th day of Dec. 1984.

Bryan H. Meyer

Deputy County Surveyor

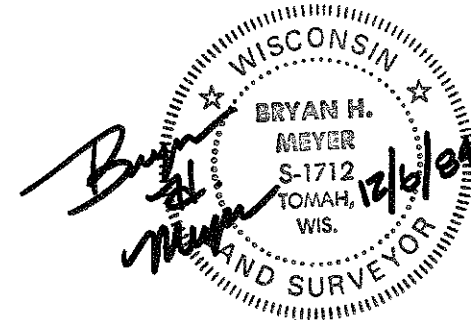
Title

History of corner establishment since Original Government Survey

Hamilton LaRue was here in April of 1897. Fred Zietlow was here in April of 1971 and found a stone at the corner. He set an angle iron along side the stone.

Description of corner evidence found:

I found a 3"x12"x22" stone, up 6"+ at a point in the fence where the wire ties and the fence post type changes. I also found an angle iron along side the stone. I accepted the stone as the corner.



COUNTY SURVEYOR FORM NO. 1

Description of corner and witness monuments, references and accessories used to perpetuate the original or re-established location of this corner:

Crew: Meyer, Jung

Date: May 2, 1984

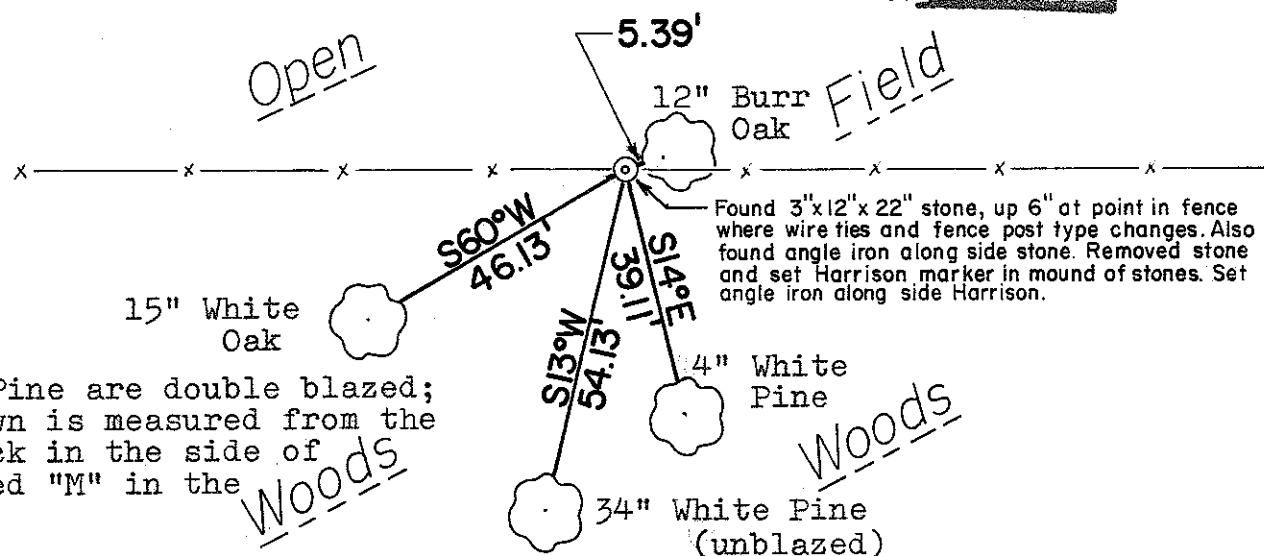
Weather: Overcast, Calm, 50°±

Witnesses to corner location:

Bryan H. Meyer

Bill Jung

SIGN PLACED 4-5-89 A.J.



Found 3"x12"x22" stone, up 6" at point in fence where wire ties and fence post type changes. Also found angle iron along side stone. Removed stone and set Harrison marker in mound of stones. Set angle iron along side Harrison.

NOTE: Both Oaks and the small Pine are double blazed; each of the four distances shown is measured from the Harrison to a nail set in a hack in the side of each tree. Both Oaks are scribed "M" in the upper blaze.

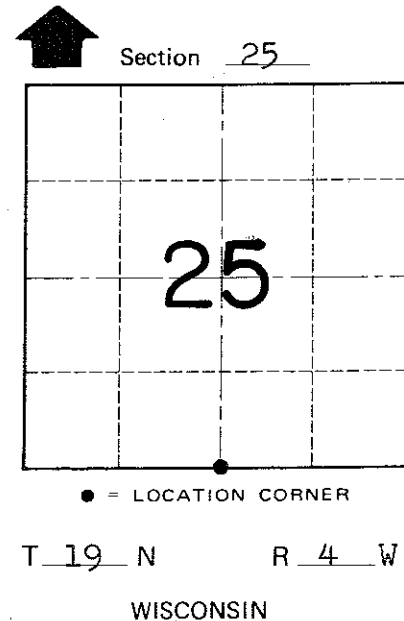
SURVEY CONTROL ORDER

Horizontal \_\_\_\_\_  
Vertical \_\_\_\_\_

(The bearings shown are hand compass bearings)

WISCONSIN COORDINATE SYSTEM

Corner	East (X)	North (Y)	Elevation (Z)	Zone
Control Sta. Name				



~~Little Falls~~ Town of Little Falls  
County of Monroe