

21904242020

I, Harley A. Sime, do hereby certify that on the sixth day of April 19 82, I found (evidence) of the Center $\frac{1}{4}$ corner of Section 24, T 19 N, R 4W Fourth Principal Meridian, and I re-established said corner according to the Wisconsin Statutes as shown and described hereon.
 Dated this 8th day of April 19 82.

History of corner establishment since Original Government Survey

Schroeder was here in May of 1886. H.A. Sime was here in January of 1963 and set a 1" iron pipe off Schroeder's B.T.

Description of corner evidence found:

Found 1" iron pipe.

Harley A. Sime, Reg. Land Surveyor

County Surveyor-Monroe County, Wisconsin

Title

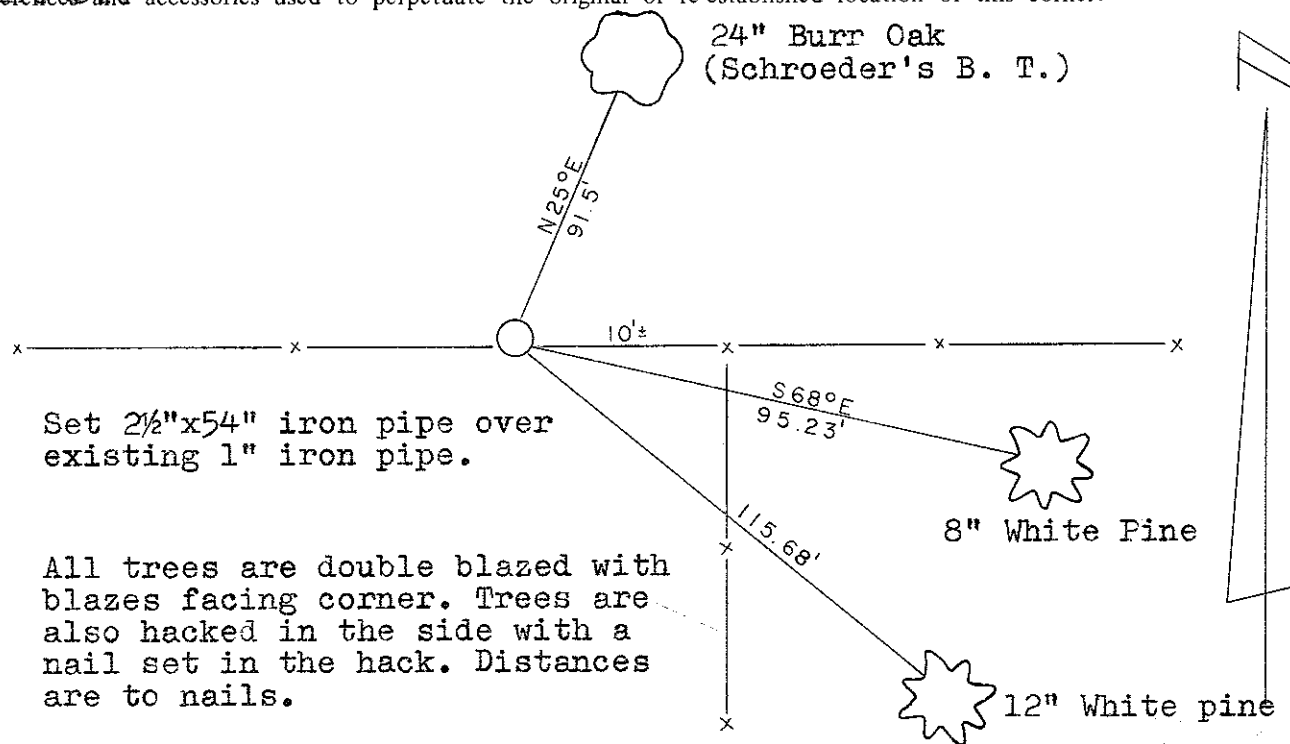
Approved: **HARLEY A. SIME**
MONROE CO. SURVEYOR

Description of corner and witness monuments, references and accessories used to perpetuate the original or re-established location of this corner:

Witnesses to corner location:

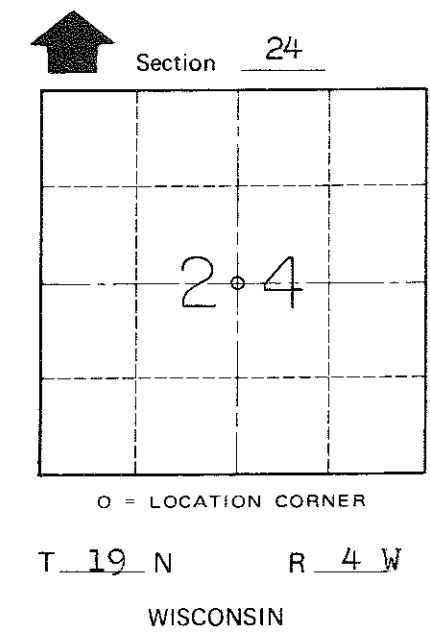
Bryan Meyer

Gary Dechant



Set 2 1/2"x54" iron pipe over existing 1" iron pipe.

All trees are double blazed with blazes facing corner. Trees are also hacked in the side with a nail set in the hack. Distances are to nails.



SURVEY CONTROL ORDER

| | |
|------------|-------|
| Horizontal | _____ |
| Vertical | _____ |

WISCONSIN COORDINATE SYSTEM

| Corner | East (X) | North (Y) | Elevation (Z) | Zone |
|-------------------|----------|-----------|---------------|------|
| Control Sta. Name | | | | |

~~City, Village~~ Town of Little Falls

County of Monroe

COUNTY SURVEYOR FORM NO. 1