

21904242000

I, William C. Jung, do hereby certify that on the 8th day of June 1979, I found (evidence) ~~(no evidence)~~ of the East 1/4 corner of Section 24, T19 N, R 4 W Fourth Principal Meridian, and I re-established said corner according to the Wisconsin Statutes as shown and described hereon.

Dated this 2nd day of Feb. 1981

*William C. Jung*

William C. Jung, R.L.S. 1323  
Title

History of corner establishment since Original Government Survey

Schroeder (?) was at this corner in May of 1886. Duane Marten set an iron bar at this corner in May of 1973.

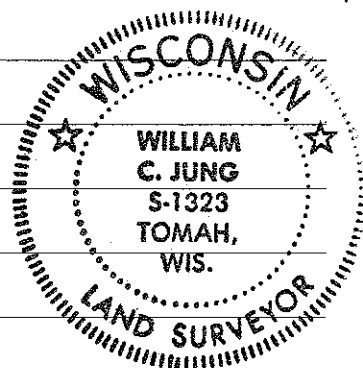
Description of corner evidence found:

Found Marten's iron bar, removed it and replaced it with a Harrison marker. I accepted this occupied corner as the best available evidence of the original government corner.

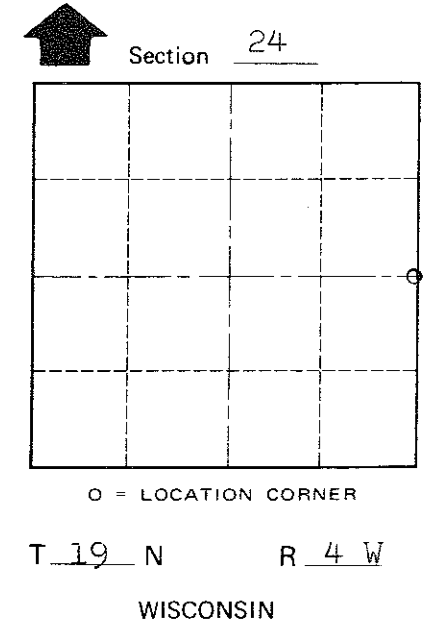
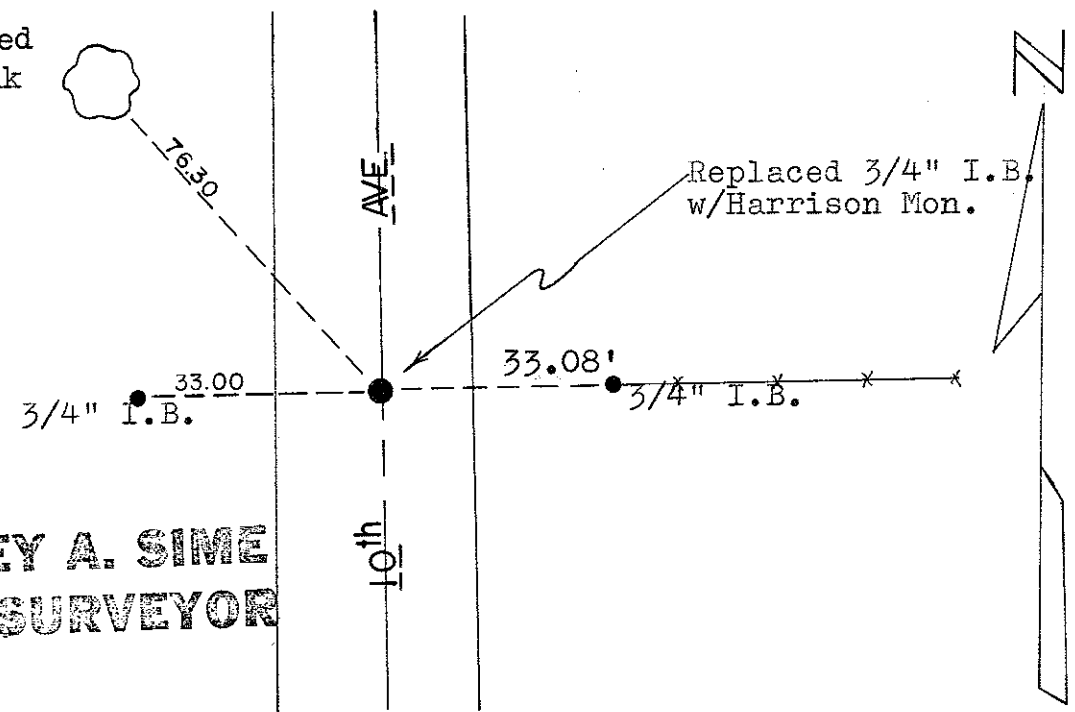
Description of corner and witness monuments, references and accessories used to perpetuate the original or re-established location of this corner:

Witnesses to corner location:

W. Jung  
C. Pietz  
K. T. Webb



Double blazed  
6" Black Oak  
w/ N&C set



Approved: **HARLEY A. SIME**  
**MONROE CO. SURVEYOR**

SURVEY CONTROL ORDER

Horizontal \_\_\_\_\_  
Vertical \_\_\_\_\_

WISCONSIN COORDINATE SYSTEM

Corner	East (X)	North (Y)	Elevation (Z)	Zone
Control Sta. Name				

City, Village or Town Little Falls  
County of Monroe  
Wisconsin

COUNTY SURVEYOR FORM NO. 1