

81

U.S. PUBLIC LAND CORNER MAINTENANCE

Corner ID : NE Sec.25, T19N-R4W

21904240000

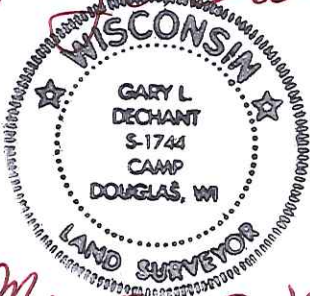
<u>DATE</u>	<u>CREW</u>	<u>MONUMENT TYPE</u> -----
May 3, 2014	Zachariah P.Dechant Gary L. Dechant	Existing Harrison Monument at intersection Camp Ave and Benton Road. Iron bar reference markers destroyed.

References:

	<u>Bearing</u>	<u>Distance</u>
1) Set 3/4"x24" hex iron bar, 3' SE 12" Red Pine, down 6"	N51E	79.07'
2) Set 3/4"x24" hex iron bar, down 8"	S38E	59.16'
3) Set 3/4"x24" hex iron bar, down 6"	S51W	58.84'
4) Set 3/4"x24" hex iron bar, 8' SE 6" Spruce in yard ,down 6"	N38W	45.62'

COORDINATES:

NOTE: Reference markers and Harrison
set on straight lines

Gary L. Dechant

May 3, 2014

21904240000

I, William C. Jung, do hereby certify that on the 8th day of June 1979, I found (evidence) ~~(no evidence)~~ of the N. E. corner of Section 25, T 19 N, R 4 W Fourth Principal Meridian, and I re-established said corner according to the Wisconsin Statutes as shown and described hereon.

Dated this 2nd day of Feb. 1981.

William C. Jung

William C. Jung, R.L.S. 1323
Title

History of corner establishment since Original Government Survey

(?)Schroeder was at this corner in May of 1886. Duane Marten set a R.R. spike at this corner in April of 1971 and used it in subsequent surveys in neighboring sections.

Description of corner evidence found:

Found Marten's R.R. spike, removed it and replaced it with a Harrison marker. I accepted this occupied corner as the best available evidence of the original government survey.

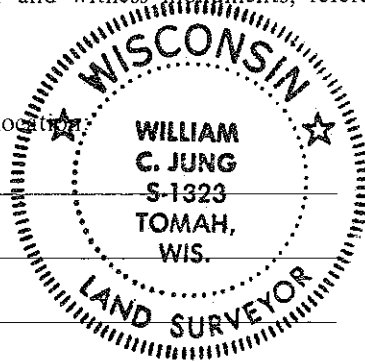
Description of corner and witness monuments, references and accessories used to perpetuate the original or re-established location of this corner:

Witnesses to corner location:

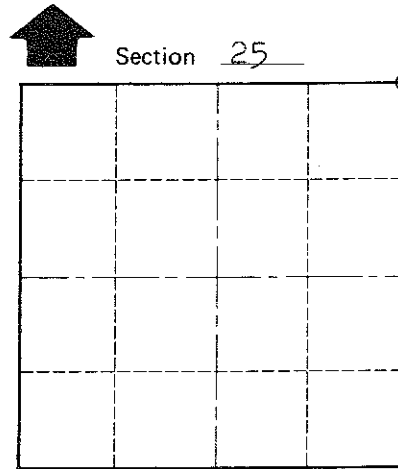
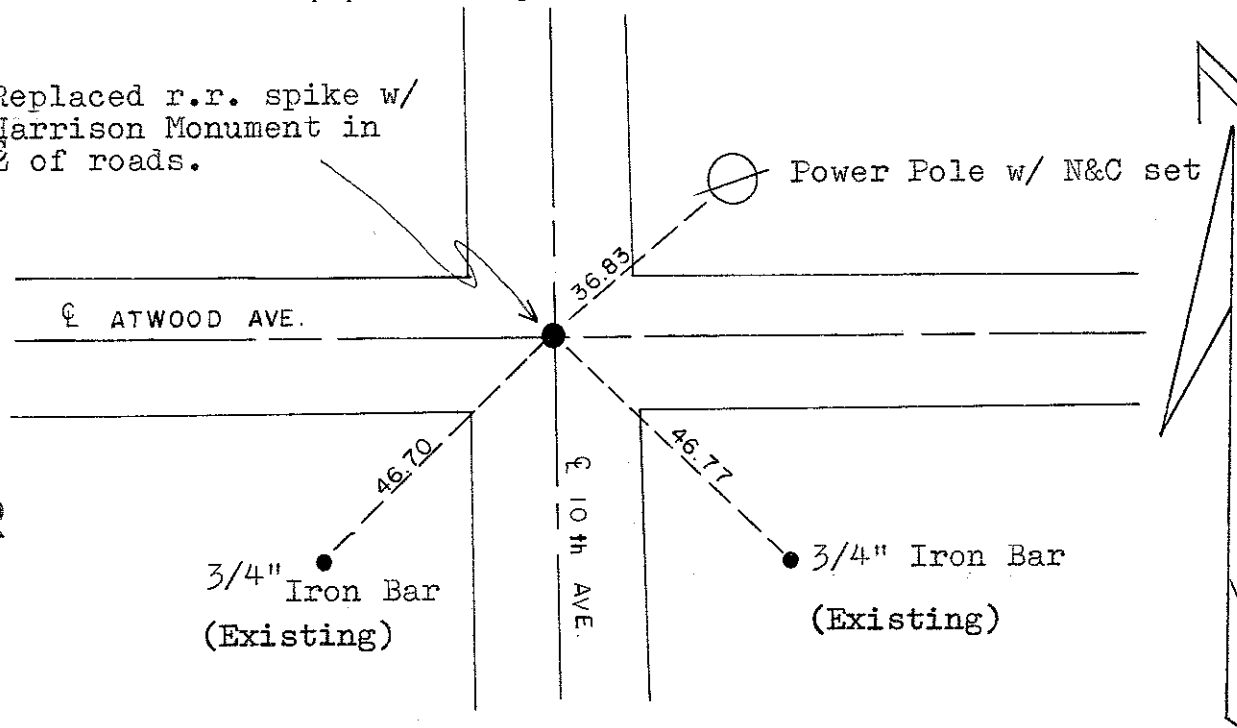
W. Jung

C. Pietz

K.T. Webb



Replaced r.r. spike w/ Harrison Monument in E of roads.



O = LOCATION CORNER

T 19 N R 4 W

WISCONSIN

Approved: **HARLEY A. SIME**
MONROE CO. SURVEYOR

SURVEY CONTROL ORDER

Horizontal _____
Vertical _____

WISCONSIN COORDINATE SYSTEM

Corner	East (X)	North (Y)	Elevation (Z)	Zone
Control Sta. Name				

City, Village or Town Little Falls

County of Monroe

Wisconsin

COUNTY SURVEYOR FORM NO. 1