

21904232000

I, Harley A. Sime, do hereby certify that on the twenty-third day of May 1980, I found (evidence) ~~(evidence)~~ of the West 1/4 corner of Section 24, T 19 N, R 4 W Fourth Principal Meridian, and I re-established said corner according to the Wisconsin Statutes as shown and described hereon.

History of corner establishment since Original Government Survey

(?) Schroeder was here in May of 1886. Holden was here in April of 1910. I was here in January of 1963 and set an iron pipe.

Description of corner evidence found:

I replaced my iron pipe with a Harrison monument.

Dated this 16th day of Jan. 1981.

Harley A. Sime-R.L.S. 355

County Surveyor Monroe County, Wisconsin.

Title

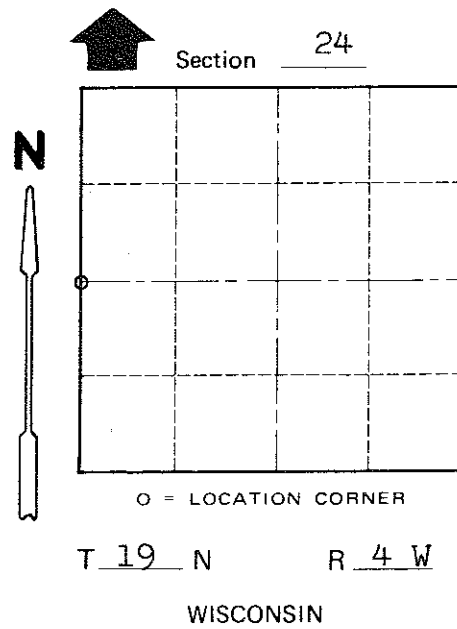
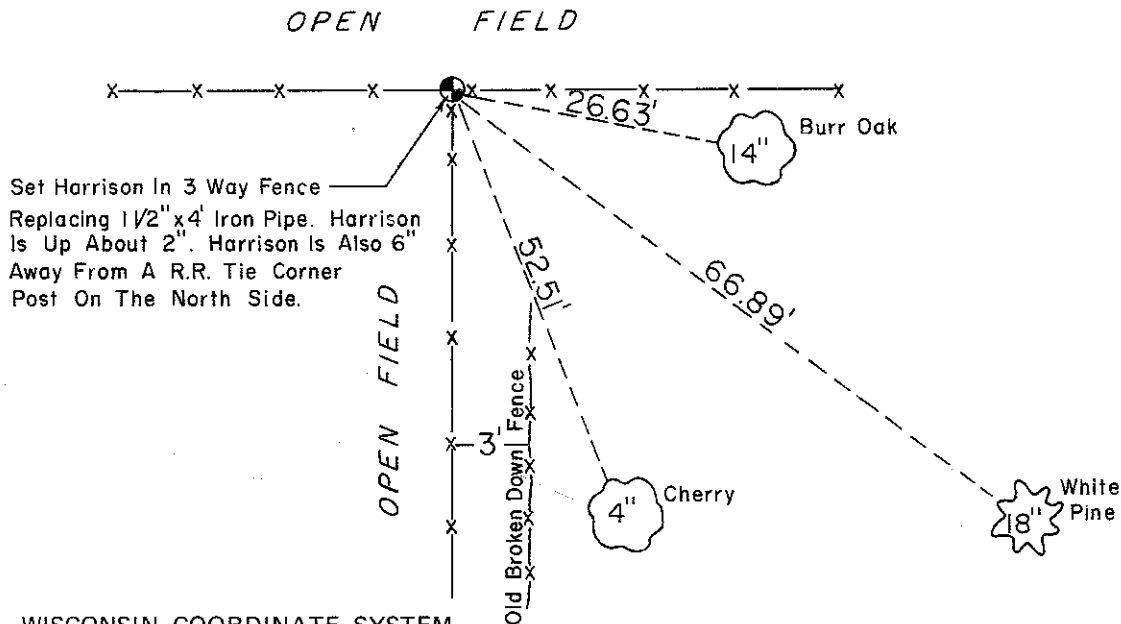
COUNTY SURVEYOR FORM NO. 1

Description of corner and witness monuments, references and accessories used to perpetuate the original or re-established location of this corner:

Witnesses to corner location:

- Bryan Meyer
- Todd Tormoen
- Chaz Dade

(All Trees Double Blazed)



Approved: **HARLEY A. SIME**
MONROE CO. SURVEYOR

SURVEY CONTROL ORDER

Horizontal	_____
Vertical	_____

WISCONSIN COORDINATE SYSTEM

Corner	East (X)	North (Y)	Elevation (Z)	Zone
Control Sta. Name				

~~City, Village or~~ Town of Little Falls
County of Monroe
Wisconsin