

21904230030

I, Garold A. Sime, do hereby certify that on the 6th day of June 1976, I found (evidence) (~~no evidence~~) of the N 1/16 NW 1/4 corner of Section 26, T 19 N, R 4 W. Fourth Principal Meridian, and I re-established said corner according to the Wisconsin Statutes as shown and described hereon.

Dated this 7th day of Feb. 1978.

Garold A. Sime, R.L.S. 1261

Crew Chief, County Surveyor's  
Title Office

History of original corner establishment:

Fred Holden set a well point here in April of 1910.

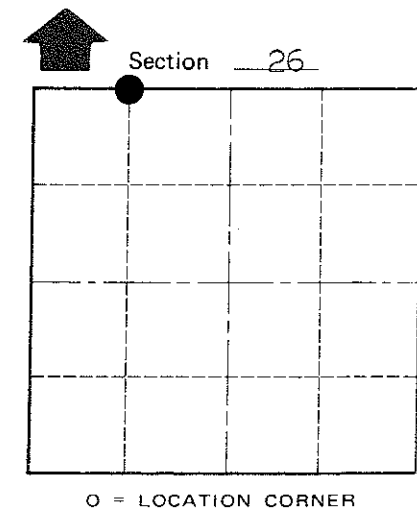
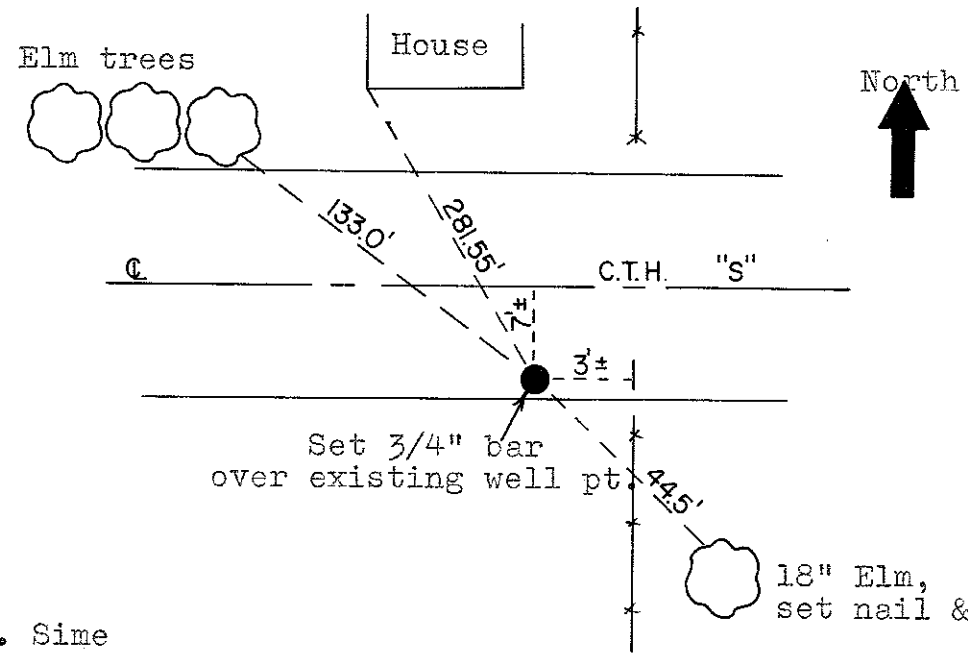
Description of corner evidence found:

Found Holden's well point. Set 3/4" iron bar over it.

Description of corner and witness monuments, references and accessories used to perpetuate the original or re-established location of this corner:

Witnesses to corner location:

- G. Sime
- D. Dade
- B. Meyer



Approved by: Harley A. Sime  
County Surveyor

SURVEY CONTROL ORDER

Horizontal	_____
Vertical	_____

WISCONSIN COORDINATE SYSTEM

Corner	East (X)	North (Y)	Elevation (Z)	Zone
Control Sta. Name				

City, Village or Town Little Falls

County of Monroe

COUNTY SURVEYOR FORM NO. 1