

21904230000

I, William C. Jung, do hereby certify that on the 15th day of May 19 79, I found (evidence) ~~(no evidence)~~ of the Northeast corner of Section 26, T 19 N, R 4 W Fourth Principal Meridian, and I re-established said corner according to the Wisconsin Statutes as shown and described hereon.

Dated this 3rd day of Feb. 19 81.

William C. Jung

William C. Jung, R.L.S. 1323

History of corner establishment since Original Government Survey

Harley Sime set an iron pipe at this corner in his survey of January, 1963. Duane Marten used this pipe in his survey of April, 1971. Garold Sime also used this pipe in his survey of August, 1976.

Description of corner evidence found:

Found Sime's pipe of record, removed it and replaced it with a Harrison marker.

Approved: ^{Title} **HARLEY A. SIME**

MONROE CO., SURVEYOR

Description of corner and witness monuments, references and accessories used to perpetuate the original or re-established location of this corner:

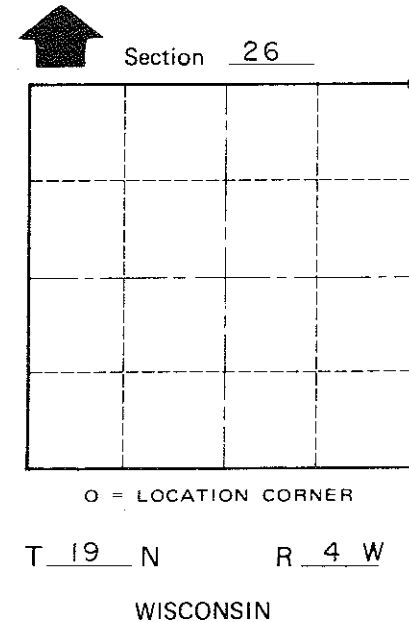
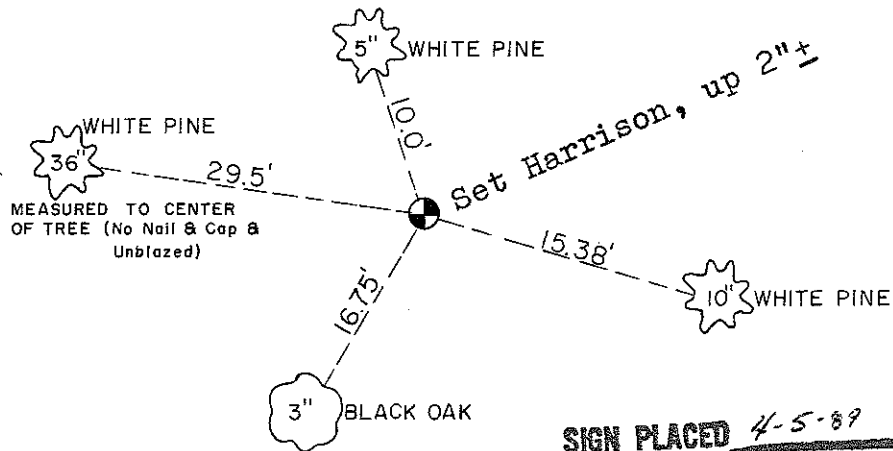
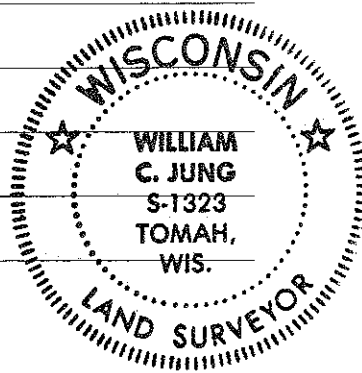
COUNTY SURVEYOR FORM NO. 1

NOTE: ALL TREES DOUBLE BLAZED WITH NAIL & CAP IN EACH

Witnesses to corner location:

Jung

Dechant



SURVEY CONTROL ORDER

Horizontal _____
Vertical _____

WISCONSIN COORDINATE SYSTEM

Corner	East (X)	North (Y)	Elevation (Z)	Zone
Control Sta. Name				

_____ or Town Little Falls
County of Monroe