

CERTIFICATE

CERTIFIED LAND CORNER

No. 78

2190422000

I, Bryan H. Meyer, do hereby certify that on the 30th day of October 1984, I found evidence: ~~XXXXXXXXXX~~ of the W¹/₄ corner of Section 23, T19 N, R 4 W Fourth Principal Meridian, and I re-established said corner according to the Wisconsin Statutes as shown and described hereon.

Dated this 27th day of Nov. 1984

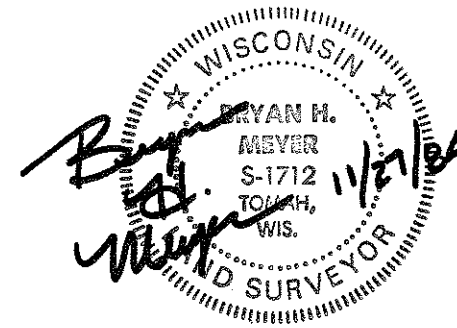
Bryan H. Meyer
Deputy County Surveyor
Title

History of corner establishment since Original Government Survey

Fred Holden was here in April of 1910 and set a stone. Mr. Holden visited this corner again in November of 1911.

Description of corner evidence found:

I found a 3"x10"x13" sandstone in an upright position. I believe this to be the stone set by Mr. Holden, I therefore accepted its location as the corner.

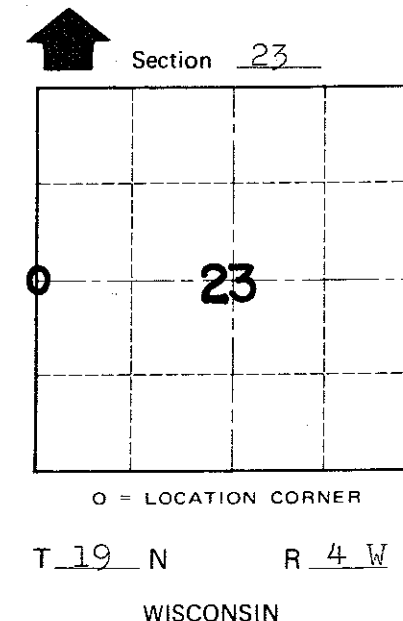
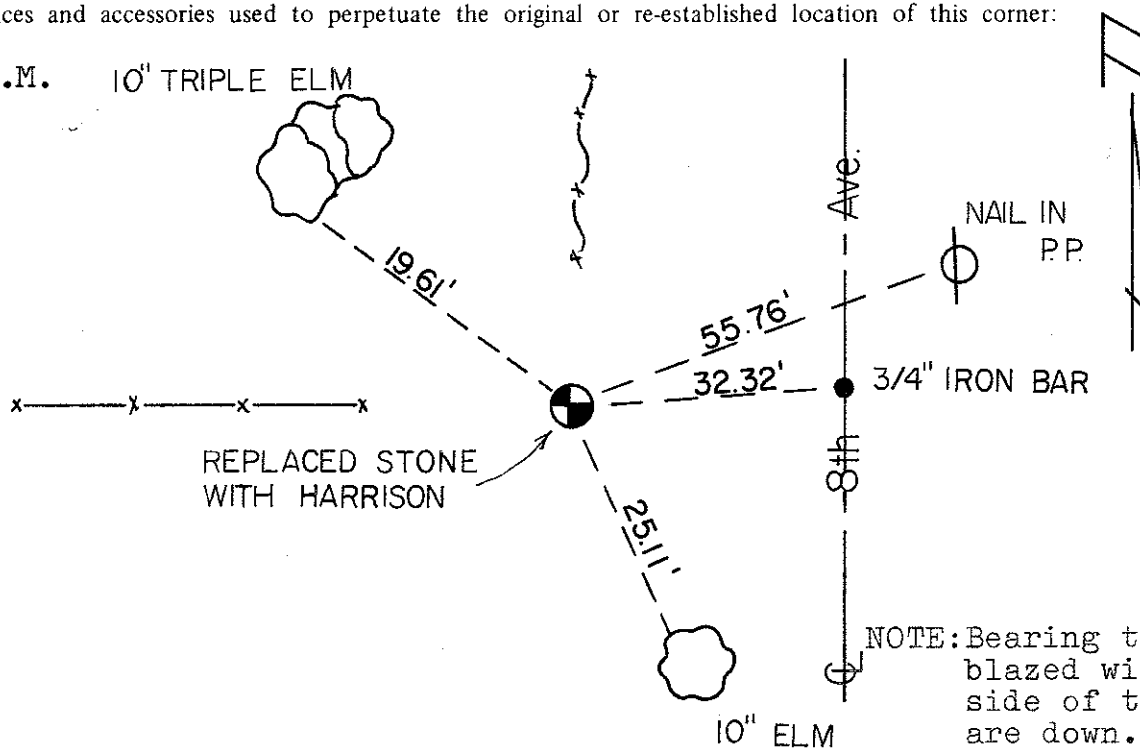


COUNTY SURVEYOR FORM NO. 1

Description of corner and witness monuments, references and accessories used to perpetuate the original or re-established location of this corner:

Crew: Meyer, Wilhite, Lund
Date: October 30, 1984 - 3:00 P.M.
Weather: Clear, Windy, 40°±
Witnesses to corner location:

Bryan Meyer
Dallas Wilhite
Jim Lund



NOTE: Bearing trees are double blazed with nail in hack in side of tree. The fences shown are down.

SURVEY CONTROL ORDER

Horizontal	_____
Vertical	_____

WISCONSIN COORDINATE SYSTEM

Corner	East (X)	North (Y)	Elevation (Z)	Zone
Control Sta. Name				

~~City/Village of~~ Town Little Falls
County of Monroe