

21904202000

I, Harley A. Sime, do hereby certify that on the 8 day of November 1975, I found ~~####~~ (no evidence) of the W 1/4 corner of Section 21, T19 N, R4 W, Fourth Principal Meridian, and I re-established said corner according to the Wisconsin Statutes as shown and described hereon.

Dated this 17th day of March 1977.

History of original corner establishment:
It appears that Blencoe was at this corner, but I could not find a marker.

Note: 2/7/78 Found stone to be on record at this point.

Description of corner evidence found:

Chained the distance along the West line of Section 21 and split it; then placed the corner so as to fit the old R/W fence to the East. This fit the overall section.

4/24/78 Feddersen dug for but could not find Keach's stone. He used the Harrison.

County Surveyor

Title

Approved: **HARLEY A. SIME**
MONROE CO. SURVEYOR

COUNTY SURVEYOR FORM NO. 1

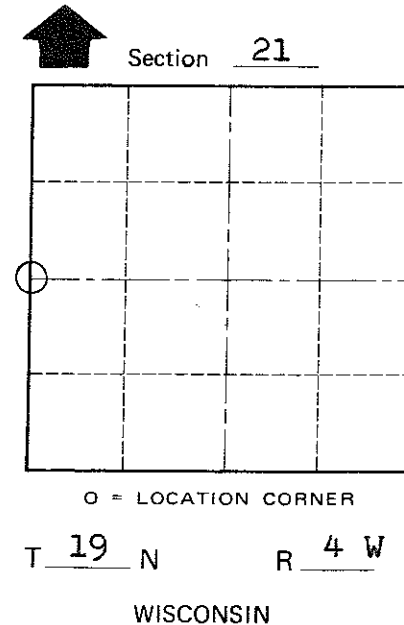
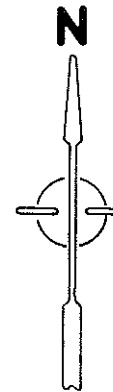
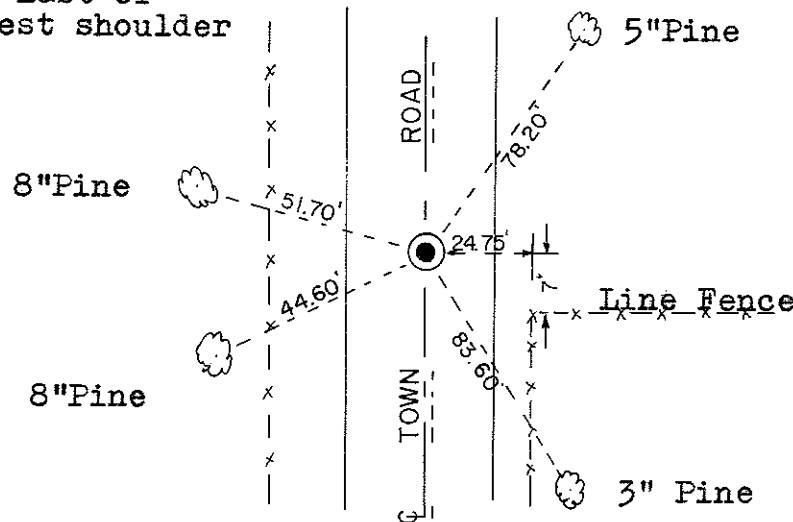
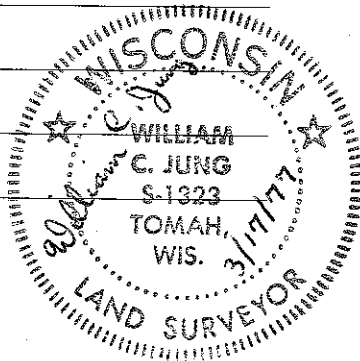
Description of corner and witness monuments, references and accessories used to perpetuate the original or re-established location of this corner:

Set Harrison Monument, Down 4", 29.5' East of Westerly R/W fence and 5'+ East of west shoulder of road.

Witnesses to corner location:

William C. Jung, Crew Chief

A. Lueck



All trees blazed and N&C's set.

SURVEY CONTROL ORDER

Horizontal	_____
Vertical	_____

WISCONSIN COORDINATE SYSTEM

Corner	East (X)	North (Y)	Elevation (Z)	Zone
Control Sta. Name				

~~####~~ or Town Little Falls
County of Monroe