

CERTIFICATE

CERTIFIED LAND CORNER

No. 116 B

21904332020

I, William C. Jung, do hereby certify that on the 12th day of April 1978, I found (~~evidence~~) (NO EVIDENCE) of the C/4 corner of Section 33, T 19 N, R 4 W. Fourth Principal Meridian, and I re-established said corner according to the Wisconsin Statutes as shown and described hereon.

History of original corner establishment:

No known recorded history since the original government survey.

Description of corner evidence found:

Set the corner by intersecting the 1/4 lines.

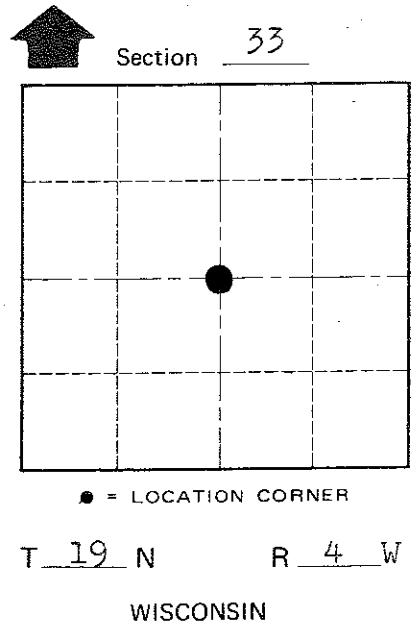
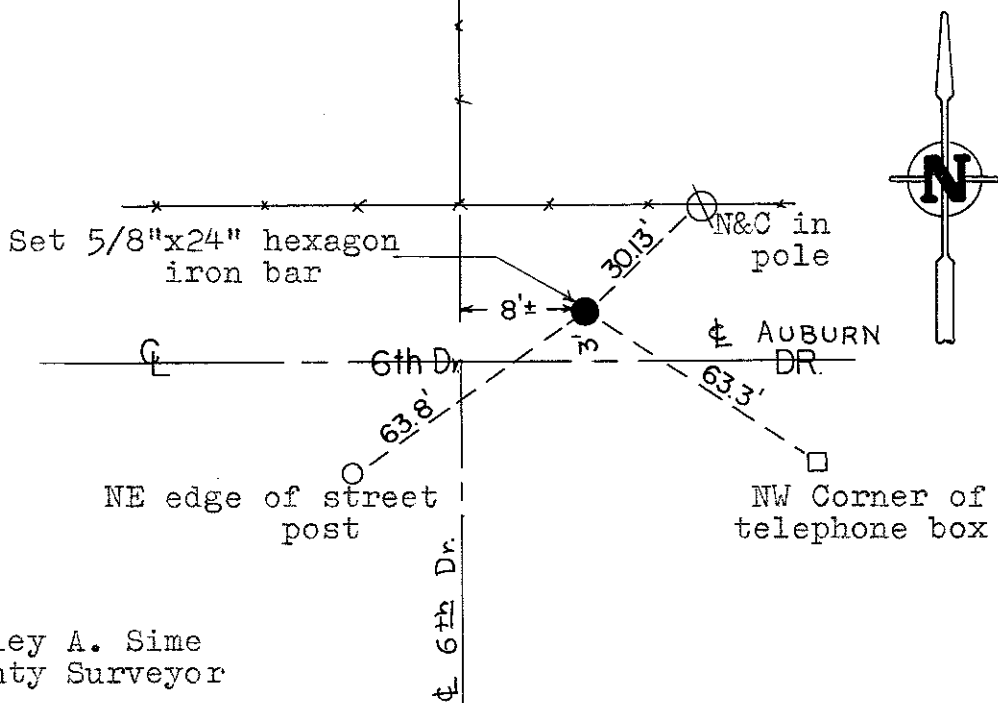
Dated this 21st day of Nov. 1978.

William C. Jung, R.L.S. 1323
Crew Chief, County Surveyor's
Title Office

Description of corner and witness monuments, references and accessories used to perpetuate the original or re-established location of this corner:

Witnesses to corner location:

W. Jung
G. Dechant



COUNTY SURVEYOR FORM NO. 1

SURVEY CONTROL ORDER

Horizontal	_____
Vertical	_____

Approved by: Harley A. Sime
County Surveyor

WISCONSIN COORDINATE SYSTEM

Corner	East (X)	North (Y)	Elevation (Z)	Zone
Control Sta. Name				

City, Village or Town Little Falls
County of Monroe