

CERTIFICATE

CERTIFIED LAND CORNER

No. 116

21904322000

I, William C. Jung, do hereby certify that on the 12th day of April 1978, I found (evidence) (no evidence) of the W 1/4 corner of Section 33, T 19 N, R 4 W, Fourth Principal Meridian, and I re-established said corner according to the Wisconsin Statutes as shown and described hereon.

History of original corner establishment:

No known recorded history since the original government survey.

Description of corner evidence found:

Accepted the occupied corner as best available evidence.

Dated this 21st day of Nov. 1978.

William C. Jung, R.L.S. 1323

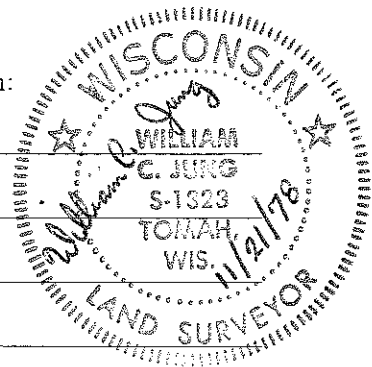
Crew Chief, County Surveyor's Title Office

Description of corner and witness monuments, references and accessories used to perpetuate the original or re-established location of this corner:

Witnesses to corner location:

W. Jung

G. Dechant



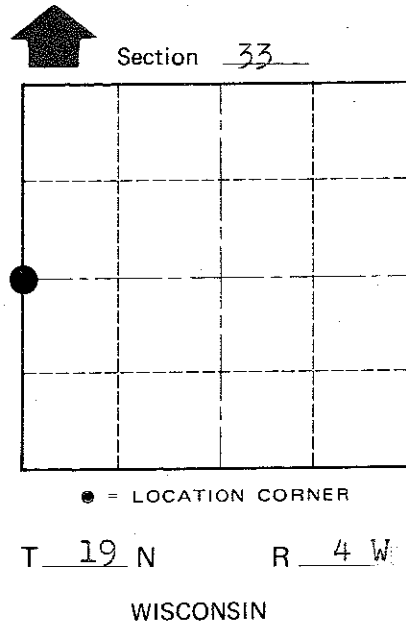
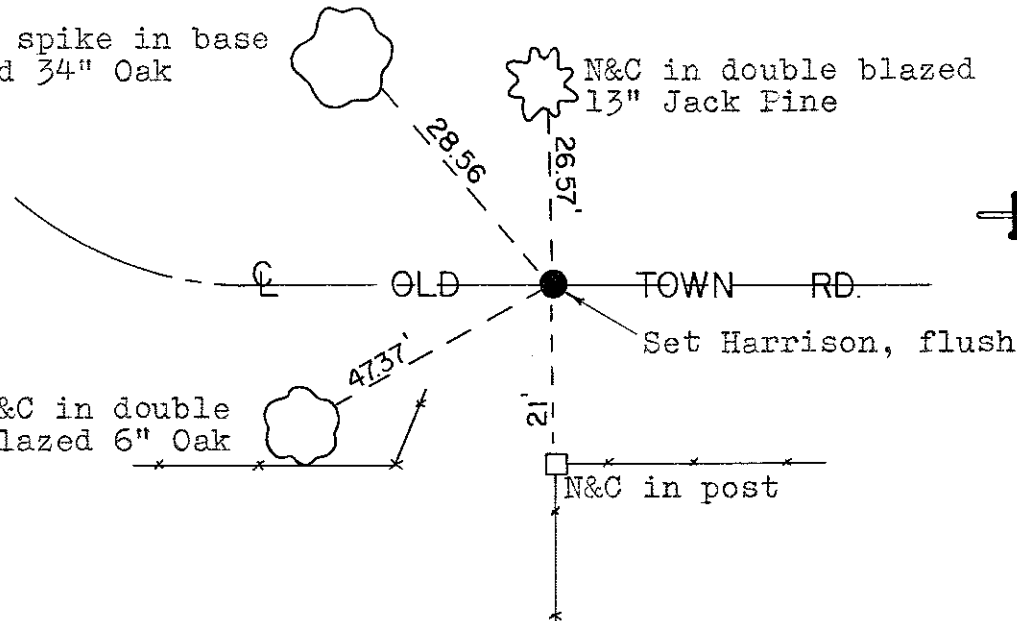
Approved by: Harley A. Sime, County Surveyor

R. R. spike in base of old 34" Oak

N&C in double blazed 13" Jack Pine

N&C in double blazed 6" Oak

N&C in post



COUNTY SURVEYOR FORM NO. 1

SURVEY CONTROL ORDER

Table with 2 rows: Horizontal, Vertical

WISCONSIN COORDINATE SYSTEM

Table with 5 columns: Corner, East (X), North (Y), Elevation (Z), Zone

City, Village or Town Little Falls, County of Monroe