

CERTIFICATE

CERTIFIED LAND CORNER

No. 130

21904320020

I, William C. Jung, do hereby certify that on the First day of November 19 79, I found (evidence) ~~(no evidence)~~ of the South 1/4 corner of Section 32, T 19 N, R 4 W, Fourth Principal Meridian, and I re-established said corner according to the Wisconsin Statutes as shown and described hereon.

Dated this 3rd day of Feb. 19 81.

William C. Jung

William C. Jung, R.L.S. 1323

Title

Approved: **HARLEY A. SIME**

MONROE CO. SURVEYOR

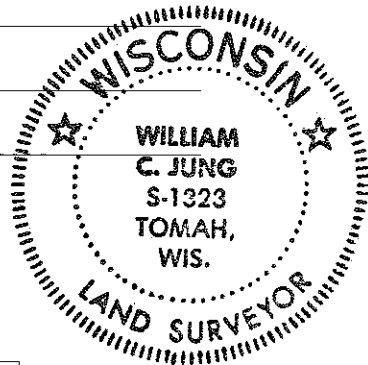
Description of corner and witness monuments, references and accessories used to perpetuate the original or re-established location of this corner:

NOTE: ALL TREES DOUBLE BLAZED WITH NAIL & CAPS SET

Witnesses to corner location:

Jung

Pietz



SURVEY CONTROL ORDER

Horizontal	_____
Vertical	_____

WISCONSIN COORDINATE SYSTEM

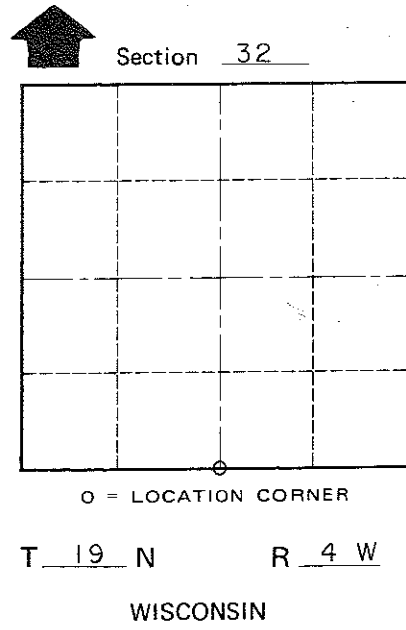
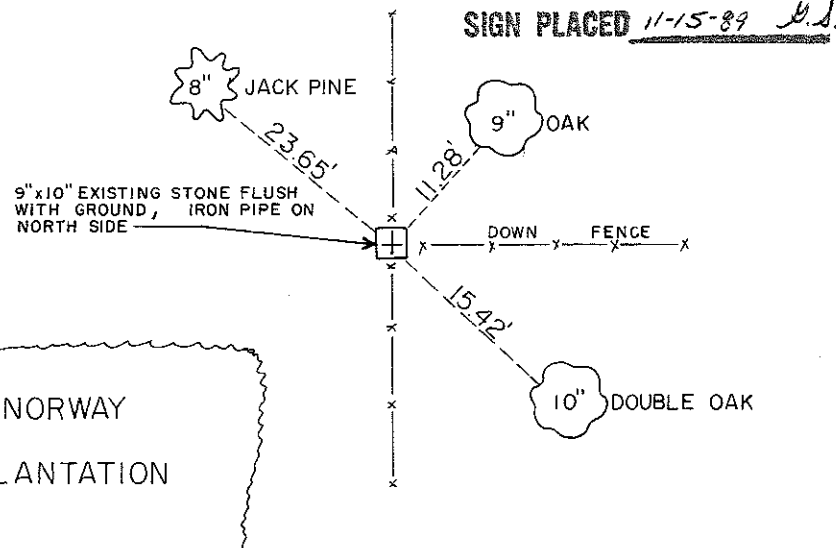
Corner	East (X)	North (Y)	Elevation (Z)	Zone
Control Sta. Name				

History of original corner establishment:

Holden was at this corner in April of 1906 and set a stone. Ray Hurlburt found this stone in December of 1967. Duane Marten used this stone in his survey of September, 1973, as did Garold Sime in March of 1978.

Description of corner evidence found:

Found the stone of record.



or Town Little Falls

County of Monroe

COUNTY SURVEYOR FORM NO. 1